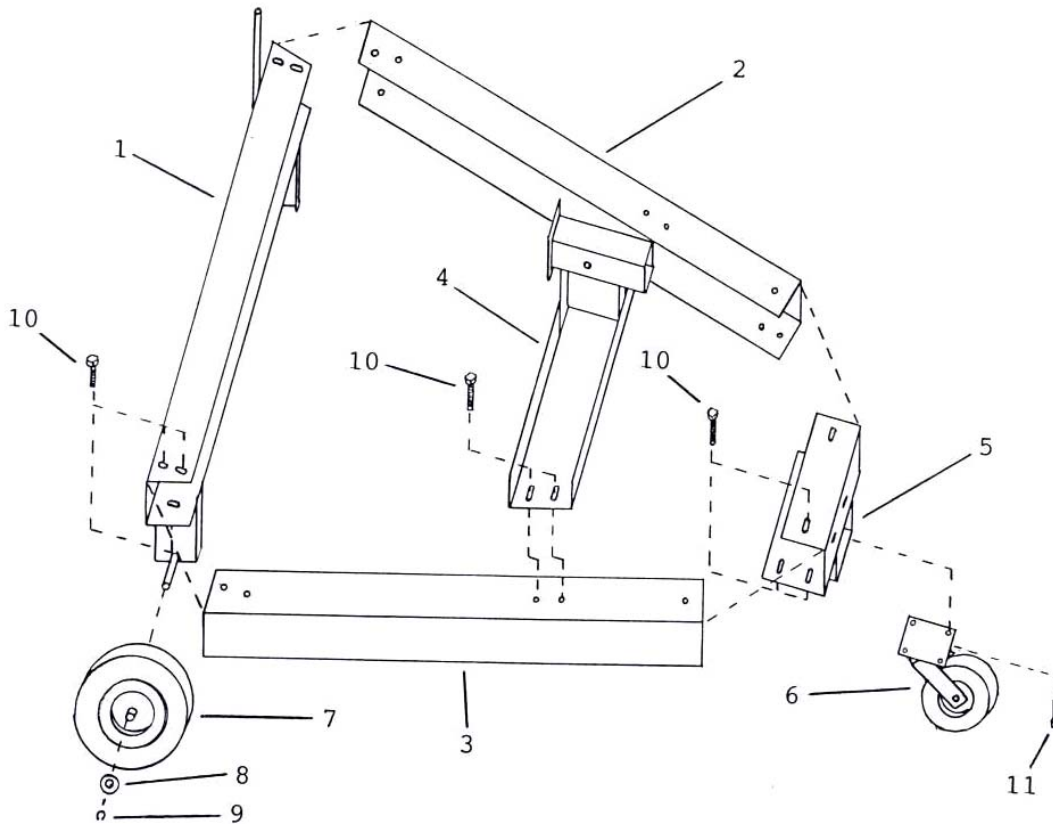


HM STAND
GIANT VAC SWING-AWAY HITCH-MOUNT STAND



GIANT-VAC MODEL DSHM Hitch Mount Display Stand

| REF NO. | PART NO. | DESCRIPTION | QTY |
|---------|----------|--|-----|
| 1 | 27284 | Rear member/axle | 1 |
| 2 | 27285 | Left side member | 1 |
| 3 | 27286 | Right side member | 1 |
| 4 | 27287 | Center receiving bracket | 1 |
| 5 | 27288 | Front member/caster mounting bracket | 1 |
| 6 | 33190 | Front swivel caster assembly | 1 |
| 7 | 33172 | 4.10-350 x 6 wheel | 2 |
| 8 | 31001 | 5/8 flatwasher | 2 |
| 9 | 31000 | 5/8 snap ring | 2 |
| 10 | 31687 | 3/8-16 x 1-1/4" bolt, flatwasher, lockwasher & nut | 16 |
| 11 | 31373 | 3/8-16 x 1" bolt, flatwasher, lockwasher & nut | 4 |
| -- | 31333 | 1/2-13 x 3 hex bolt (unit securing pin bolt) | 1 |
| -- | 31406 | 1/2-13 lock nut | 1 |
| -- | 70991 | HM Stand - complete | |

ALL SPECIFICATIONS SUBJECT TO CHANGE WITHOUT NOTICE