
THE GIANT-VAC

'690' VAC

MODEL 690

OPERATOR'S MANUAL

Congratulations!

You have just purchased one of the finest pieces of outdoor power equipment on the market today. If properly cared for, your Giant-Vac 690 Vac will provide years of dependable service. Please read and follow this instruction manual carefully in order to get the most out of your new equipment.

As you unpack your Giant-Vac power unit, you will find the following parts:

- 1 – Power unit with motor, impeller and wheels
- 1 – Set of handles in three parts
- 1 – Handle brace
- 1 – Package containing hardware and various assembly components
- 1 – Package containing manuals and warranty registration

Your Giant-Vac 690 Vac requires very little assembly. Simply follow the instructions contained within this manual to begin enjoying the benefits of your new unit.

Each Giant-Vac product leaves our factory in excellent condition; occasionally, however, some damage may occur during shipment. If any such damage is found upon initial inspection, *immediately* notify the transport carrier who delivered your machine, as they are solely responsible for such damage, as well as any subsequent adjustments necessary.

CALIFORNIA PROPOSITION 65 WARNING

Gasoline and Diesel engine exhaust and some of its constituents are known to the State of California to cause cancer, birth defects and other reproductive harm.

As an owner of off-road gasoline or diesel engine equipment and/or as an employer, you also may have an obligation under the California Occupational Safety and Health Act or under Proposition 65 to warn persons exposed to gas and diesel engine exhaust and/or other Proposition 65 chemicals in and around your workplace. See California Health and Safety Code section 25249.5, Title 22 of the California Code of Regulations at Section 1200 *et seq.*, and Title 8 of the California Code of Regulations Section 5194.

10/01 Revision

1

SAFETY RULES REGARDING OUTDOOR POWER EQUIPMENT

***IMPORTANT!* READ THE FOLLOWING SAFETY RULES CAREFULLY BEFORE ASSEMBLING OR OPERATING UNIT:**

- Regard your Giant-Vac as a piece of power equipment and teach this regard to all who will operate this unit. Never allow children or young teenagers to operate the unit.
- Always wear appropriate safety equipment when operating this unit. Proper eye, ear, and breathing protection is a must.
- Be sure you know how to stop both the unit and the engine at a **MOMENT'S NOTICE**. Refer to the operation section of this manual, as well as the engine manual.
- Do not operate with any guards or component parts removed from unit.
- Unless there is very good artificial light, use only during daylight.
- Fill gasoline driven machines outdoors. Avoid spilling gasoline and **DO NOT** fill the engine while it is running or while you are smoking.
- While in operation, keep all parts of body away from intake and exhaust sections. Never insert any body part or other foreign object in any opening while the machine is running.
- When operating unit, keep people and pets a safe distance away. Instruct children to keep away from the area of operation at all times.
- Do not use on steep inclines (over 30 degrees), as unit can roll over.
- Before making any adjustments or repairs, stop engine and remove spark plug wire.

FAILURE TO FOLLOW THESE RULES CAN RESULT IN CHRONIC HEALTH PROBLEMS, SERIOUS INJURY, OR EVEN DEATH.

2

UNIT ASSEMBLY

Note: Please refer to Parts List for correct part identification and placement

HANDLE ASSEMBLY

- Slide swaged top of each lower handle (#9,9a) into bottom portion of upper handle (#9), aligning holes in lower handles with corresponding holes in upper handle. Note: Lower handles should angle inwards at the bottom.
- Slide one 5/16 x 1-1/2" round slotted head screw (#32) out from the inside through each set of holes.
- Slip holes in forked end of handle brace (#11) over screw ends, securing with one 5/16 lockwasher and acorn nut (#32). Note: be sure front end of handle brace is angled downward.
- Lower handle assembly onto unit, slipping front hole in handle brace onto threaded stud on top of blower housing (#1), and aligning holes in bottom of lower handles with corresponding holes in engine base. Secure brace with one 3/8 nut and lockwasher (#25), secure lowers with four 5/16 x 1-3/4 hex bolts, lockwashers and nuts (#31). Tighten all bolts securely.
- Fasten throttle control (#13) to left outside of upper handle with two 10-24 x 1 1/4" bolts, lock washers and nuts (#33). Secure cable with two throttle clips (#13a), placing one approximately two inches below the brace, the second just below the curve in the upper handle. Be sure there is a generous loop between the engine and the bottom clip to avoid binding.

NOSE CONE ASSEMBLY

HV/S100 NOSE CONE

- Fasten nose cone (#2) to front of unit by slipping bottom of bolt ring into clips on front of housing, making sure to align holes in nose cone with holes in housing. Secure with three 3/8" thumb screws (#54) and lockwashers (#25a).

FT NOSE CONE (See Sheet #1A)

- Remove acorn nut from right side of handle assembly, replacing with u-clip with nut (#6). Make sure u-clip faces upwards as in diagram. Slip bottom end of upper lever (#5) down through clip. Teeth should face downward. Align holes in top of lower lever (#4) with holes in bottom of upper lever, securing with two 5/16 x 3/4" hex bolts (#12), lockwashers (#13) and nuts (#15). Connect bottom of lever to handle on nose cone door (#2) with one 5/16 x 3/4" hex bolt (#13a) and lock nut (#13). Adjust lever, via adjustment holes at junction between upper and lower levers, so that door closes completely when lever is lowered and opens flush with bottom of nose cone when raised.

2

UNIT ASSEMBLY (cont.)

DISCHARGE ELBOW ASSEMBLY

- Fasten discharge elbow (#7) to top of unit by aligning holes in elbow bolt ring with holes in housing discharge and rubber gasket (#12), making sure discharge is directed toward back of unit.
- Slip one 5/16 x 1" hex bolt (28) up through each of the four sets of holes, securing with one lockwasher and wing nut (#28).

DEBRIS BAG ATTACHMENT

- Slide mouth of debris bag over discharge elbow, making sure tensioning strap clears anti-slip ridge of discharge elbow. Pull strap taut. Note: make sure bag is right-side up – observe lettering on bag.
- Secure rear of bag to upper handle with clip-on hanger straps.

Assembly of your Giant-Vac 690 Vac is now complete. Please refer to the operations section of this manual in order to get the safest and most effective use from your unit.

3

UNIT OPERATION

STARTING THE ENGINE

IMPORTANT NOTE: The procedures outlined within this section are general guidelines, and are in no way meant to replace or supercede engine manufacturer's operating instructions. In order to obtain optimum performance from your engine, refer to your engine manual.

BEFORE STARTING ENGINE:

- Be sure that the unit is completely assembled, all fasteners are tightened securely, and all safety guards and components are in place.
- Be sure to check engine's **oil** and **gasoline***. (See engine manual for recommended oil and gasoline specifications.) **Never** check the engine while it is running or while you are smoking. Check only when engine is cold.

** All machines are shipped without oil or gasoline unless otherwise noted.*

- Be sure that fuel valve on engine is set to open position (if applicable).

TO START ENGINE :

- Set throttle control to "ON" position. If engine is cold, set choke (if so equipped). If your engine has a fuel prime button, depress it firmly three times.

Recoil Start:

- Grasp recoil handle and pull briskly. You may have to pull several times before engine starts. (If engine fails to start within a reasonable amount of time, discontinue and check engine manual for further instructions.) Note: Do not allow recoil rope to snap back into recoil; damage to the rope or recoil could result.

Electric Start:

- Turn ignition key past 'on' to 'start'. When started, release key. If engine fails to start within a reasonable amount of time, discontinue and check engine manual for further instructions.
- After engine starts, move throttle control down to approximately half, and turn off choke.

TO SHUT ENGINE DOWN :

- Allow engine to idle for 2-3 minutes before shutting down.
- Set throttle control to 'off' position.
- If engine is not to be started for a prolonged period, turn fuel valve to closed position.

IMPORTANT NOTE: If you experience problems with your engine that cannot be satisfactorily resolved by following the instructions contained within the engine manual, contact your local engine dealer, or call the toll-free service number listed in the repair section of the engine manual. All engine service, warranty or otherwise, is required to be performed by a manufacturer-authorized service center. Giant-Vac, Inc. is neither authorized nor responsible for any type of warranty engine service, nor is it equipped to perform any such service.

3

UNIT OPERATION

GENERAL RULES TO OBSERVE BEFORE AND DURING OPERATION

- Inspect your unit before each and every use. Check for ripped or worn bag, bent wheels, loose fasteners, and repair or replace prior to operation. **DO NOT OPERATE A DEFECTIVE UNIT – SERIOUS INJURY OR DEATH CAN RESULT.**
- Clear the entire work area of all debris that could cause damage to or become entangled in the unit. Rocks and large branches can wedge themselves between the impeller and housing, causing engine seizure, impeller damage, or personal injury. If in doubt, remove it.
- Do not start unit until you are ready to begin debris removal, and promptly shut off unit as soon as operation is complete.
- Set unit initially at approximately half throttle to begin debris removal. Increase as needed. For wet or frozen debris, increase throttle to full.
- Use proper discretion in selecting your debris removal pattern, especially on uneven terrain. Avoid steep hills, especially if surface is wet. Do not travel straight down slopes exceeding 14 degrees. If tires begin to slip when climbing a slope, the grade is too steep for safe operation. Angle the unit to a less steep slope until tires stop slipping and traction is regained.
- Be keenly aware of your surroundings while operating unit – children and pets can pop out of nowhere.
- Learn to listen to your machine – being aware of what a well-running unit sounds like can alert you to a potential problem. A straining engine, a clanging impeller means that trouble is almost sure to follow.

ADJUSTING THE NOSE CONE

- The height of the nose cone is adjusted by loosening the thumb nuts securing the two threaded caster wheel studs, raising or lowering the caster wheels, then tightening the thumb nut after the desired height has been attained. In general, if your Giant-Vac is being used on an even surface, a 5/8 inch clearance for the nose cone is desirable.
- The brush at the back of the nose cone is easily raised or lowered by loosening two bolts and sliding the brush and brush holder by means of the adjustable slots provided. The height of the brush depends upon the particular application. In essence, the brush should be touching the surface.

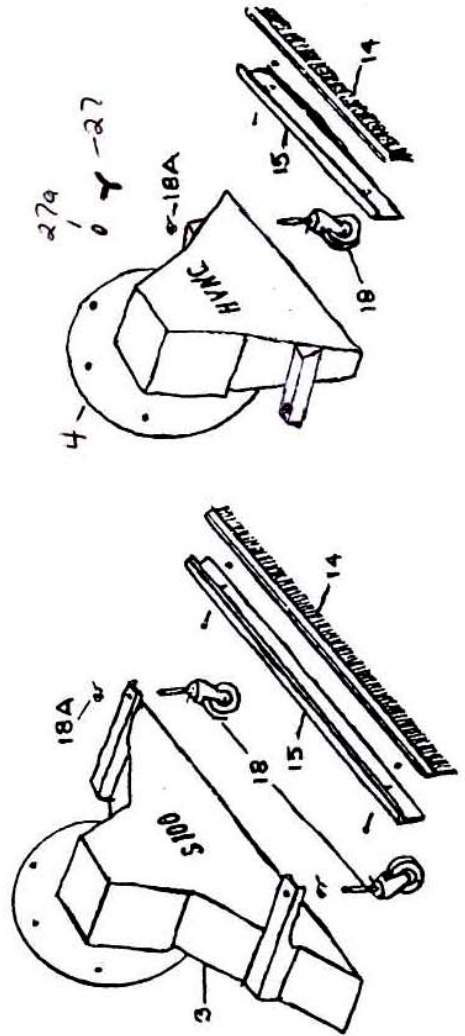
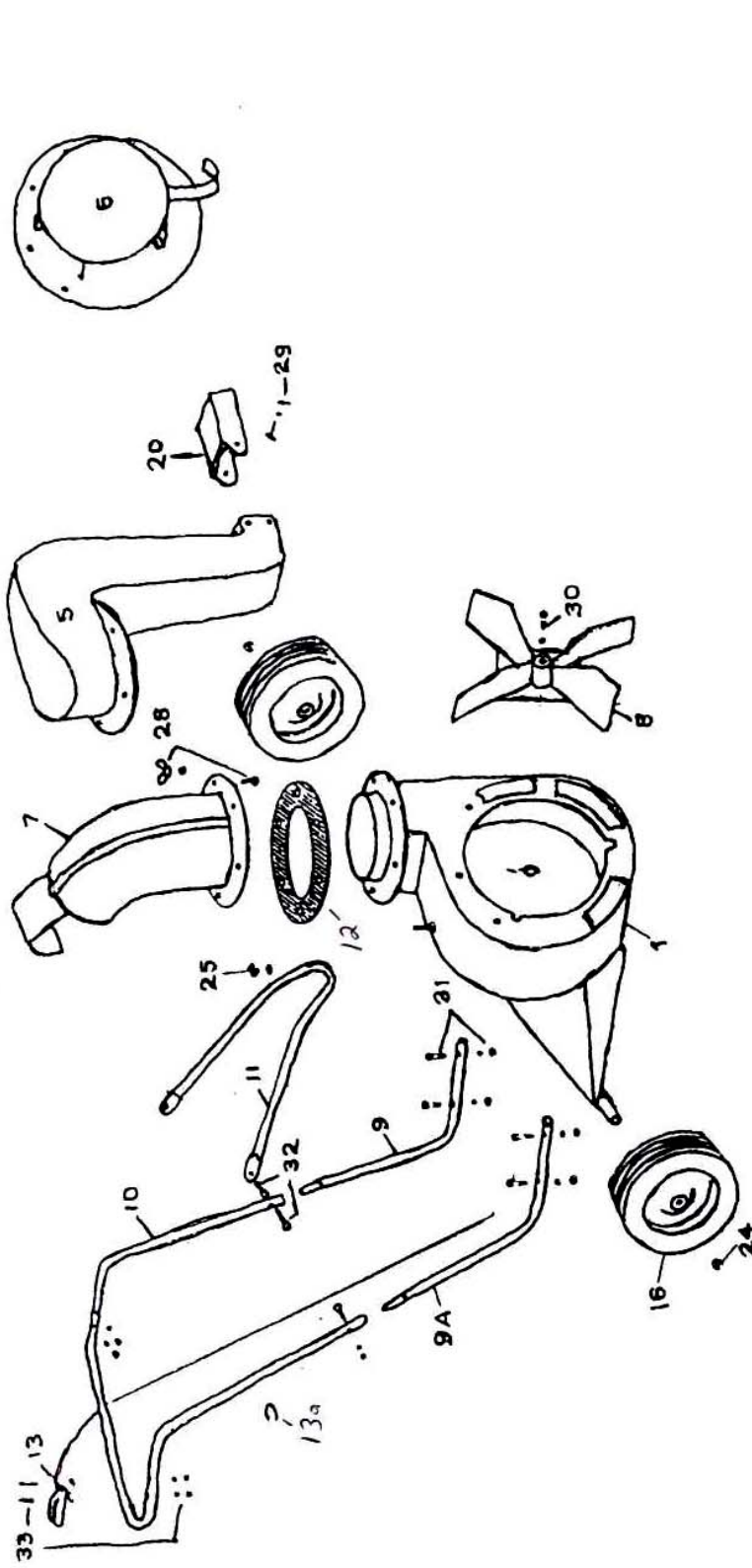
EMPTYING THE DEBRIS BAG

- Ideally the bag should be emptied daily; however, a weekly emptying will suffice.

4

MAINTENANCE AND STORAGE

- Follow **implicitly** the engine manufacturer's recommendations for maintenance.
 - The debris bag must be kept clean for efficient operation of your Giant-Vac. Periodic cleaning will promote maximum efficiency. One way is to leave the zipper open and run the engine for a few minutes while shaking the bag vigorously. Turning the bag inside out and sweeping briskly with a stiff broom is sometimes desirable.
 - Never make any adjustments to the unit until the engine is **off** and the spark plug wire is disconnected.
 - If carburetor adjustment is necessary, stand to one side and **keep feet and hands** in the clear while making adjustments.
 - Keep engine free of accumulations of grass, leaves or excessive grease. An accumulation of these combustible materials may result in a fire.
 - Store gasoline in a **safe and approved** container in a cool, dry place.
 - Keep the unit and any fuel containers in locked storage to prevent children from playing and/or tampering with them.
 - Do not store gasoline powered equipment or fuel containers in a basement or any closed area where heating or heat appliances or open pilot lights are present, unless the fuel is completely drained from the power equipment and the fuel containers.
-
-



PARTS NOS. 5708

PARTS LIST NO. 5802

<u>REF NO</u>	<u>PART NO</u>	<u>DESCRIPTION</u>	<u>690</u>
1	10234	Blower housing & engine base	1
3	27015	S100 nose cone body	1
4	27017	30HV nose cone body	1
5	24512	Blower air chute	1
6	20102	Intake baffle	1
7	24510	Exhaust elbow	1
8	21558	Impeller (complete with Taper-Lok hub & hardware)	1
8a	21559	Taper-Lok hub – 1-1/8"	1
8b	31003	5/16 lock washer	3
8c	31646	5/16-18 x 1-1/4" Gr 5 hex bolt	3
9	23013	Lower handle left	1
9a	23010	Lower handle right	1
10	23009	Upper handle	1
10a	31590	Foam handle cover	1
11	23011	Handle brace	1
12	31105	Rubber gasket	1
13	35002	Throttle control	1
14	27011	36" brush - S100	1
14	27010	30" brush - 30HV	1
15	27019	36" brush holder -S100	1
15	27020	30" brush holder -30HV	1
15a	31646	5/16-18 x 1-1/4" hex bolt	2
15b	31027	5/16 flat washer	2
15c	31003	5/16 lock washer	2
15d	31004	5/16-18 hex nut	2
18	33014	4" caster assembly	2
18a	31038	3/4" wing nut	2
20	24513	Blower chute deflector	1
24	31000	5/8" snap ring	2
24a	31001	5/8" flat washer	2
25	31058	3/8" lock washer and nut	1
27	31026	3/8" T-bolt	3
27a	31008	3/8 lock washer	3
28	31282	5/16 x 1" hex bolt	4
28a	31003	5/16 lock washer	4
28b	31592	5/16-18 wing nut	4
29	31055	1/4 x 5/8" bolt, lock washer and nut	2
31	31057	5/16 x 1-3/4" bolt, lock washer and nut	4
32	31056	5/16 x 1-1/2" round slotted head bolt	2
32a	31003	5/16 lock washer	2
32b	31028	5/16 acorn nut	2
33	31010	10-24 x 1-1/2" bolt, lock washer and nut	2
34	20111	Intake flange 4"	1
34	20112	Intake flange 5"	1
34	20113	Intake flange 6"	1
34	20115	Intake flange 8"	1
35	20145	Intake nozzle 4"	1

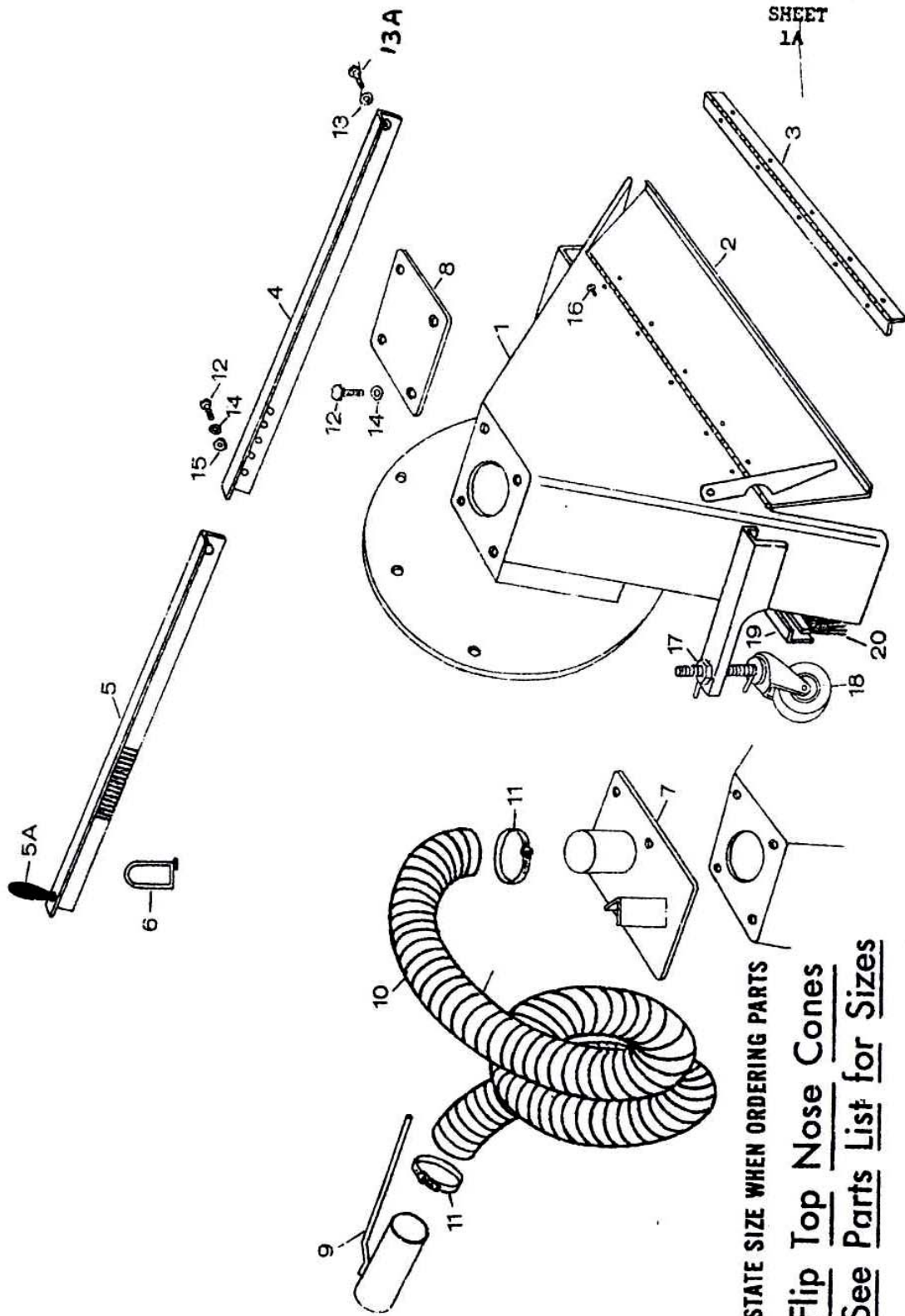
PARTS LIST NO. 5802

<u>REF</u>	<u>PART</u>	<u>DESCRIPTION</u>	<u>690</u>
35	20146	Intake nozzle 5"	1
35	20147	Intake nozzle 6"	1
35	20149	Intake nozzle 8"	1
36	24511	Exhaust flange 7"	1
40	34002	Intake hose 4" x 10'	1
40	34003	Intake hose 5" x 10'	1
40	34004	Intake hose 6" x 10'	1
40	34006	Intake hose 8" x 10'	1
41	34018	Exhaust hose 7" x 10' metal	1
42	34011	Hose clamp 4"	2
42	34012	Hose clamp 5"	2
42	34013	Hose clamp 6"	2
42	34015	Hose clamp 8"	2
42	34047	Squeeze ring 7"	1

ITEMS NOT SHOWN

39094	9 HP B&S Intek engine	1
31002	5/16-18 x 1-3/4" hex bolt (engine mounting bolts)	4
31027	5/16 flat washer	1
31003	5/16 lock washer	4
31004	5/16-18 hex nut	4
210	Dust control bag	1
510	Liner bag	1
710	Polypropylene bag	1

SPECIFICATIONS SUBJECT TO CHANGE WITHOUT NOTICE



STATE SIZE WHEN ORDERING PARTS
Flip Top Nose Cones
See Parts List for Sizes

PARTS LIST NO. 5716

<u>REF NO.</u>	<u>PART NO.</u>	<u>DESCRIPTION</u>	<u>FT30</u>	<u>FT36</u>
1	27039	FT30 nose cone body	1	--
1	27040	FT36 nose cone body	--	1
2	27041	Door FT30	1	--
2	27042	Door FT36	--	1
3	27043	Hinge FT30	1	--
3	27044	Hinge FT36	--	1
4	23022	Lower adjuster bar	1	1
5	23023	Upper adjuster bar	1	1
5a	31283	Handle Grip – 1" x 4"	1	1
6	31101	U-clip – w/5/16-18 nut	1	1
7	20137	Intake flange and holder 4"	1	1
7	20138	Intake flange and holder 5"	1	1
8	27045	Cover plate	1	1
9	20145	Intake nozzle 4"	1	1
9	20146	Intake nozzle 5"	1	1
10	34002	Intake hose 4"	1	1
10	34003	Intake hose 5"	1	1
11	34011	Hose clamp 4"	2	2
11	34012	Hose clamp 5"	2	2
12	31031	5/16 x 3/4" hex bolt	3	3
13	31436	5/16" lock nut	1	1
13a	31016	5/16 x 5/8" hex bolt	4	4
14	31003	5/16" lock washer	6	6
15	31004	5/16" hex nut	2	2
16	31100	3/16" rivets	12	16
17	31038	3/4" wing nut	2	2
18	33014	4" caster wheel	2	2
19	27020	30" brush holder	1	--
19	27019	36" brush holder	--	1
19a	31646	5/16-18 x 1-1/4" hex bolt	2	2
19b	31027	5/16 flat washer	2	2
19c	31003	5/16 lock washer	2	2
19d	31004	5/16-18 hex nut	2	2
20	27010	30" brush	1	--
20	27011	36" brush	--	1

SPECIFICATIONS SUBJECT TO CHANGE WITHOUT NOTICE

GIANT-VAC WARRANTY

GIANT-VAC, INC., here-in-after called Giant-Vac, warrants each new Giant-Vac to the original retail purchaser of the new Giant-Vac equipment to be free from manufacturing defects in normal service for a period of 1 year, unless it is used for rental purposes, which limits the warranty to 30 days. This warranty does not apply to engines, tires or other parts that are purchased and warranted by their manufacturer. Items such as bags, grass catchers, hoses and blades are not warranted, as these are considered expendable items. This warranty does not include equipment failures due to normal wear.

Any obligation under this warranty is expressly limited to the replacement or repair, at an authorized servicing Giant-Vac dealer, or at a point designated by us, of such parts as appear to us to have been defective. All defective parts have to be returned freight prepaid before credit will be issued.

We shall not be liable for transportation charges in connection with the replacement or repair of defective parts.

This warranty does not apply to a Giant-Vac upon which repairs or alterations have been made by others except with our prior written approval.

We shall not be liable for consequential damages or contingent liabilities for the fitness of any Giant-Vac for any particular purpose.

We make no other express, implied or statutory warranty, nor is anyone authorized to make any in our behalf.

**GIANT-VAC, INC.
P.O. BOX 195
SOUTH WINDHAM, CT. 06266
PHONE: 860-423-7741 • FAX: 860-423-2654**
