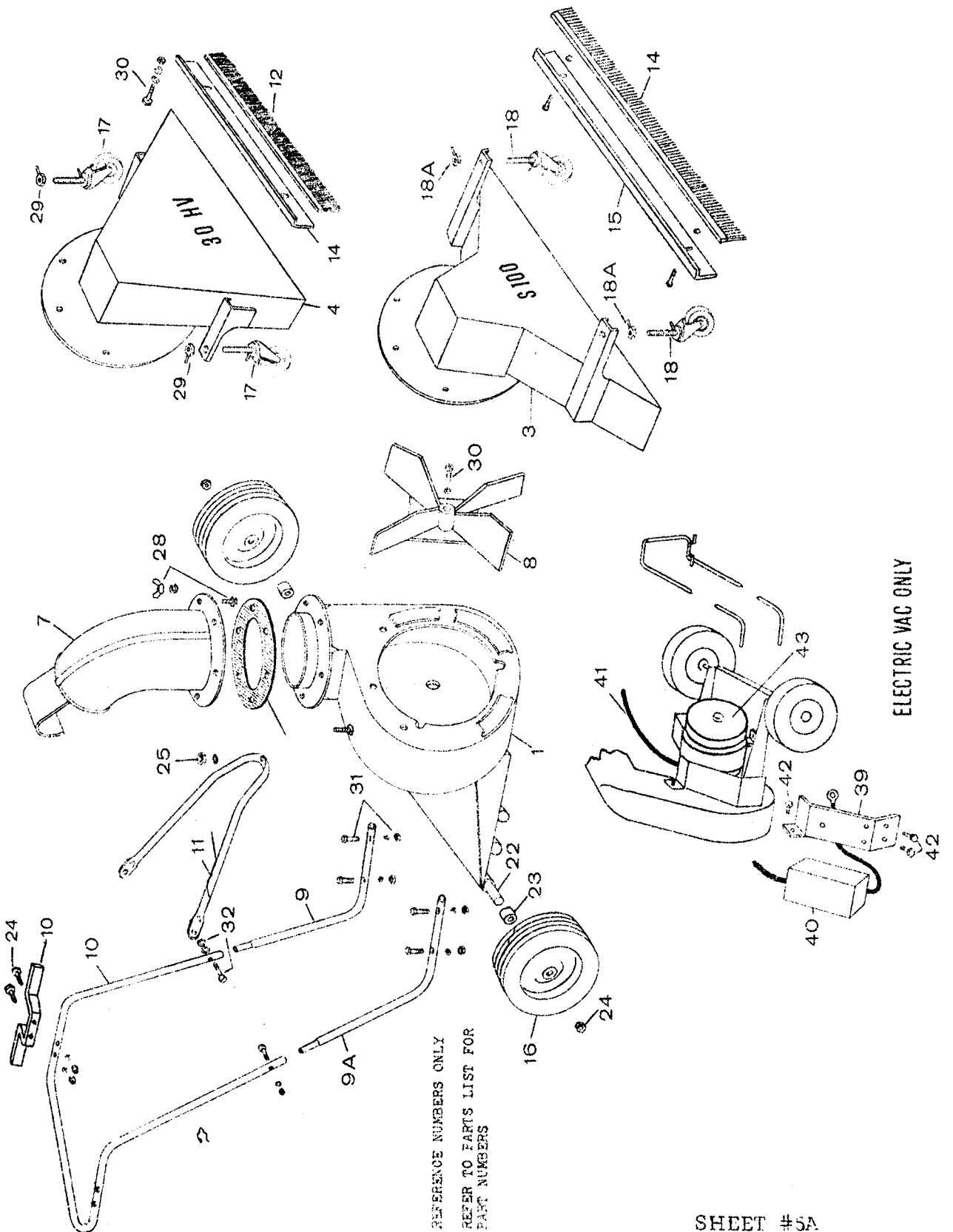


REF. NO.	PARTS NO.	DESCRIPTION	ELECTRIC MODELS		
			150	300	500
1	10013	Blower and Engine Base	1		
1	10014	Blower and Engine Base		1	
1	10015	Blower and Engine Base			1
3	27015	S100 - Super 36" Nose Cone less castors and brush	1	1	1
4	27017	30HV - 30" High Velocity Nose Cone less castors & brush	1	1	1
7	24510	Exhaust Elbow	1	1	1
8	21509	Impeller	1	1	1
8	21510	Impeller		1	
8	21511	Impeller			1
9	23013	Lower Handle Left	1	1	1
9A	23010	Lower Handle Right	1	1	1
10	23009	Upper Handle	1	1	1
10A	37007	Cord Bracket	1	1	1
11	23011	Handle Brace	1	1	1
12	27010	30HV Nose Cone Brush	1	1	1
14	27011	S100 Nose Cone Brush	1	1	1
14	27020	30HV Nose Cone Brush Holder	1	1	1
15	27019	S100 Nose Cone Brush Holder	1	1	1
16	33000	Wheel 10 x 2.50 Semi Pneu.	2	2	2
16	33001	Wheel 410 x 3.50 - 4 Pneu. (optional)	2	2	2
17	33014	Caster Wheel Assembly S100 and 30HV	2	2	2
24	31059	1 1/2" x 1/4" Bolts w/Nuts & Washers	2	2	2
25	31058	3/8" Nut and Washer	1	1	1
30	31018	Impeller Bolt 5/16" x 18 - 1 w/Key	1		
30	31020	Impeller Bolt 7/16" x 20 - 1 w/Key		1	1
30	31060	Bolt, Nut, Washer for Nose Cone Brush	3	3	3
	31026	T Bolt Nose Cone to Blower	3	3	3
31	31057	Bolts (Nuts & Washers) 1 3/4 x 5/16"-18	4	4	4
29	31038	Thumb Nut for Castor Wheels	2	2	2
32	31056	Round Head Cap Screw 5/16 x 1 1/2" - 18	2	2	2
39	37008	Mounting Bracket	1		
39	37009	Mounting Bracket		1	
39	37010	Mounting Bracket			1
40	37014	Switch	1		
40	37015	Switch		1	1
41	37011	14 - 3 - Cord	1		
41	37012	14 - 4 - Cord		1	
41	37013	12 - 4 - Cord			1
22	33021	Blower Housing Axle	1	1	1
23	33022	Axle Wheel Spacer	2	2	2
45	20109	Intake Flange 2"	1	1	1
45	20110	Intake Flange 3"	1	1	1
45	20111	Intake Flange 4"	1	1	1
45	20112	Intake Flange 5"	1	1	1
45	20113	Intake Flange 6"	1	1	1
45	20114	Intake Flange 7"	1	1	1
45	20115	Intake Flange 8"	1	1	1
46	20143	Intake Nozzle 2"	1	1	1
46	20144	Intake Nozzle 3"	1	1	1
46	20145	Intake Nozzle 4"	1	1	1
46	20146	Intake Nozzle 5"	1	1	1
46	20147	Intake Nozzle 6"	1	1	1
46	20148	Intake Nozzle 7"	1	1	1
46	20149	Intake Nozzle 8"	1	1	1

Continued next page.

REF. NO.	PARTS NO.	DESCRIPTION	ELECTRIC MODELS		
			150	300	500
47	24511	Exhaust Flange 7"	1	1	1
48	27033	Dolly to Support Bag	1	1	1
49	27034	Bracket for Support Dolly	2	2	2
50	34018	Exhaust Metal Hose 7" x 10'	1	1	1
51	34000	Intake Hose 2" x 10'	1	1	1
51	34001	Intake Hose 3" x 10'	1	1	1
51	34002	Intake Hose 4" x 10'	1	1	1
51	34003	Intake Hose 5" x 10'	1	1	1
51	34004	Intake Hose 6" x 10'	1	1	1
51	34005	Intake Hose 7" x 10'	1	1	1
51	34006	Intake Hose 8" x 10'	1	1	1
52	34009	Hose Clamp 2"	2	2	2
52	34010	Hose Clamp 3"	2	2	2
52	34011	Hose Clamp 4"	2	2	2
52	34012	Hose Clamp 5"	2	2	2
52	34013	Hose Clamp 6"	2	2	2
52	34014	Hose Clamp 7"	2	2	2
52	34015	Hose Clamp 8"	2	2	2
53	31105	Rubber Gasket for Elbow	1	1	1
	210	Dust Control Bag	1	1	1
	510	Liner Bag	1	1	1
	710	Polypropylene Bag	1	1	1
	39010	1 1/2 H.P. Electric Motor	1		
	39011	3 H.P. Electric Motor*		1	
	39012	5 H.P. Electric Motor*			1
	* 220-440				

REFERENCE # FOR GIANT-VACS MODELS # 150, 300, 500 ELECTRIC



REFERENCE NUMBERS ONLY
REFER TO PARTS LIST FOR
PART NUMBERS

ELECTRIC VAC ONLY