
THE GIANT-VAC

535-835 TRAIL-VAC

MODELS 535 – 535C – 835 – 835IP

OPERATOR'S MANUAL

Congratulations!

You have just purchased one of the finest pieces of outdoor power equipment on the market today. If properly cared for, your Giant-Vac 535-835 Trail-Vac will provide years of dependable service. Please read and follow this instruction manual carefully in order to get the most out of your new equipment.

As you unpack your Trail-Vac, you will find the following parts:

- 1 – Container containing Power unit and manual package
- 1 – Container containing Trailer and chassis components

Your Giant-Vac Trail-Vac requires very little assembly. Simply follow the instructions contained within this manual to begin enjoying the benefits of your new unit.

Each Giant-Vac product leaves our factory in excellent condition; occasionally, however, some damage may occur during shipment. If any such damage is found upon initial inspection, *immediately* notify the transport carrier who delivered your machine, as they are solely responsible for such damage, as well as any subsequent adjustments necessary.

CALIFORNIA PROPOSITION 65 WARNING

Gasoline and Diesel engine exhaust and some of its constituents are known to the State of California to cause cancer, birth defects and other reproductive harm.

As an owner of off-road gasoline or diesel engine equipment and/or as an employer, you also may have an obligation under the California Occupational Safety and Health Act or under Proposition 65 to warn persons exposed to gas and diesel engine exhaust and/or other Proposition 65 chemicals in and around your workplace. See California Health and Safety Code section 25249.5, Title 22 of the California Code of Regulations at Section 1200 *et seq.*, and Title 8 of the California Code of Regulations Section 5194.

1

SAFETY RULES REGARDING OUTDOOR POWER EQUIPMENT

***IMPORTANT!* READ THE FOLLOWING SAFETY RULES *CAREFULLY* BEFORE ASSEMBLING OR OPERATING UNIT:**

- Regard your Giant-Vac as a piece of power equipment and teach this regard to all who will operate this unit. Never allow children or young teenagers to operate the unit.
- Always wear appropriate safety equipment when operating this unit. Proper eye, ear, and breathing protection is a must.
- Be sure you know how to stop both the unit and the engine at a **MOMENT'S NOTICE**. Refer to the operation section of this manual, as well as the engine manual.
- Do not operate with any guards or component parts removed from unit.
- Unless there is very good artificial light, use only during daylight.
- Fill gasoline driven machines outdoors. Avoid spilling gasoline and **DO NOT** fill the engine while it is running or while you are smoking.
- While in operation, keep all parts of body away from intake and exhaust sections. Never insert any body part or other foreign object in any opening while the machine is running.
- When operating unit, keep people and pets a safe distance away. Instruct children to keep away from the area of operation at all times.
- Do not use on steep inclines (over 30 degrees), as unit can roll over.
- Before making any adjustments or repairs, stop engine and remove spark plug wire.

FAILURE TO FOLLOW THESE RULES CAN RESULT IN CHRONIC HEALTH PROBLEMS, SERIOUS INJURY, OR EVEN DEATH.

2

UNIT ASSEMBLY

Note: Please refer to Parts List for correct part identification and placement

UNIT ASSEMBLY

Preliminaries: Remove metal crate from trailer. Set top panel (Parts List Ref #13) aside, then remove small tail gate (#8) and set aside as well. Remove all parts from inside trailer body.

AXLE AND WHEEL ASSEMBLY:

- Stand trailer body (#4) on end so bottom of trailer is facing you. Attach axle holders (#30, 30a) to brackets on bottom of trailer, under the brackets, with six 3/8 x 1" hex bolts, lock washers, and nuts (#36). Leave nuts loose.
- Insert axle (#17) into axle holders, with under frame back (#18) between brackets. Slip one 1" flat washer (#34) on each side between under frame back and axle holders. Tighten the bolts on axle holders.
- Place one 1" flat washer onto each end of axle, and push it up against axle holder. Slide wheel (#46) onto axle with one 3/4" flat washer (#47) on outside of each wheel. Attach each wheel with one 1/2 x 1" hex bolt, lock washer, and flat washer (#37). **Grease the wheels. The fittings are on the inside.** Lower the wheels to the ground, but leave the trailer tilted back.

CHASSIS AND POWER UNIT ASSEMBLY:

- Insert under frame front (#19) into under frame back, aligning holes in each, and fasten with six 3/8 x 1" hex bolts, lock washers, nuts, and 12 flat washers (#38). Tighten all nuts.
- Insert jack stand (#21) into slot in under frame front and fasten with jack stand pin (#22) and jack stand pin clip (#25).
- Attach dump lever holder (#26) to under frame front, aligning with holes closest to trailer. Fasten with two 3/8 x 1" hex bolts, lock washers, nuts, and four flat washers (#38). *Do not tighten these bolts yet.*
- Lower trailer onto under frame back. Install trailer dump support (#14) with six 3/8 x 1" hex bolts, lock washers, nuts, and twelve flat washers (#38). Tighten all nuts.
- Install dump lever (#27) into holder with one 3/8 x 1-1/4" hex bolt (#39) and one 3/8" lock nut (#39a). Attach dump lever spring (#29) to dump lever and to hole in dump lever holder. Lever should catch and hold trailer. If not, adjust dump lever holder (#26).
- Place power unit onto under frame front, aligning it with next set of holes. Attach with four 3/8 x 1" hex bolts, lock washers, nuts, and eight flat washers (#38).

2

UNIT ASSEMBLY

TRAILER ASSEMBLY:

- Install front panel (#6) to trailer body with three 5/16 x 3/4" hex bolts, lock washers, nuts and six flat washers (#42).
- Attach right side panel (#7) both to front panel and trailer body with six 5/16 x 3/4" hex bolts, lock washers, nuts, and twelve flat washers (#42). Check to make sure rear of side panels line up with inside tailgate track.
- Attach left side panel (#5) in same manner as right side panel.
- Attach rear support (#11) with two 5/16 x 3/4" hex bolts, lock washers, nuts and four flat washers (#42). *Tighten all bolts.*
- Place screen (#10) on top of trailer panel assembly, making sure all holes in top portion of panel assembly are covered by screen material.
- Place top panel (#13), open end toward back of unit, over screen, lining up holes in top with corresponding holes in panel assembly.
- Place the screen holder (#12) across back over rear support.
- Where holes line up between top, screen holder and top portion of panel assembly, put bolt holes into screen with a screwdriver. Attach top and screen holder with twelve 5/16 x 3/4" hex bolts, lock washers, nuts, and twenty-four flat washers (#42).
- Attach door locks (#35) to holes in sides with four 8-32 x 1/2" screws, flat washers, lock washers, and nuts (#44).
- Insert large tailgate (#8) into inside track in rear of trailer body, flat side in, and latch. Adjust door locks to achieve tight grip.

FINAL ASSEMBLY:

- Attach intake flange (#2) to power unit with three 5/16 x 5/8" hex bolts and lock washers (#41) in top three holes; do not use bottom hole.
- Attach tow bar (#20) to under frame front with two 1/2 x 1-1/4" hex bolts, lock washers, nuts, and flat washers (#40) in the two front holes.
- Install blower support (#49) at front base of power unit, using one 1/2" x 1-1/2" hex bolt, flatwasher, lockwasher and nut (#48) to secure support to under frame front, one 5/16 x 3/4" hex bolt, lockwasher and flatwasher (#41a) to secure support to power unit. Tighten all bolts.
- Insert the exhaust flange (#9) into slots in trailer front panel (#6).
- Slip one end of exhaust hose (#32) onto exhaust stack on top of power unit, the other end onto exhaust flange. Fasten each end with one 6" hose clamp (#31).

UNIT MOUNTING

MOUNTING UNIT TO MOWER:

- Attach tow bar of unit to mower with tow bar pin (#23), securing with pin (#24).
-

2

UNIT ASSEMBLY (cont.)

INSTALLING MOWER CHUTE KIT (55CR/55CL):

- Remove mower deflector.
- Measure length and height of mower deck discharge opening.
- Adjust mower chute to be slightly larger than the deck.
- Hold chute up to deck and check to make sure chute clears cutter blades as well as any moving parts of mower.
- After carefully checking clearance, mark mower deck with a pencil and drill two holes on the top as far apart as possible. Drill one hole in the side of the cutter deck. Drill this hole in the mower deck also. **NOTE: BEFORE DRILLING ANY HOLES IN THE MOWER DECK, MAKE SURE THE CHUTE CLEARS THE CUTTER BLADES.**
- Attach mower chute to the mower deck with two 5/16 x 3/4" hex bolts, lock washers, nuts, and flat washers, and one 5/16 x 3/4" hex bolt, lock washer, and flat washer, checking the clearance of the cutter blades again.
- Put one end of intake hose, Ref. #33, onto intake flange and the other end of the hose onto the chute. Fasten the hose in place with two 6" hose clamps.
- Place the hose boom, Ref. #15, onto the holder on the top of the power unit. Catch one hook on the rubber hose holder, Ref. #16, in the loop on the hose boom. Loop the other end of the hose holder under the intake hose and hook the end in the loop on the hose boom with the other hook. Adjust the position of the boom as needed to keep the intake hose out of the way of the mower.

NOTE: ALL MOWER GUARDS MUST BE RE-INSTALLED IF THE CUTTER DECK IS GOING TO BE OPERATED WITHOUT THE MOWER CHUTE.

OPTIONAL HOSE KIT (5835):

- The optional intake hose attachment can be installed by removing the 6' intake hose from the intake flange and replacing it with a 6" x 10' intake hose. Before installing the 10' hose, attach the nozzle to the other end of the hose. Do this by inserting the nozzle into the hose and holding them together with the 6" hose clamp from the other intake hose. Now you can clean around shrubs and pick up leaves that have been windrowed.

Assembly of your Giant-Vac Trail-Vac is now complete. Please read on in order to learn how to get the safest and most beneficial use from your unit.

3

UNIT OPERATION

STARTING THE ENGINE

IMPORTANT NOTE: The procedures outlined within this section are general guidelines, and are in no way meant to replace or supercede engine manufacturer's operating instructions. In order to obtain optimum performance from your engine, refer to your engine manual.

BEFORE STARTING ENGINE:

- Be sure that the unit is completely assembled, all fasteners are tightened securely, and all safety guards and components are in place.
- Be sure to check engine's **oil** and **gasoline***. (See engine manual for recommended oil and gasoline specifications.) **Never** check the engine while it is running or while you are smoking. Check only when engine is cold.
** All machines are shipped without oil or gasoline unless otherwise noted.*
- Be sure that fuel valve on engine is set to open position (if applicable).

TO START ENGINE :

- Set throttle control to "ON" position. If engine is cold, set choke (if so equipped). If your engine has a fuel prime button, depress it firmly three times.

Recoil Start:

- Grasp recoil handle and pull briskly. You may have to pull several times before engine starts. (If engine fails to start within a reasonable amount of time, discontinue and check engine manual for further instructions.) Note: Do not allow recoil rope to snap back into recoil; damage to the rope or recoil could result.

Electric Start:

- Turn ignition key past 'on' to 'start'. When started, release key. If engine fails to start within a reasonable amount of time, discontinue and check engine manual for further instructions.
- After engine starts, move throttle control down to approximately half, and turn off choke.

TO SHUT ENGINE DOWN :

- Allow engine to idle for 2-3 minutes before shutting down.
- Set throttle control to 'off' position.
- If engine is not to be started for a prolonged period, turn fuel valve to closed position.

IMPORTANT NOTE: If you experience problems with your engine that cannot be satisfactorily resolved by following the instructions contained within the engine manual, contact your local engine dealer, or call the toll-free service number listed in the repair section of the engine manual. All engine service, warranty or otherwise, is required to be performed by a manufacturer-authorized service center. Giant-Vac, Inc. is neither authorized nor responsible for any type of warranty engine service, nor is it equipped to perform any such service.

3

UNIT OPERATION (cont.)

GENERAL RULES TO OBSERVE BEFORE AND DURING OPERATION

- Inspect your unit before each and every use. Check for worn parts, bent wheels, loose fasteners, and repair or replace prior to operation. **DO NOT OPERATE A DEFECTIVE UNIT – SERIOUS INJURY OR DEATH CAN RESULT.**
- Clear the entire work area of all debris that could cause damage to or become entangled in the unit. Rocks and large branches can wedge themselves between the impeller and housing, causing engine seizure, impeller damage, or personal injury. If in doubt, remove it.
- Do not start unit until you are ready to begin debris removal, and promptly shut off unit as soon as operation is complete.
- Set unit initially at approximately half throttle to begin debris removal. Increase as needed. For wet or frozen debris, increase throttle to full.
- Use proper discretion in selecting your debris removal pattern, especially on uneven terrain. Avoid steep hills, especially if surface is wet. Do not travel straight down slopes exceeding 14 degrees. If tires begin to slip when climbing a slope, the grade is too steep for safe operation. Angle the unit to a less steep slope until tires stop slipping and traction is regained.
- Be keenly aware of your surroundings while operating unit – children and pets can pop out of nowhere.
- Be keenly aware of the presence of the unit behind the mower, especially when backing up or negotiating tight turns. Failure to do so may result in personal injury, or damage to the mower, unit, or surrounding property.
- Learn to listen to your machine – being aware of what a well-running unit sounds like can alert you to a potential problem. A straining engine, a clanging impeller means that trouble is almost sure to follow.

OPERATING THE CHIPPER (535C only)

CAUTION: Regard the chipper feature of this unit as a dangerous instrument. Failure to wear proper safety equipment, or practice safe operation, can result in serious injury.

- Be sure all components are securely attached. Because of the high discharge velocity, debris can become dangerous flying projectiles, causing serious injury.

3

UNIT OPERATION (cont.)

- It is best to gather up all the debris you desire to chip into a pile before operating the unit, to avoid leaving the unit unattended.
- Start engine and set throttle at approximately 3/4 full. Remove chipper chute push bar, and begin slowly feeding debris into the chipper chute. **CAUTION: DO NOT PLACE HANDS OR FINGERS INTO CHIPPER CHUTE.** Use the push bar to feed lengths of debris shorter than the chute into the chipper blade.
- This unit is designed to accept clippings and debris from trees and shrubs. **DO NOT ATTEMPT TO FEED ANY OTHER TYPE OF MATERIAL INTO THE UNIT, ESPECIALLY METAL.** **DOING SO CAN CAUSE EXTENSIVE DAMAGE TO THE UNIT, AS WELL AS SERIOUS PERSONAL INJURY.**
- This machine is designed to handle debris up to 2" in diameter. **DO NOT ATTEMPT TO FEED LARGER MATERIAL INTO THE MACHINE.** It can become jammed in the chipper chute.
- Before shutting the unit down, be sure to clear the chipper chute of any debris by pushing the chipper chute push bar fully into the chute. Also, allow the chipper to run a minute or two after the last debris has been inserted, to allow the chipper to clear itself out.

4

MAINTENANCE AND STORAGE

GENERAL MAINTENANCE AND STORAGE

- Follow **implicitly** the engine manufacturer's recommendations for maintenance.
- Never make any adjustments to the unit until the engine is **off** and the spark plug wire is disconnected.
- If carburetor adjustment is necessary, stand to one side and **keep feet and hands** in the clear while making adjustments.
- Keep engine free of accumulations of grass, leaves or excessive grease. An accumulation of these combustible materials may result in a fire.
- Store gasoline in a **safe and approved** container in a cool, dry place.
- Keep the unit and any fuel containers in locked storage to prevent children from playing and/or tampering with them.
- Do not store gasoline powered equipment or fuel containers in a basement or any closed area where heating or heat appliances or open pilot lights are present, unless the fuel is completely drained from the power equipment and the fuel containers.

CHIPPER BLADE SHARPENING/REPLACEMENT (535C only)

As with all cutting surfaces, the chipper blade on your 535C can eventually become dull. This blade can be removed for sharpening. Also, incorporated into the design of the Chipper is a replacement chipper blade that doubles as a shear plate for the chipper. These two blades can be interchanged as needed. Either of these procedures can be performed as follows:

- Remove the spark plug wire to prevent inadvertant starting of unit while maintenance is being performed.
- Remove the impeller housing from the unit (by means of the 5/16 x 3/4" bolts, lockwashers, and nuts securing housing to the rear housing plate), exposing the impeller.
- Remove the impeller from the engine shaft by first removing the bolt and washers securing the impeller to the shaft, then sliding the impeller off the shaft. This may require the use of a prybar placed between the rear of the impeller and the rear housing plate and applying a generous amount of pressure. (Soaking the shaft with a liberal amount of penetrating oil beforehand can greatly reduce the amount of force needed to free the impeller.) If the impeller still cannot be removed, an impeller puller may be required (Giant-Vac model 5811-P; part #31599).

4 MAINTENANCE AND STORAGE (cont.)

- To sharpen the blade, remove the nuts, washers, and bolts securing the chipper blade to the impeller. Grind the cutting surface lightly and evenly at a **40 degree angle** until sharp. Reinstall the blade onto the impeller, making sure the entire cutting surface extends just beyond the edge of the chip relief slot in the impeller. (Failure to do this may result in debris being caught in the impeller.)
- To interchange blades, remove the blades from both the impeller and the rear housing plate, **making careful note as to how they are attached.** (Especially note that the cutting surface of the shear plate/replacement blade faces down toward the ground, with the flat edge facing up toward the chipper chute.) Also, be sure to note the number and location of the blade shims that may have been used, as these serve to adjust the cutting gap tolerance crucial to effective chipper operation. Swap the blades, installing each exactly the way the other was removed. **NOTE: INCORRECT INSTALLATION OF EITHER OF THE BLADES CAN RESULT IN SERIOUS DAMAGE TO THE UNIT, AS WELL AS SERIOUS PERSONAL INJURY.**
- Reinstall the impeller onto the engine shaft, securing with bolt and washers.
- Check the cutting gap tolerance by positioning the cutting blade on the impeller directly over the shear plate/replacement blade and measuring the gap between the two with a feeler guage. **Correct gap width is .040-.050.** If adjustment is needed, it can be achieved by either removing or adding shims between the shear plate/replacement blade and the rear housing plate (additional shims can be obtained through your Giant-Vac dealer - see parts list for part numbers) and/or by loosening the engine mounting bolts and sliding the engine forward or backward until required gap is achieved. Retighten mounting bolts, as well as making sure all other bolts that have been removed have been reinstalled and tightened securely. Further check blade clearance by removing the spark plug wire, pulling the recoil rope, and listening, as the impeller rotates, for any sound that may indicate contact between the blade and the shear plate. **(IMPORTANT NOTE: Be sure to wear safety eyewear when performing this step - tempered steel blades can shatter if they contact each other at any speed.)** If no contact is detected, replace the impeller housing with all corresponding hardware.

GIANT-VAC WARRANTY

GIANT-VAC, INC., here-in-after called Giant-Vac, warrants each new Giant-Vac to the original retail purchaser of the new Giant-Vac equipment to be free from manufacturing defects in normal service for a period of 1 year, unless it is used for rental purposes, which limits the warranty to 30 days. This warranty does not apply to engines, tires or other parts that are purchased and warranted by their manufacturer. Items such as bags, grass catchers, hoses and blades are not warranted, as these are considered expendable items. This warranty does not include equipment failures due to normal wear.

Any obligation under this warranty is expressly limited to the replacement or repair, at an authorized servicing Giant-Vac dealer, or at a point designated by us, of such parts as appear to us to have been defective. All defective parts have to be returned freight prepaid before credit will be issued.

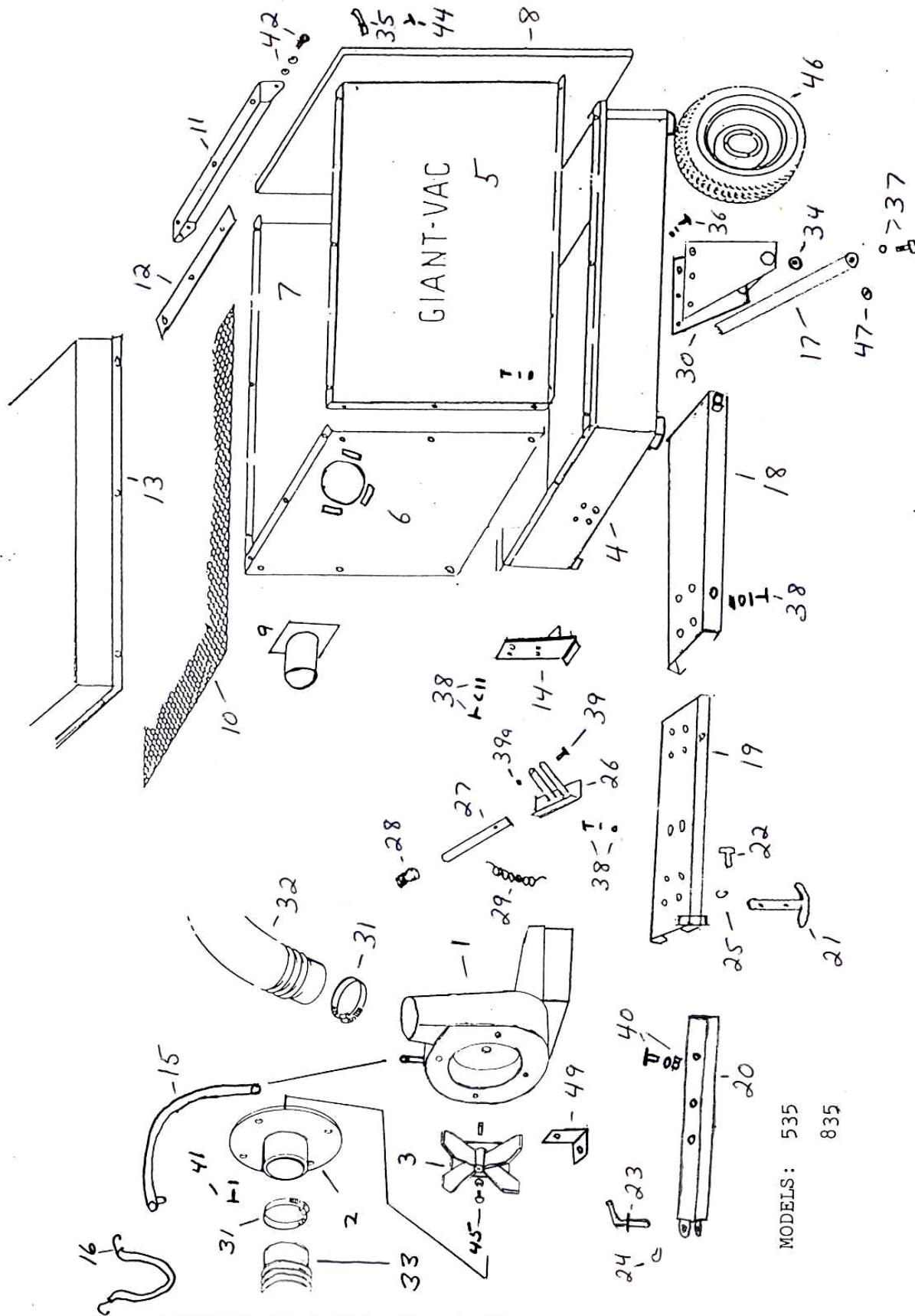
We shall not be liable for transportation charges in connection with the replacement or repair of defective parts.

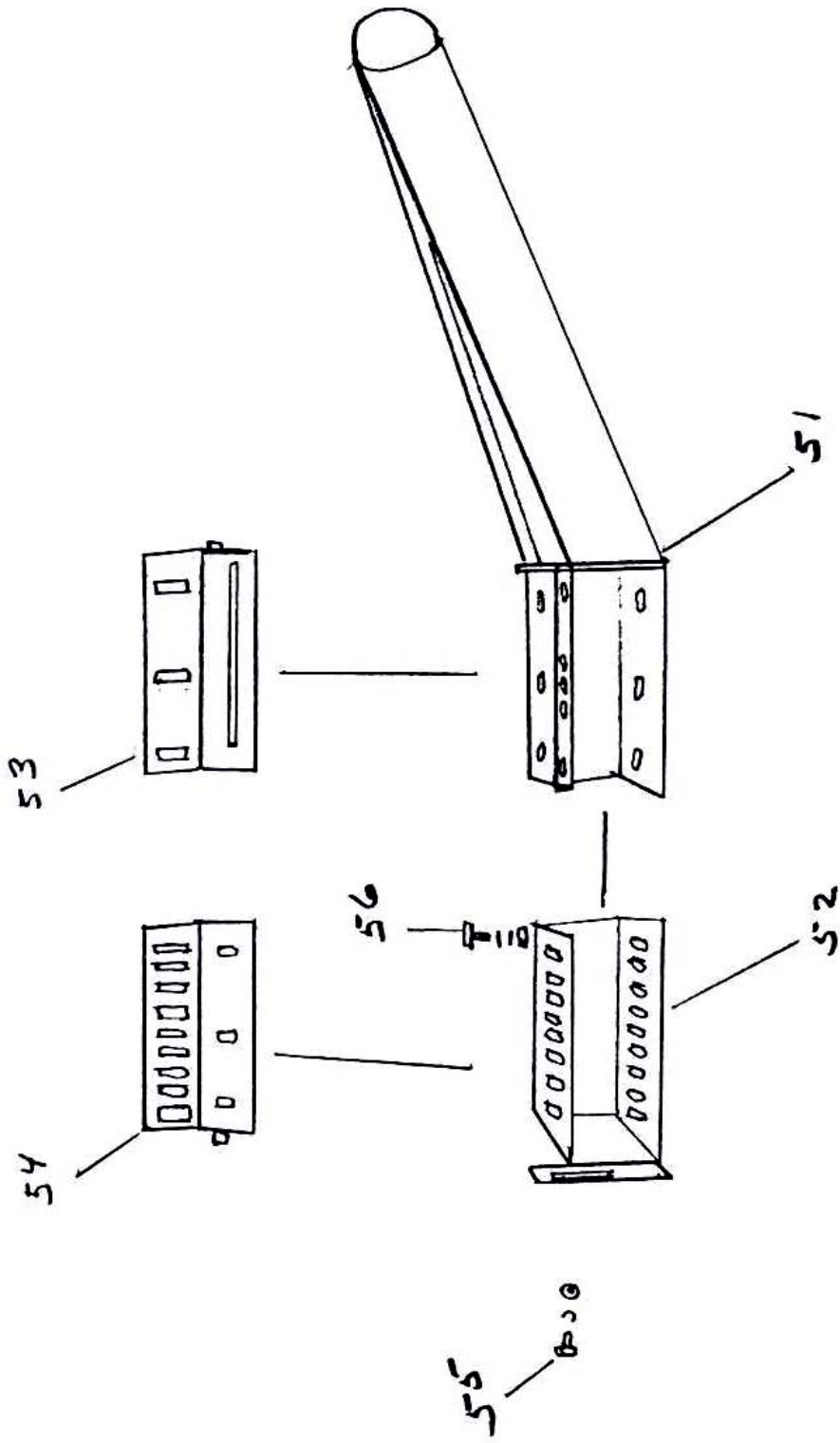
This warranty does not apply to a Giant-Vac upon which repairs or alterations have been made by others except with our prior written approval.

We shall not be liable for consequential damages or contingent liabilities for the fitness of any Giant-Vac for any particular purpose.

We make no other express, implied or statutory warranty, nor is anyone authorized to make any in our behalf.

GIANT-VAC, INC.
P.O. BOX 195
SOUTH WINDHAM, CT. 06266
PHONE: 860-423-7741 • FAX: 860-423-2654





MOWER CHUTE FOR MODELS: 535

835

PARTS LIST NO. 5760

<u>REF.</u> <u>NO.</u>	<u>PART</u> <u>NO.</u>	<u>DESCRIPTION</u>	<u>535</u>	<u>535C</u>	<u>835</u>	<u>835IP</u>
1	10100	Engine base & blower housing	1	--	--	--
1	10218	Engine & chipper chute base – 535C	--	1	--	--
1	10219	Impeller housing – 535C	--	1	--	--
1	31400	5/16-18 x 3/4" hex bolt – 535C housing bolt	--	9	--	--
1	31003	5/16 lock washer	--	9	--	--
1	31004	5/16-18 hex nut	--	9	--	--
1	10102	Engine base & blower housing	--	--	1	1
2	20184	Intake flange	1	1	1	1
3	21501	Impeller	1	--	--	--
3	21561	Impeller – 535C	--	1	--	--
3	21558	Impeller (complete w/Taper-Lok hub)	--	--	1	1
4	27161	Trailer body	1	1	1	1
5	27149	Left upper side	1	1	1	1
6	27150	Front	1	1	1	1
7	27151	Right upper side	1	1	1	1
8	27152	Large tail gate	1	1	1	1
8	27153	Small tail gate	1	1	1	1
9	24583	Exhaust flange	1	1	1	1
10	27154	Screen	1	1	1	1
11	27155	Rear support	1	1	1	1
12	27156	Screen holder	1	1	1	1
13	27157	Top	1	1	1	1
14	27158	Body front dump support	1	1	1	1
15	23124	Hose boom	1	1	1	1
16	31358	Rubber hose holder (bungee cord)	1	1	1	1
17	33110	Axle	1	1	1	1
18	27159	Under frame back	1	1	1	1
19	27160	Under frame front	1	1	1	1
20	33109	Tow bar	1	1	1	1
21	33111	Jack stand	1	1	1	1
22	31359	Jack stand pin	1	1	1	1
23	31360	Tow bar pin	1	1	1	1
24	31361	Tow bar clip	1	1	1	1
25	31362	Jack stand clip	1	1	1	1
26	23125	Dump lever holder	1	1	1	1
27	23126	Dump lever	1	1	1	1
28	31363	Dump lever rubber grip	1	1	1	1
29	31364	Dump lever spring	1	1	1	1
30	33108	Axle holder - left	1	1	1	1
30a	33211	Axle holder – right	1	1	1	1
31	34013	6" hose clamp	4	4	4	4
32	34045	Exhaust hose 6" x 4'	1	1	1	1
33	34046	Intake hose 6" x 6'	1	1	1	1
34	31365	1" flat washer	4	4	4	4
35	31366	Door lock	2	2	2	2
36	31066	3/8 x 1" bolt/lock washer/nut	12	12	12	12
37	31368	1/2 x 1" bolt/lock washer/flat washer	2	2	2	2
38	31373	3/8 x 1" bolt/2 flat washers/lock washer/nut	18	18	18	18
39	31097	3/8 x 1-1/4" bolt	1	1	1	1

PARTS LIST NO. 5760

<u>REF. NO.</u>	<u>PART NO.</u>	<u>DESCRIPTION</u>	<u>535</u>	<u>535C</u>	<u>835</u>	<u>835IP</u>
39a	31355	3/8-16 lock nut	1	1	1	1
40	31375	1/2 x 1-1/4" bolt/flat washer/lock washer/nut	2	2	2	2
41	31372	5/16 x 5/8" bolt and lock washer	3	3	3	3
41a	31377	5/16 x 3/4" bolt/lockwasher/flatwasher	1	1	1	1
42	31376	5/16 x 3/4" bolt/2 flat washers/lock washer/nut	29	29	29	29
44	31371	8-32 x 1/2" bolt/flatwasher/lock washer/nut	4	4	4	4
45	31019	3/8-24 x 2" impeller bolt, washers & key	1	1	1	1
45	21559	Taper-Lok hub – 1-1/8"	--	--	1	1
45	31646	5/16-18 x 1-1/4" Gr 5 hex bolt	--	--	3	3
45	31003	5/16 lock washer	--	--	3	3
45	31795	1/4 x 2-1/8" impeller shaft key	--	--	1	1
46	33112	16/6.50 x 8 wheel	2	2	2	2
47	31370	3/4" flat washer	2	2	2	2
48	31369	1/2 x 1-1/2" bolt/flat washer/lock washer/nut	1	1	1	1
49	27162	Blower support – 5HP	1	1	--	--
49	27346	Blower support – 8HP	--	--	1	1

ITEMS NOT SHOWN

39077	5.5 HP B&S Intek engine	1	1	--	--
39064	8 HP B&S engine	--	--	1	--
39066	8 HP B&S I/P engine	--	--	--	1
31294	5/16-18 x 1-1/2 hex bolt (5.5HP engine bolt)	4	4	--	--
31002	5/16-18 x 1-3/4 hex bolt (8HP engine bolt)	--	--	4	4
31003	5/16 lock washer	4	4	4	4
31004	5/16-18 hex nut	4	4	4	4
21565	Chipper blade – 535C	--	2	--	--
27277	Chipper blade shim – 1/16" – 535C	--	varies	--	--
27278	Chipper blade shim – 3/32" – 535C	--	varies	--	--
27279	Chipper blade shim – 1/4" - 535C	--	varies	--	--
31648	5/16-18 x 1 hex flathead socket bolt – 535C	--	6	--	--
31003	5/16 lock washer – 535C	--	6	--	--
31426	5/16-18 lock nut – 535C	--	6	--	--
20207	Chipper chute safety flap – 535C	--	2	--	--
31635	1/4-20 x 5/8 hex bolt – 535C	--	4	--	--
31317	1/4 flat washer	--	4	--	--
31098	1/4-20 lock nut	--	4	--	--
20208	Chipper chute push bar	--	1	--	--

PARTS LIST NO. 5760

<u>REF.</u> <u>NO.</u>	<u>PART</u> <u>NO.</u>	<u>DESCRIPTION</u>	<u>535</u>	<u>535C</u>	<u>835</u>	<u>835IP</u>
<u>MOWER CHUTE</u>						
51	27163	Chute tube end - right	1	1	1	1
51	27164	Chute tube end - left	1	1	1	1
52	27165	Chute front end - right	1	1	1	1
52	27166	Chute front end - left	1	1	1	1
53	27167	Tube end upper plate - right	1	1	1	1
53	27168	Tube end upper plate - left	1	1	1	1
54	27169	Front end upper plate - right	1	1	1	1
54	27170	Front end upper plate - left	1	1	1	1
55	31377	5/16 x 3/4" bolt, lock washer, and flat washer	2	2	2	2
56	31376	5/16 X 3/4" bolt/2 flat washers/lock washer/nut	9	9	9	9
	27146	Complete chute - right hand	1	1	1	1
	27147	Complete chute - left hand	1	1	1	1

SPECIFICATIONS SUBJECT TO CHANGE WITHOUT NOTICE