
THE GIANT-VAC

'900' VAC

MODEL 900

OPERATOR'S MANUAL

Congratulations!

You have just purchased one of the finest pieces of outdoor power equipment on the market today. If properly cared for, your Giant-Vac 900 Vac will provide years of dependable service. Please read and follow this instruction manual carefully in order to get the most out of your new equipment.

As you unpack your unit, you will find the following parts:

- 1 - Power unit
- 1 - Handle assembly in four parts
- 1 - Package of hardware
- 1 - Package containing operating manuals and warranty registration

Your Giant-Vac 900 Vac requires very little assembly. Simply follow the instructions contained within this manual to begin enjoying the benefits of your new unit.

Each Giant-Vac product leaves our factory in excellent condition; occasionally, however, some damage may occur during shipment. If any such damage is found upon initial inspection, *immediately* notify the transport carrier who delivered your machine, as they are solely responsible for such damage, as well as any subsequent adjustments necessary.

CALIFORNIA PROPOSITION 65 WARNING

Gasoline and Diesel engine exhaust and some of its constituents are known to the State of California to cause cancer, birth defects and other reproductive harm.

As an owner of off-road gasoline or diesel engine equipment and/or as an employer, you also may have an obligation under the California Occupational Safety and Health Act or under Proposition 65 to warn persons exposed to gas and diesel engine exhaust and/or other Proposition 65 chemicals in and around your workplace. See California Health and Safety Code section 25249.5, Title 22 of the California Code of Regulations at Section 1200 *et seq.*, and Title 8 of the California Code of Regulations Section 5194.

9/01 Revision

1

SAFETY RULES REGARDING OUTDOOR POWER EQUIPMENT

IMPORTANT! READ THE FOLLOWING SAFETY RULES CAREFULLY BEFORE ASSEMBLING OR OPERATING UNIT:

- Regard your Giant-Vac as a piece of power equipment and teach this regard to all who will operate this unit. Never allow children or young teenagers to operate the unit.
- Always wear appropriate safety equipment when operating this unit. Proper eye, ear, and breathing protection is a must.
- Be sure you know how to stop both the unit and the engine at a **MOMENT'S NOTICE**. Refer to the operation section of this manual, as well as the engine manual.
- Do not operate with any guards or component parts removed from unit.
- Unless there is very good artificial light, use only during daylight.
- Fill gasoline driven machines outdoors. Avoid spilling gasoline and **DO NOT** fill the engine while it is running or while you are smoking.
- While in operation, keep all parts of body away from intake and exhaust sections. Never insert any body part or other foreign object in any opening while the machine is running.
- When operating unit, keep people and pets a safe distance away. Instruct children to keep away from the area of operation at all times.
- Do not use on steep inclines (over 30 degrees), as unit can roll over.
- Before making any adjustments or repairs, stop engine and remove spark plug wire.

FAILURE TO FOLLOW THESE RULES CAN RESULT IN CHRONIC HEALTH PROBLEMS, SERIOUS INJURY, OR EVEN DEATH.

2

UNIT ASSEMBLY

HANDLE ASSEMBLY

Please refer to Parts list for correct part identification and placement

- Insert Lower handles (Parts List Ref. #9,9a) into Upper handle (#10) until bolt holes are aligned. Slip one 5/16 x 1-1/2" round slotted head bolt (#32a) out through the inside (to prevent bag puncture) of each set of holes. Align holes in rear (forked) end of handle brace (#10) with same set of holes in upper handle. Secure each bolt with one 5/16 lockwasher (#32b) and acorn nut (#32c).
- Attach lower portion of handle assembly to engine base with four 5/16 x 1-3/4" bolts, lockwashers, and nuts. Slide hole in front end of handle brace onto stud in top of blower housing and fasten with 3/8 lockwasher (#11) and nut (#12). Tighten all handle assembly bolts securely.
- Attach Throttle control (#13) to corresponding holes in upper left corner of handle assembly with two #10 x 1-1/4" machine screws, lockwashers and nuts (#33). Note: Be sure to attach throttle control to outside of handle assembly. Secure throttle cable to handle with two throttle cable clips (#13a), placing one just below where handle brace joins with upper handle, the other 4-5" above bend in lower handle. Note: Be sure to check throttle for smooth operation. If throttle lever binds, or is difficult to operate, adjust cable and clips accordingly.

ATTACHING THE NOSE CONE

- Align holes in nose cone bolt ring with corresponding holes in front of power unit. Fasten with eight 5/16 x 3/4" hex bolts (#27) and lockwashers (#27a). Tighten bolts securely. Note: Height adjustment will be covered in the operation section of this manual.

ATTACHING THE DISCHARGE ELBOW

- Place discharge elbow (#7) atop discharge of power unit, aligning holes in discharge elbow bolt ring with corresponding holes in both rubber gasket (#44) and top discharge of power unit. Be sure discharge of elbow is directed toward rear of machine. Drop one 5/16 x 1" hex bolt (#28) down through each of the four holes, and fasten with lockwashers (#28a) and wing nuts (#28b). Tighten securely.

ATTACHING THE DEBRIS BAG

- Making sure that the bag is positioned upright (check the lettering), slip the mouth of the bag over the discharge elbow, making sure the tightening belt is past the anti-slip ridge of the elbow. Pull the slack of the belt tight. Fasten the rear end of the bag onto the handle bar with the two loop clips.

3

UNIT OPERATION

STARTING THE ENGINE

IMPORTANT NOTE: The procedures outlined within this section are general guidelines, and are in no way meant to replace or supercede engine manufacturer's operating instructions. In order to obtain optimum performance from your engine, refer to your engine manual.

BEFORE STARTING ENGINE:

- Be sure that the unit is completely assembled, all fasteners are tightened securely, and all safety guards and components are in place.
- Be sure to check engine's oil and gasoline* (See engine manual for recommended oil and gasoline specifications.) **Never** check the engine while it is running or while you are smoking. Check only when engine is cold.
 - * **All machines are shipped without oil or gasoline unless otherwise noted.**
- Be sure that fuel valve on engine is set to open position (if applicable).

TO START ENGINE :

- Set throttle control to "ON" position. If engine is cold, set choke (if so equipped). If your engine has a fuel prime button, depress it firmly three times.
- Grasp recoil handle and pull briskly. You may have to pull several times before engine starts. (If engine fails to start within a reasonable amount of time, discontinue and check engine manual for further instructions.)
- After engine starts, move throttle control down to approximately half, and turn off choke.

TO SHUT ENGINE DOWN :

- Allow engine to idle for 2-3 minutes before shutting down.
- Set throttle control to 'off' position.
- If engine is not to be started for a prolonged period, turn fuel valve to closed position.

IMPORTANT NOTE: If you experience problems with your engine that cannot be satisfactorily resolved by following the instructions contained within the engine manual, contact your local engine dealer, or call the toll-free service number listed in the repair section of the engine manual. All engine service, warranty or otherwise, is required to be performed by a manufacturer-authorized service center. Giant-Vac Mfg., Inc. is neither authorized nor responsible for any type of warranty engine service, nor is it equipped to perform any such service.

3

UNIT OPERATION

GENERAL GUIDELINES TO OBSERVE DURING OPERATION

- The height of the nose cone is adjusted by loosening the thumb nuts securing the two threaded caster wheel studs, raising or lowering the caster wheels, then tightening the thumb nut after the desired height has been attained. In general, if your Giant-Vac is being used on an even surface, a 5/8 inch clearance for the nose cone is desirable.
- The brush at the back of the nose cone is easily raised or lowered by loosening two bolts and sliding the brush and brush holder by means of the adjustable slots provided. The height of the brush depends upon the particular application. In essence, the brush should be touching the surface.
- The debris bag must be kept clean for efficient operation of your Giant-Vac. Periodic cleaning will promote maximum efficiency. One way is to leave the zipper open and run the engine for a few minutes while shaking the bag vigorously. Turning the bag inside out and sweeping briskly with a stiff broom is sometimes desirable.
- For extreme dust applications, a liner bag (GV part #610) is available that fits inside the supplied 310 bag.

4

MAINTENANCE AND STORAGE

- Follow **implicitly** the engine manufacturer's recommendations for maintenance.
- Never make any adjustments to the unit until the engine is **off** and the spark plug wire is disconnected.
- If carburetor adjustment is necessary, stand to one side and **keep feet and hands** in the clear while making adjustments.
- Keep engine free of accumulations of grass, leaves or excessive grease. An accumulation of these combustible materials may result in a fire.
- Store gasoline in a **safe and approved** container in a cool, dry place.
- Keep the unit and any fuel containers in locked storage to prevent children from playing and/or tampering with them.
- Do not store gasoline powered equipment or fuel containers in a basement or any closed area where heating or heat appliances or open pilot lights are present, unless the fuel is completely drained from the power equipment and the fuel containers.

GIANT-VAC WARRANTY

GIANT-VAC, INC., here-in-after called Giant-Vac, warrants each new Giant-Vac to the original retail purchaser of the new Giant-Vac equipment to be free from manufacturing defects in normal service for a period of 1 year, unless it is used for rental purposes, which limits the warranty to 30 days. This warranty does not apply to engines, tires or other parts that are purchased and warranted by their manufacturer. Items such as bags, grass catchers, hoses and blades are not warranted, as these are considered expendable items. This warranty does not include equipment failures due to normal wear.

Any obligation under this warranty is expressly limited to the replacement or repair, at an authorized servicing Giant-Vac dealer, or at a point designated by us, of such parts as appear to us to have been defective. All defective parts have to be returned freight prepaid before credit will be issued.

We shall not be liable for transportation charges in connection with the replacement or repair of defective parts.

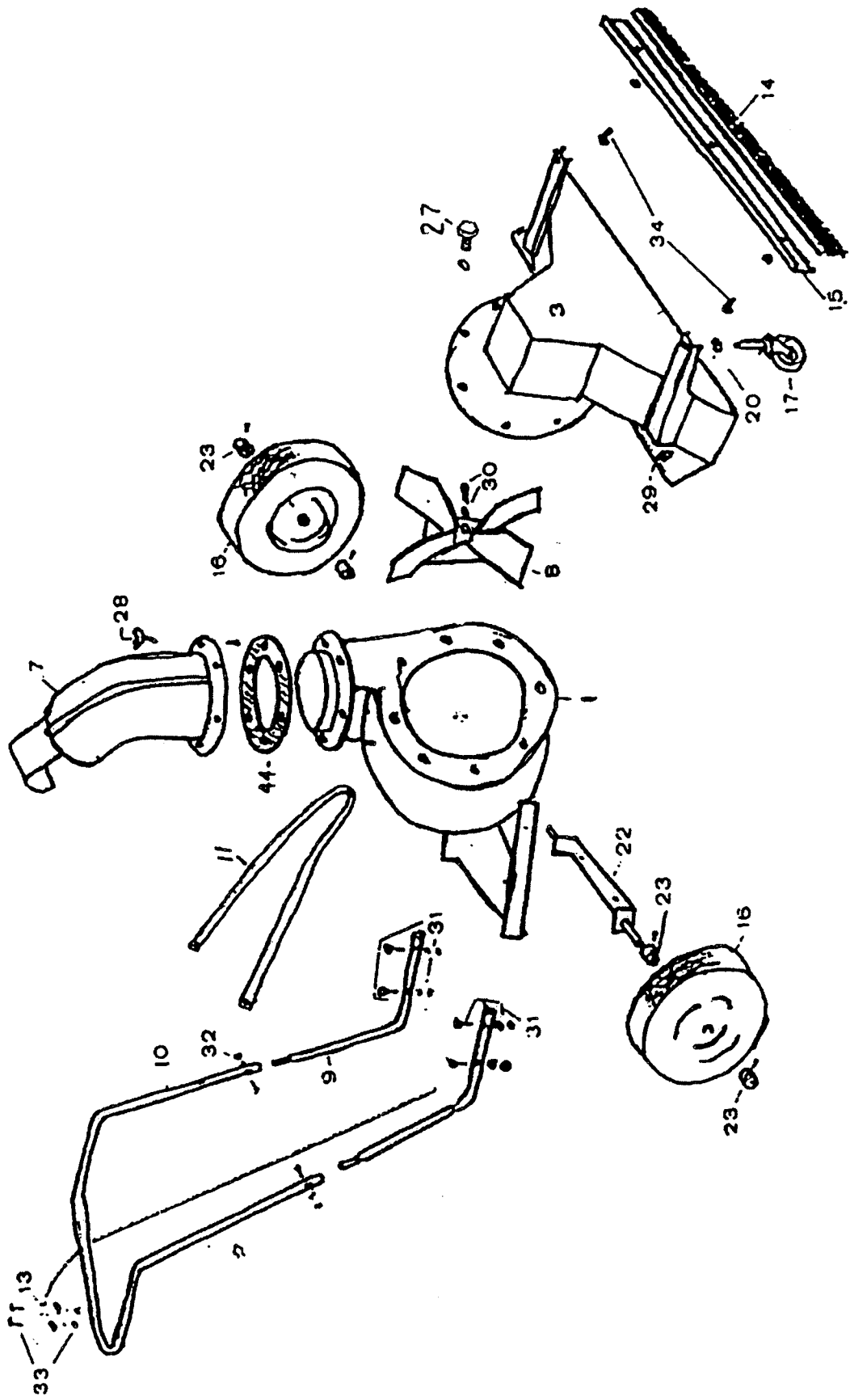
This warranty does not apply to a Giant-Vac upon which repairs or alterations have been made by others except with our prior written approval.

We shall not be liable for consequential damages or contingent liabilities for the fitness of any Giant-Vac for any particular purpose.

We make no other express, implied or statutory warranty, nor is anyone authorized to make any in our behalf.

**GIANT-VAC, INC.
P.O. BOX 195
SOUTH WINDHAM, CT. 06266
PHONE: 860-423-7741 • FAX: 860-423-2654**

REFERENCE FOR GIANT-VAC MODEL #900



PARTS LIST NO. 5710

<u>REF.</u> <u>NO.</u>	<u>PART</u> <u>NO.</u>	<u>DESCRIPTION</u>	<u>900</u>
1	10012	Housing & base assy	1
3	27025	42" nose cone body	1
7	24510	Exhaust elbow	1
8	21545	Impeller	1
9	23013	Lower handle - left	1
9a	23010	Lower handle - right	1
10	23009	Upper handle	1
10a	31590	Foam handle grip - 1" x 24"	1
11	23016	Handle brace	1
11a	31008	3/8 lockwasher	1
11b	31009	3/8-16 hex nut - fastens brace to housing	1
13	35004	Throttle control - 72"	1
13a	31007	Throttle cable clip	2
14	27028	Nose cone brush - 42"	1
15	27031	Nose cone brush holder - 42"	1
16	33037	Wheel & tire assy - 480-8 pneumatic	2
17	33024	Caster wheel assy - 5"	2
20	31038	3/4" wing nut	2
22	33025	Blower Axle	1
22a	31033	3/8-16 x 1" hex bolt - fastens axle to housing base	2
22b	31008	3/8" lockwasher	2
22c	31009	3/8-16 hex nut	2
23	33056	Bearing set (1 set equals 2)	2
23a	33057	Bearing seal	4
23b	31023	3/4" flat washer	2
23c	31451	3/4-25 castle nut	2
23d	31783	Cotter pin - 1/8" x 1-1/2" oal	2
23e	33055	Dust cap	2
27	31063	5/16-18 x 3/4" hex bolt - fastens nose cone to housing	8
27a	31003	5/16 lockwasher	8
28	31282	5/16-18 x 1 hex bolt - fastens discharge elbow to housing	4
28a	31003	5/16 lockwasher	4
28b	31592	5/16-18 wing nut	4
30	31020	Impeller bolt , washer & key group	1
31	31002	5/16-18 x 1-3/4" hex bolt - fastens lowers to housing base	4
31a	31003	5/16 lockwasher	4
31b	31004	5/16-18 hex nut	4
32	31056	5/16-18 x 1-1/2" round slotted head bolt- fastens lower handles to upper handle	2
32a	31028	5/16-18 acorn nut	2
33	31010	#10-24 x 1-1/4" bolt/lockwasher/nut group - fastens throttle control to handle	2
34	31144	5/16-18 x 1-1/4" hex bolt - fastens brush & brush holder to nose cone	2
34a	31027	5/16 flatwasher	2
34b	31003	5/16 lockwasher	2
34c	31004	5/16-18 hex nut	2
44	31105	Rubber Gasket	1

PARTS LIST NO. 5710 (cont.)

<u>REF.</u>	<u>PART</u>	<u>DESCRIPTION</u>	<u>900</u>
<u>NO.</u>	<u>NO.</u>		

ITEMS NOT SHOWN

310	Dust Control Bag	1
610	Liner Bag	1
810	Polypropylene Bag	1
39037	11 HP B&S IP Engine	1
31002	5/16-18 x 1-3/4" hex bolt - engine mount bolt	4
31003	5/16 lockwasher	4
31004	5/16-18 hex nut	4

SPECIFICATIONS SUBJECT TO CHANGE WITHOUT NOTICE