

GIANT-VAC MFG. INCORPORATED  
SOUTH WINDHAM, CT. 06266  
203-423-7741

ASSEMBLY AND OPERATION INSTRUCTIONS  
FOR

MODELS 6500 - 6800 - 9800 - TR-14-20-25  
6600-D - 9900-D - TR-14-20-25

Inspect parts for any damage that might have occurred in shipping. If anyis found or any shortages noted, notify the transport carrier who delivered your machine as he is responsible for the damage and is the only one to make any adjustments. Before leaving our plant, all components were completely inspected. All manufacturing dimensions are held to close tolerances, and thus, you will have little difficulty in assembling your Giant-Vac Truck Loader, if you follow these steps.

ENGINE INSTRUCTIONS: An engine manual is supplied with each shipment. This should be read carefully. Instructions on oil changes should be carefully noted to ensure maximum engine life.

We recommend that the engine be run at a fast idle for at least 2 hours. Please follow engine manufacturers manual for proper procedure and for service.

The engine is warranted by the engine manufacturer. Please be certain to mail to them the warrantee card, IMMEDIATELY. If any engine problems exist, please contact their nearest service center as only they can authorize any warrantee claims.

CAUTION  
ROTATING FAN

BEFORE MAKING ANY ADJUSTMENTS OR REPAIRS,  
STOP ENGINE. WHILE IN OPERATION KEEP  
ALL PARTS OF THE BODY AWAY FROM INTAKE AND  
EXHAUST SECTIONS.

READ THE SAFETY AND OPERATING INSTRUCTION SHEET BEFORE OPERATING  
THE GIANT-VAC TRUCK LOADER.

ASSEMBLY: The boom holders are located on the side of the exhaust stack and elbow (Ref. #34). Next the boom should be installed in the boom holders. This is done by sliding the vertical arm into the upper bracket on the exhaust stack and elbow and then dropping down into the lower bracket. The outrigger arm is next installed and fastened with a 1/2" bolt and lock nuts. The threaded support spring arm is fastened which completes this assembly.

HOSE ASSEMBLY AND POSITIONING: The hose is next installed and secured to the flange by means of a stainless steel hose clamp. Following this, the boom hose support band is slipped over the hose. This should be secured about 2 feet from the end of the hose. The pick up nozzle is next installed and fastened with a second hose clamp.

A chain connects the hose support band to the end of the boom. It is vitally important that this chain is adjusted correctly for ease of operation. In general, the chain should be so adjusted that the nozzle is approximately 16 inches off the ground.

The ultimate check to be certain this adjustment is correct takes place after the machine is running at operating speed. To make this check, speed up the engine. You should then be able to push the nozzle to the ground and pull it back up by using three fingers of one hand. If you can not operate the nozzle accordingly, either the chain should be re-adjusted or the spring tension of the boom assembly changed. A few minutes time in adjusting this correctly will ensure ease in operation.

For transport move the intake hose forward and lock the intake nozzle handle to the nozzle holder for transport.

Attach the spring holders to the rear door (facing out or to the back of the machine) with 3/8" bolt, nut & lockwashers. Next connect the door spring and chain from the spring holder to the chain holder on the top of the machine. Repeat for other side.

#### OPERATION:

1. NOTE: ENGINE IS SHIPPED WITHOUT OIL. Follow the engine manufacturers recommendations for oil and fuel recommendations and service. This should be read carefully to ensure maximum engine life.
2. Be certain the intake hose boom is properly adjusted according to the instructions found in an earlier section of this manual. In operation, you will note the boom will readily swing over a 10 foot path. If the pile of leaves is high, a short back and forth flicking motion will effectively eat into the pile of leaves. If the leaves are wet, it is best to move into the pile with a gulping motion. In this way, you will pick up a quantity and then move the hose slightly away from the pile to allow the leaves to rapidly flush through.
3. If the leaves are dry - in most cases we recommend running the truck loader at approximately half throttle. This will help reduce small particles of debris from escaping through the exhaust screen. When the leaves are wet or partially frozen, we recommend running the machine at full throttle.
4. NEVER USE YOUR GIANT-VAC TRUCK LOADER TO PICK UP SAND OR STONES. Debris like this is very abrasive and can damage the impeller and blower housing.
5. When the receiver box is full, stop engine and move the intake hose nozzle forward and lock for transport. The machine is now ready to go to the dump.
6. Never run or operate your Giant-Vac Truck Loader unless it is completely connected to the receiver box and the intake hose is installed.

SAFETY AND OPERATING INSTRUCTIONS  
FOR GIANT-VAC LEAF LOADERS

**CAUTION**  
ROTATING PARTS

1. BEFORE OPERATING - READ OPERATORS MANUAL FOR OPERATING AND SAFETY INSTRUCTIONS.
2. DO NOT OPERATE WITH ANY GUARDS OR COMPONENT PARTS REMOVED FROM UNIT.
3. BEFORE MAKING ANY ADJUSTMENTS OR REPAIRS, STOP ENGINE AND REMOVE SPARK PLUG WIRES ON GAS ENGINES - ON DIESEL ENGINE BE SURE ENGINE KILL SWITCH IS ACTIVATED.
4. WHILE IN OPERATION, KEEP ALL PARTS OF BODY AWAY FROM INTAKE AND EXHAUST SECTIONS.
5. WHEN OPERATING MACHINE, KEEP PEOPLE AND PETS A SAFE DISTANCE AWAY.

TRAINING:

1. Regard your Giant-Vac Leaf Loader as a piece of power equipment and teach this regard to all who operate this unit.
2. Never allow children or young teen-agers to operate the Giant-Vac Leaf Loader.
3. Be sure you know how to stop the engine at a MOMENT'S NOTICE.
4. Instruct children to keep away from the area of operation at all times.

PREPARATION:

1. Before starting operation, clear the entire work area of all debris that could catch on/or be thrown by the Giant-Vac Leaf Loader.
2. Unless there is very good artificial light, use only during the daylight hours.
3. Fill the Giant-Vac Leaf Loader fuel tank outdoors. Avoid spilling fuel and do not fill the tank while engine is running or while you are smoking.

OPERATION:

1. Do not operate with any guards or component parts removed from unit.
2. Before making any adjustments or repairs, stop engine and remove the spark plug wire on gas engine - on diesel engines be sure engine kill switch is activated.
3. While in operation, keep all parts of body away from intake and exhaust sections.

4. When operating machine, keep people and pets a safe distance away.
5. Follow the engine manufacturer's recommendations for safe operation.
6. Use caution in selecting your cleaning pattern.
7. The Giant-Vac Leaf Loader is designed to be used in connection with a dump truck that has a receiver box installed. Be sure the receiver box is of adequate construction to withstand the high velocity and force of the incoming debris. NEVER run or operate your Giant-Vac Leaf Loader unless it is completely connected to a receiver box and the intake hose is installed.
8. Never allow another person to ride or stand on the Giant-Vac Leaf Loader. NEVER allow another person to ride, sit or stand on the towing vehicle other than in the drivers cab of the towing vehicle.
9. Make sure the operator of the towing vehicle has the operator of the Giant-Vac Leaf Loader in full view at all times. Also when operating a Giant-Vac Leaf Loader, instruct the hose operator to stay to the side of the Leaf Loader - never in front or behind.

## WARRANTY

GIANT-VAC MFG. COMPANY INCORPORATED, here-in-after called Giant-Vac, warrants each new Giant-Vac to the original retail purchaser of new Giant-Vac equipment to be free from manufacturing defects in normal service for a period of 90 days, unless it is used for rental purposes which limits the warranty to 30 days. This warranty does not apply to engines, tires or other parts that are manufactured and warranted by the manufacturer. Items such as bags, grass catchers, hoses and blades are not warranted, as these are considered expendable items. This warranty does not include equipment failures due to normal wear.

An obligation under this warranty is expressly limited to the replacement or repair at an authorized servicing Giant-Vac dealer, or at a point designated by us, of such parts or parts as such appear to us to have been defective. All defective parts have to be returned freight prepaid before credit is issued.

We shall not be liable for transportation charges in connection with the replacement or repair of defective parts.

This warranty does not apply to a Giant-Vac upon which repairs or alterations have been made by other except with our prior written approval.

We shall not be liable for consequential damages or contingent liabilities nor for the fitness of any Giant-Vac for any particular purpose.

We make no other express, implied or statutory warranty, nor is anyone authorized to make any in our behalf.

## PARTS LIST NO. 5775

REF. NO.	PART NO.	DESCRIPTION	POWER UNIT SECTION FOR MODELS		
			6500	6800	9800
1	10118	Motor frame	1		
1	10119	Motor frame		1	
1	10121	Motor frame			1
2	10043	Blower housing	1	1	
2	10075	Blower housing			1
3	31511	Shim plated	2	2	2
4	31512	Bolt 1/2" x 1 3/4"	4	4	4
5	31022	Nut 1/2"	4	4	4
6	31078	Lock washer 1/2"	4	4	4
7	31119	Flat washer 1/2"	8	8	8
8	21519	Impeller	1		
8	21520	Impeller		1	
8	21532	Impeller			1
9	31228	Impeller key	1		
9	31129	Impeller key		1	
9	31513	Impeller key			1
10	31514	Impeller bolt & lockwasher	1		
10	31515	Impeller bolt & lockwasher		1	
10	31516	Impeller bolt & lockwasher			1
11	20160	Intake flange 18"	1	1	
11	20179	Intake flange 18"			1
12	31022	Nut 1/2"	16	16	16
13	31078	Lock washer 1/2"	16	16	16
14	36175	P.T.O. clutch		1	
14	36177	P.T.O. clutch			1
15	23161	P.T.O. clutch handle		1	
15	23163	P.T.O. clutch handle			1
16	40103	Fuel tank	1	1	1
17	40123	Fuel tank strap	1	1	1
19	31517	Fuel cap	1	1	1
20	31022	Nut 1/2"	4	4	4
21	31078	Lock washer 1/2"	4	4	4
22	61044	Valve	1	1	1
23	23165	Valve handle	2	2	2
24	27199	Valve handle holder	2	2	2
25	31518	Wire set	1	1	1
26	31519	Micro switch	2	2	2
27	31520	Bolt, nut & lockwasher 5/16 x 1 3/4"	3	3	3
28	61045	Hose 1/2" x 23" (Jack)	1	1	1
29	61046	Hose 1/2" x 46" (Jack)	1	1	1
30	61047	Valve hose fitting	1	1	1
31	61048	Hose 1/2" x 63"	1	1	1
32	61049	Hose elbow fitting	1	1	1
33	61050	Hose 1/2" x 49"	1	1	1
34	24592	Exhaust stack & elbow	1	1	
34	24594	Exhaust stack & elbow			1
35	24595	Exhaust stack	1	1	1
36	31532	Exhaust stack gasket set	1	1	1
37	31021	Bolt 1/2" x 4 1/2"	3	3	3
38	31022	Nut 1/2"	3	3	3

PARTS LIST NO. 5755

POWER UNIT SECTION  
FOR MODELS

REF. NO.	PART NO.	DESCRIPTION	FOR MODELS		
			6500	6800	9800
39	31078	Lockwasher 1/2"	3	3	3
40	31119	Flat washer 1/2"	6	6	6
41	31097	Bolt 3/8" x 1 1/4"	8	8	8
42	31521	Nut 3/8"	8	8	8
43	31205	Flat washer 3/8"	16	16	16
44	31115	Lock washer 3/8"	8	8	8
45	61017	Cylinder 24"	1	1	1
46	27196	Cylinder bracket	1	1	1
47	27197	Bottom cylinder holder	1	1	1
48	31522	Top pin 7"	1	1	1
49	31523	Bolt, lock & flatwasher 1/2"	1	1	1
50	31524	Pin and clip	1	1	1
51	61051	Hose elbow fitting	2	2	2
52	31525	Bolt 1/2" x 5 1/2"	2	2	2
53	31526	Bolt 5/8" x 2"	4	4	4
54	31527	Lockwasher 5/8"	4	4	4
55	31528	Nut 5/8"	4	4	4
56	31529	Bottom pin 5"	1	1	1
57	31530	Spacers 1 1/4"	2	2	2
58	27198	Bottom jack plate	1	1	1
59	31523	Bolt, lock & flatwasher 1/2" x 1 1/4"	1	1	1
60	33135	Safety chain set	1	1	1
61	61043	Hydraulic motor & tank	1	1	1
62	31531	Cap for tank	1	1	1
63	34023	Intake hose 18" x 8"	1	1	1
64	34025	Hose clamp 18"	4	4	4
65	20158	Intake nozzle 18"	1	1	1
	39023	Engine Wisconsin 65HP	1		
	39030	Engine White 63HP		1	
	39031	Engine Ford 130HP			1

## PARTS LIST NO. 5755

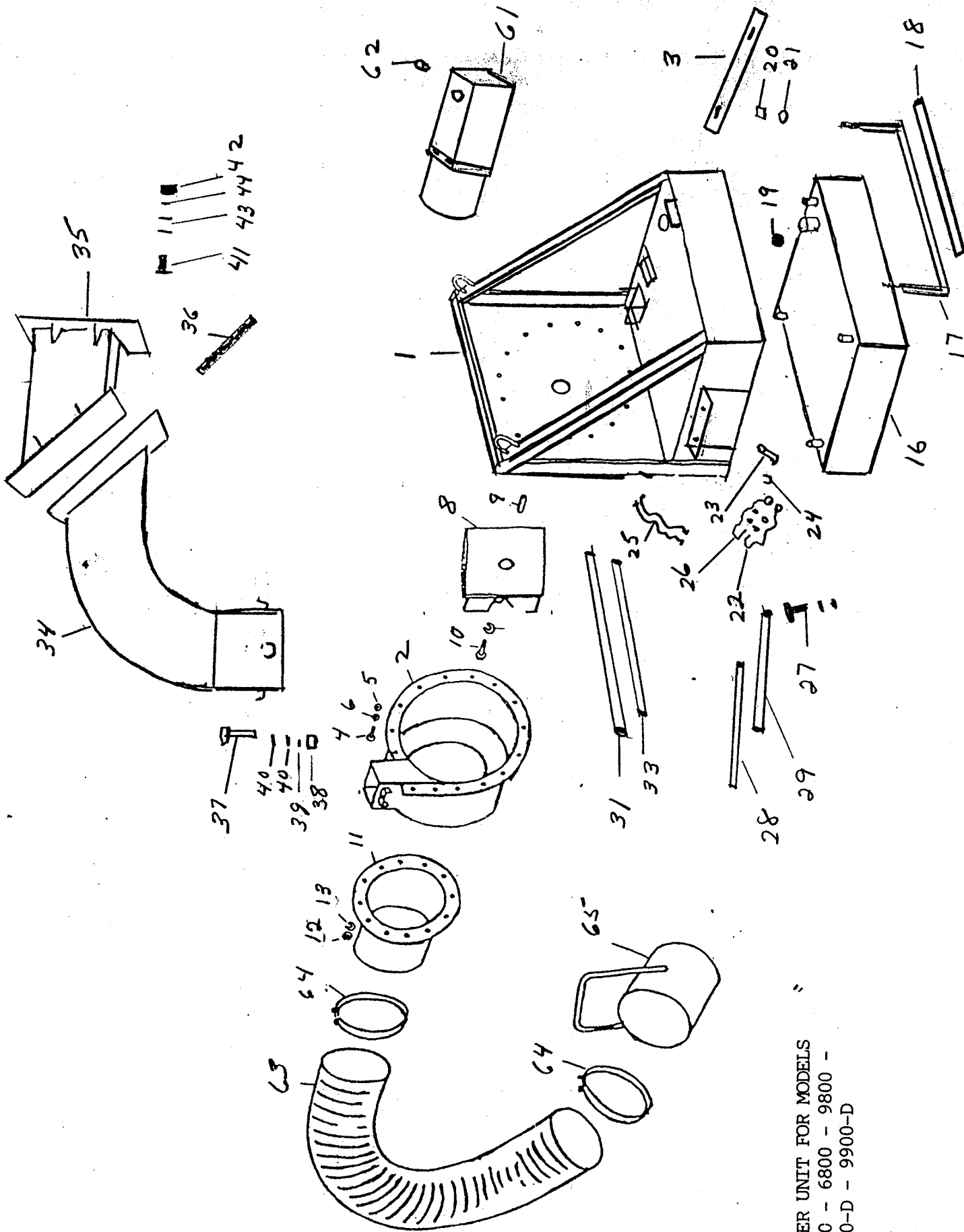
REF. NO.	PART NO.	DESCRIPTION	POWER UNIT SECTION FOR MODELS	
			6600-D	9900-D
1	10120	Motor frame	1	
1	10122	Motor frame		1
2	10043	Blower housing	1	
2	10075	Blower housing		1
3	31511	Shim plates	2	2
4	31512	Bolt 1/2" x 1 3/4"	4	4
5	31022	Nut 1/2"	4	4
6	31078	Lock washer 1/2"	4	4
7	31119	Flat washer 1/2"	8	8
8	21520	Impeller	1	
8	21532	Impeller		1
9	31129	Impeller key	1	
9	31513	Impeller key		1
10	31515	Impeller bolt & washer	1	
10	31516	Impeller bolt & lockwasher		1
11	20160	Intake flange 18"	1	
11	20179	Intake flange 18"		1
12	31022	Nut 1/2"	16	16
13	31078	Lockwasher 1/2"	16	16
14	36176	P.T.O. clutch	1	
14	36177	P.T.O. clutch		1
15	23162	P.T.O. clutch handle	1	
15	23163	P.T.O. clutch handle		1
16	40117	Fuel tank - diesel	1	1
17	40118	Fuel tank strap	1	1
18	40124	Fuel tank rubber strap (set)	1	1
19	31517	Fuel cap	1	1
20	31022	Nut 1/2"	4	4
21	31078	Lockwasher 1/2"	4	4
22	61044	Valve	1	1
23	23165	Valve handle	2	2
24	27199	Valve handle holder	2	2
25	31518	Wire set	1	1
26	31519	Micro switch	2	2
27	31520	Bolt, nut & lockwasher 5/16" x 1 3/4"	3	3
28	61045	Hose 1/2" x 23" (Jack)	1	1
29	61046	Hose 1/2" x 46" (Jack)	1	1
30	61047	Valve hose fitting	1	1
31	61048	Hose 1/2" x 63"	1	1
32	61049	Hose elbow fitting	1	1
33	61050	Hose 1/2" x 49"	1	1
34	24593	Exhaust stack & elbow	1	
34	24594	Exhaust stack & elbow		1
35	24595	Exhaust stack	1	1
36	31532	Exhaust stack gasket set	1	1
37	31021	Bolt 1/2" x 4 1/2"	3	3
38	31022	Nut 1/2"	3	3
39	31078	Lock washer 1/2"	3	3
40	31119	Flat washer 1/2"	6	6
41	31097	Bolt 3/8" x 1 1/4"	8	8
42	31521	Nut 3/8"	8	8



PARTS LIST NO. 5775

REF. NO.	PART NO.	DESCRIPTION	POWER UNIT SECTION FOR MODELS	
			6600-D	9900-D
43	31205	Flat washer 3/8"	16	16
44	31115	Lock washer 3/8"	8	8
45	61017	Cylinder 24"	1	1
46	27196	Cylinder bracket	1	1
47	27197	Bottom cylinder holder	1	1
48	31522	Top pin 7"	1	1
49	31523	Bolt, lock & flatwasher 1/2"	1	1
50	31524	Pin and clip	1	1
51	61051	Hose elbow fitting	2	2
52	31525	Bolt 1/2" x 5 1/2"	2	2
53	31526	Bolt 5/8" x 2"	4	4
54	31527	Lockwasher 5/8"	4	4
55	31528	Nut 5/8"	4	4
56	31529	Bottom Pin 5"	1	1
57	31530	Spacers 1 1/4"	2	2
58	27198	Bottom jack plate	1	1
59	31523	Bolt, lock & flatwasher 1/2" x 1 1/4"	1	1
60	33135	Safety chain set	1	1
61	61043	Hydraulic motor & tank	1	1
62	31531	Cap for tank	1	1
63	34023	Intake hose 18" x 8"	1	1
64	34025	Hose clamp 18"	4	4
65	20158	Intake nozzle 18"	1	1
	39043	Engine White Diesel 61HP	1	
	39044	Engine White Diesel 90HP		1

ALL PRICES AND SPECIFICATIONS SUBJECT TO CHANGE WITHOUT NOTICE.

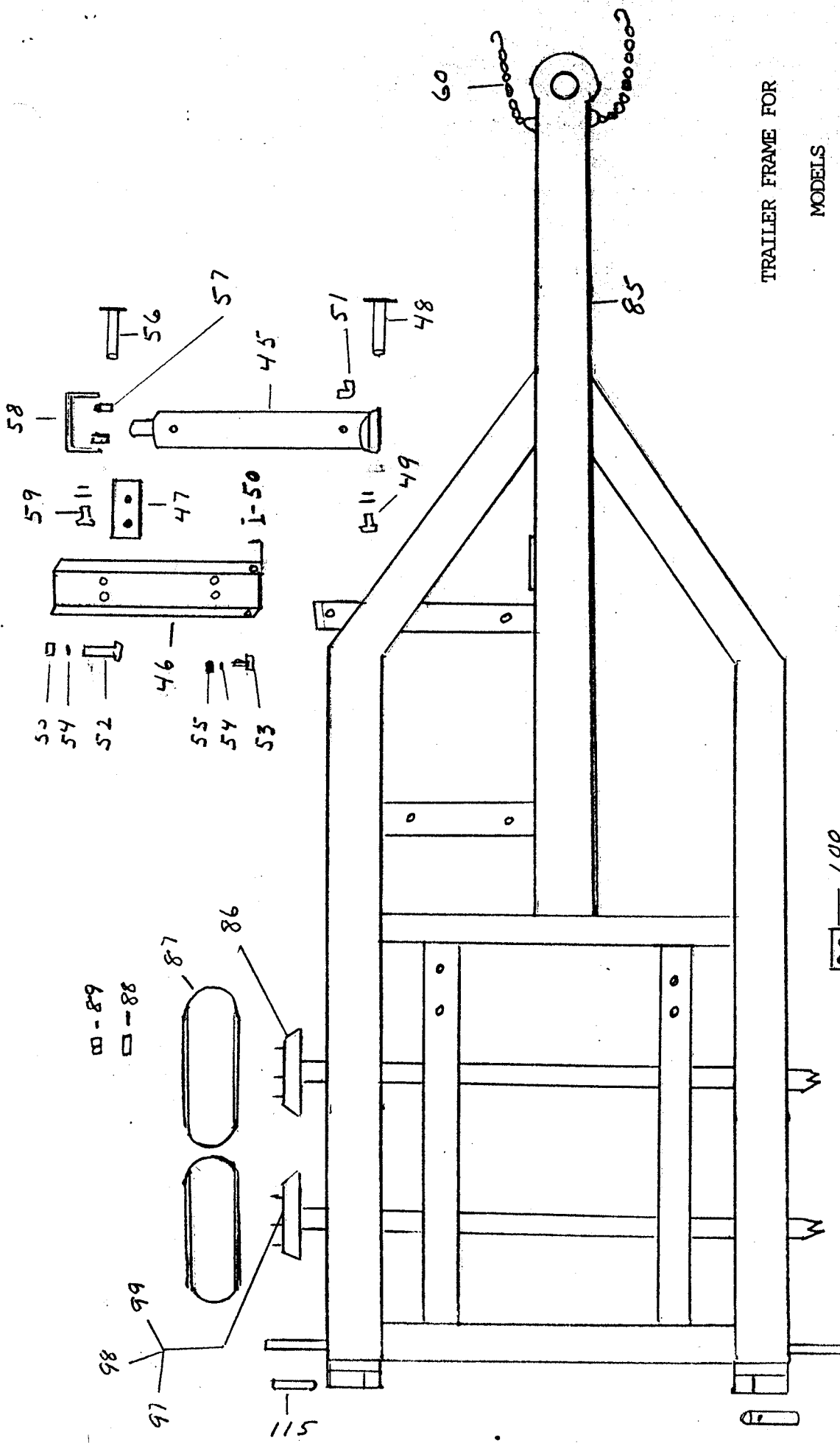


POWER UNIT FOR MODELS  
 6500 - 6800 - 9800 -  
 6600-D - 9900-D

## PARTS LIST NO. 5755

REF. NO.	PART NO.	DESCRIPTION	BOX AND FRAME SECTION FOR MODELS		
			14 yd.	20 yd.	25 yd.
85	27182	Trailer frame	1		
85	27183	Trailer frame		1	
85	27184	Trailer frame			1
86	33129	Axle and spring assembly	2	3	3
87	33125	Tire and Rim 800 x 14.5	4	6	6
88	33130	Rim locks	20	30	30
89	33131	Lug nuts	20	30	30
90	27185	Leaf box 14 yd.	1		
90	27186	Leaf box 20 yd.		1	
90	27187	Leaf box 25 yd.			1
91	27188	Top screen 14 yd.	1		
91	27189	Top screen 20 yd.		1	
91	27190	Top screen 25 yd.			1
92	27191	Hoist box brackets	2	2	2
93	61056	Hoist assembly	1	1	1
94	61052	Hose 1/2" x 123"	1		
94 a	61053	Hose 1/2" x 169"		1	1
94	61054	Hose 1/2" x 143"	1		
94 A	61055	Hose 1/2" x 191"		1	1
95	31499	Light, red cats eye	7	7	7
95 a	31501	Lens for light	7	7	7
96	31500	Light, amber cats eye	4	4	4
96 a	31502	Lens for light	4	4	4
97	33132	Dust covers	4	6	6
98	33133	Seals	8	12	12
99	33134	Bearing	6	12	12
100	27192	Pivot brackets	4	4	4
101	31503	Hoist pin	1	1	1
102	23164	Door lock handle	2	2	2
103	31504	Door lock handle bolt	2	2	2
104	27195	Door lock side piece	4	4	4
105	31505	Bolt & lock nut 1/2" x 1 1/4"	8	8	8
106	27193	Back door	1	1	1
107	23160	Back door rod	1	1	1
108	31506	Door gasket (set)	1	1	1
110	37018	Door spring	2	2	2
111	31507	Door spring chain	2	2	2
112	31508	Bolt & lock nut 3/8" x 3"	2	2	2
113	31509	Bolt, nut & lockwasher 3/8" x 1"	8	8	8
114	27194	Spring holder	2	2	2
115	31510	Tail light	2	2	2
116	27200	Door latch holder	2	2	2

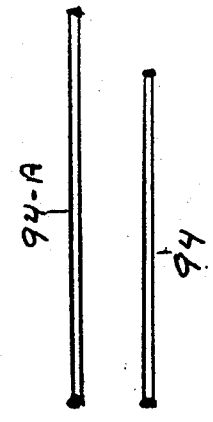
PRICES AND SPECIFICATIONS SUBJECT TO CHANGE WITHOUT NOTICE.



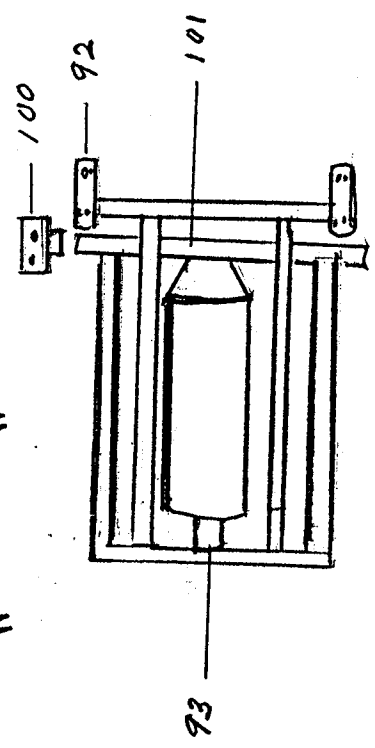
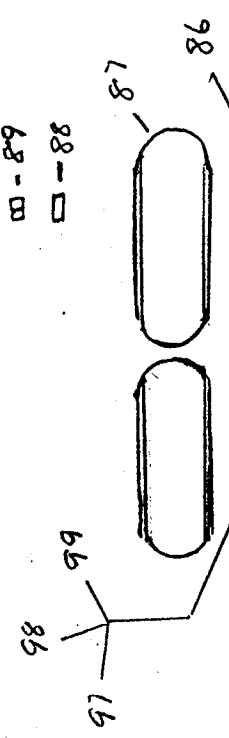
TRAILER FRAME FOR

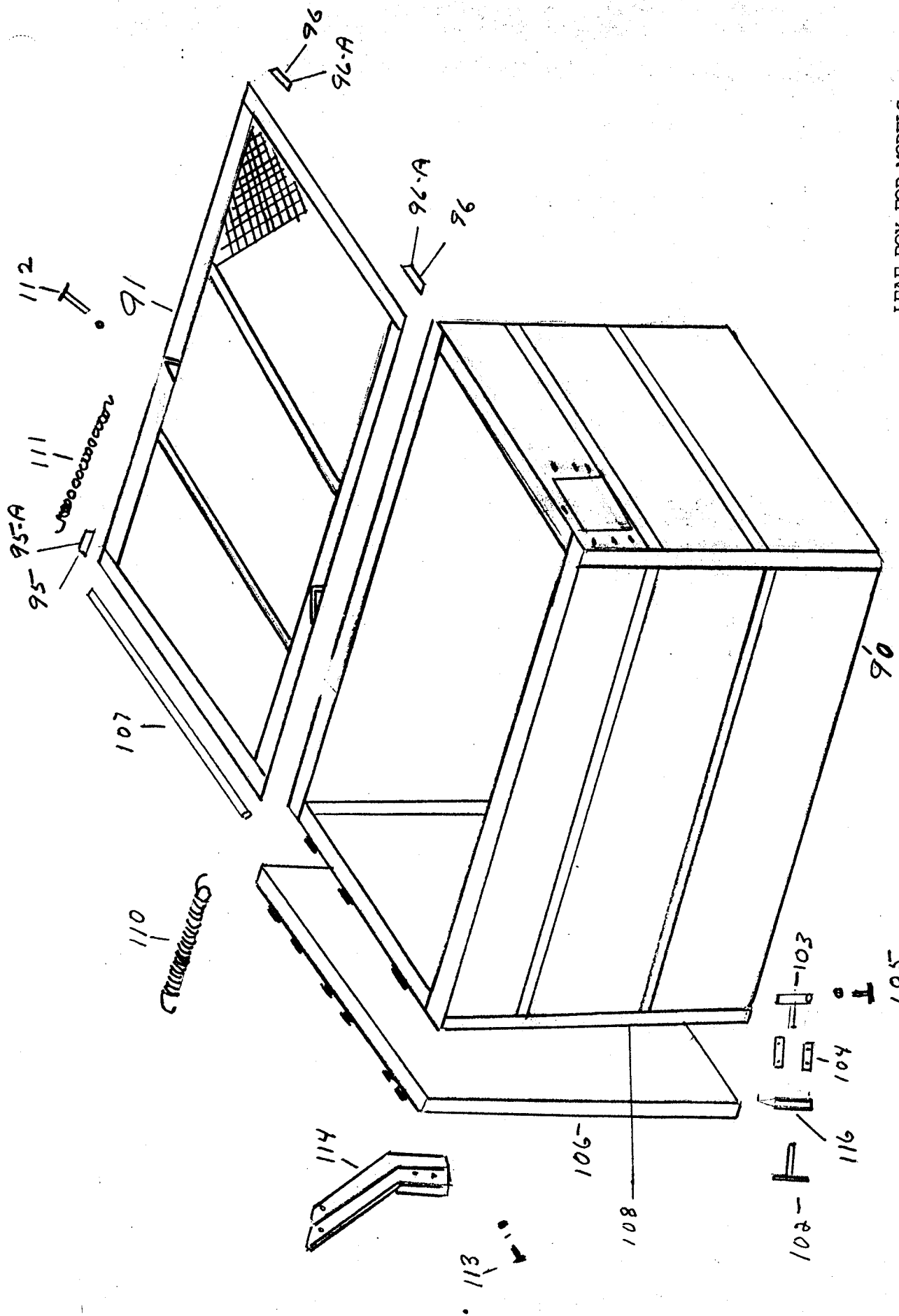
MODELS

- 6500 - 6800 - 9800
- TR-14 - 20 - 25
- 6600-D - 9900-D
- TR-14 - 20 - 25



- - 89
- - 88





LEAF BOX FOR MODELS

6500 - 6800 - 9800

TR - 14 - 20 - 25

6600-D - 9900-D

TR - 14 - 20 - 25

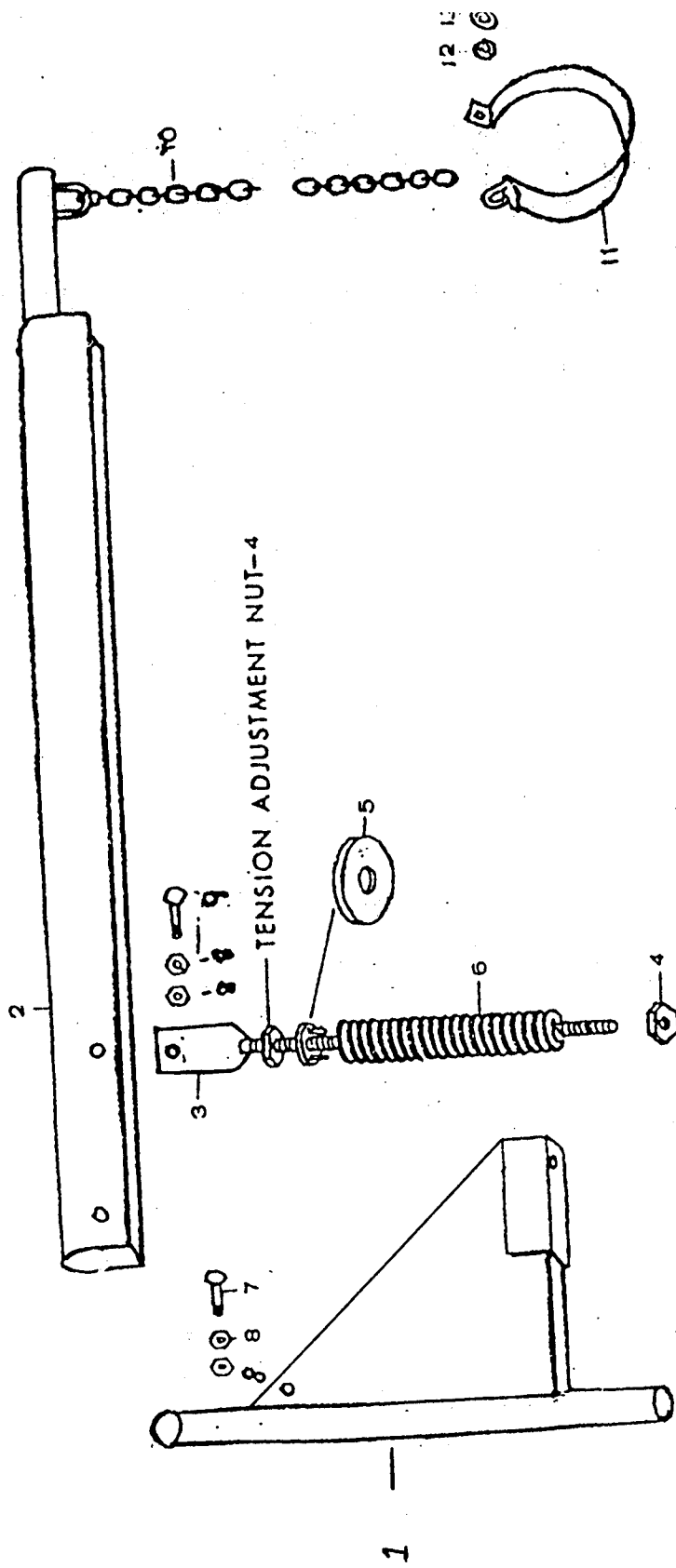
## PARTS LIST NO. 5775

HOSE SUPPORT BOOM  
FOR  
GIANT-TRUCK LOADERS

REF. NO.	PART NO.	DESCRIPTION	6500		6600-D
			6800 & 9800	9900-D	9900-D
1	40107	Boom Vertical Member	1		1
2	40106	Boom Horizontal Member	1		1
3	40108	Threaded spring guide	1		1
4	31330	Hex nut 5/8"	1		1
5	31331	Flat washer 5/8"	2		2
6	31332	Boom coil spring	1		1
7	31333	Hex head bolt 1/2" x 3"	1		1
8	31334	Jam nut 1/2"	4		4
9	31335	Hex head bolt 1/2" x 4"	1		1
10	31440	Chain	1		1
11	40112	Hose support band	1		1
12	31141	Hex bolt 5/16" x 3"	1		1
13	31142	Hex head nut 5/16"	2		2
14	31143	Flat washers 5/16"	2		2

ALL PRICES AND SPECIFICATIONS SUBJECT TO CHANGE WITHOUT NOTICE.

# HOSE SUPPORT BOOM



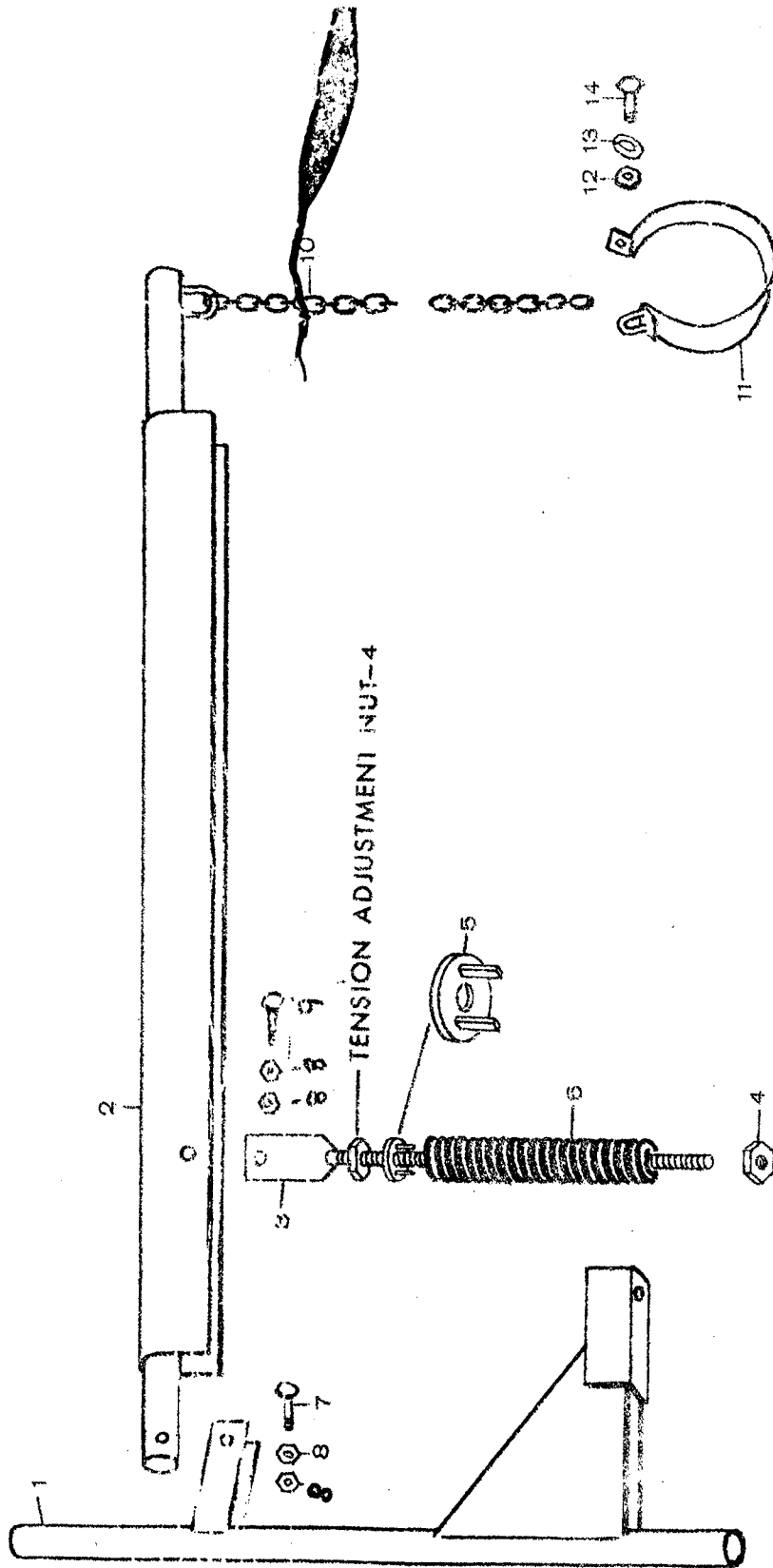
PARTS LIST NO. 5722

HOSE SUPPORT BOOM  
FOR  
GIANT-TRUCK LOADERS

REF. NO.	PART NO.	DESCRIPTION	MODELS				
			1201	2001	3000	6500	6800
1	40106	Boom Horizontal Member	1	1	1	1	1
2	40107	Boom Vertical Member	1	1	1	1	1
3	40108	Threaded Spring Guide	1	1	1	1	1
4	31330	Hex Nut 5/8"	2	2	2	2	2
5	31331	Flat Washer 5/8"	2	2	2	2	2
6	31332	Boom Coil Spring	1	1	1	1	1
7	31333	Bolt Hex Head 1/2" x 3"	1	1	1	1	1
8	31334	Jam Nut 1/2"	4	4	4	4	4
9	31335	Bolt Hex Head 1/2" x 4"	1	1	1	1	1
10	31140	Chain	1	1	1	1	1
11	40109	Hose Support Band	1				
11	40109	Hose Support Band		1			
11	40109	Hose Support Band			1		
11	40109	Hose Support Band				1	
11	40109	Hose Support Band					1
12	31141	Hex Bolt 5/16" x 3"	1	1	1	1	1
13	31142	Nut Hex Head 5/16"	2	2	2	2	2
14	31143	Flat Washers 5/16"	2	2	2	2	2



# HOSE SUPPORT BOOM



SHEET  
3A

D-82968