

ASSEMBLY AND OPERATIONS INSTRUCTIONS FOR MODEL 3000FM GIANT-TRUCK LOADER

YOUR SHIPMENT OF A 3000FM GIANT-TRUCK LOADER SHOULD CONSIST OF THE FOLLOWING PARTS:

- 1 - POWER UNIT AND BLOWER HOUSING ASSEMBLY WITH FORWARD LEVELING SUPPORT STANDS
- 2 - AFT HANGER BRACKET FOR SNOW-PLOW HITCH ADAPTOR AND CONTAINING LEVELING JACK BRACKETS. THIS, IN ALL PROBABILITY WILL BE FASTENED TO YOUR POWER UNIT ON DELIVERY
- 3 - TWO LEVELING JACKS TO BE INSTALLED ON ABOVE
- 4 - EXHAUST CHUTE TO FASTEN TO HOUSING
- 5 - TWO FLANGE SECTIONS TO FIT INTO EXHAUST CHUTE
- 6 - SHORT LENGTH OF 12 INCH FLEXIBLE HOSE TO CONNECT THE TWO FLANGED SECTIONS
- 7 - TWO 12 INCH HOSE CLAMPS FOR ABOVE
- 8 - EXHAUST SECTION TO BOLT TO TRUCK
- 9 - FLANGE SECTION TO CONTAIN NO. 5 TO BE WELDED TO EXHAUST SECTION NO. 8
- 10 - INTAKE FLANGE
- 11 - 7 FOOT LENGTH OF INTAKE HOSE WITH WEAR STRIP
- 12 - INTAKE NOZZLE
- 13 - BOOM ASSEMBLY
- 14 - HOSE SUPPORT BAND
- 15 - LENGTH OF CHAIN TO CONNECT HOSE SUPPORT BAND TO BOOM NECESSARY HARDWARE FOR ASSEMBLY
- 16 - ENGINE MANUAL

INSPECT PARTS FOR ANY DAMAGE THAT MIGHT HAVE OCCURRED IN SHIPPING. IF ANY IS FOUND, OR ANY SHORTAGES NOTED, NOTIFY THE TRANSPORT CARRIER WHO DELIVERED YOUR MACHINE AS HE IS RESPONSIBLE FOR THE DAMAGE AND IS THE ONLY ONE TO MAKE ANY ADJUSTMENTS. BEFORE LEAVING OUR PLANT, ALL COMPONENTS WERE COMPLETELY INSPECTED. ALL MANUFACTURING DIMENSIONS ARE HELD TO CLOSE TOLERANCES, AND THUS, YOU WILL HAVE LITTLE DIFFICULTY IN ASSEMBLING YOUR GIANT-TRUCK LOADER IF YOU FOLLOW THESE STEPS.

ENGINE INSTRUCTIONS:

AN ENGINE MANUAL IS SUPPLIED WITH EACH SHIPMENT. THIS SHOULD BE READ CAREFULLY. INSTRUCTIONS ON OIL CHANGES SHOULD BE CAREFULLY NOTED TO ENSURE MAXIMUM ENGINE LIFE.

WE RECOMMEND THAT THE ENGINE BE RUN AT A FAST IDLE FOR AT LEAST 6 HOURS. FOLLOWING THIS, THE ENGINE SHOULD BE RE-TUNED. A GOOD CHECK SHOULD INCLUDE THE CARBURETOR AND TIMING ADJUSTMENTS.

THE ENGINE IS WARRANTED BY THE ENGINE MANUFACTURER. PLEASE BE CERTAIN TO MAIL TO THEM, THE WARRANTEE CARD, IMMEDIATELY. IF ANY ENGINE PROBLEMS EXIST, PLEASE CONTACT THEIR NEAREST SERVICE CENTER AS ONLY THEY CAN AUTHORIZE ANY WARRANTEE CLAIMS.

ASSEMBLING POWER UNIT TO TRUCK:

LEVEL THE POWER UNIT WITH THE FOUR SUPPORT STANDS TO THE DESIRED HEIGHT FOR OPERATING CONDITIONS. NEXT, MOVE THE TRUCK - WITH THE PLOW HITCH MOUNTED TO THE POWER UNIT. FASTEN LUGS IN THE PLOW HITCH - WHICH ARE THEN WELDED TO THE AFT HANGER BRACKET ON THE POWER UNIT.

ASSEMBLING POWER UNIT TO TRUCK - CONTINUATION:

A CHAIN SHOULD THEN BE FASTENED TO YOUR LIFTING CYLINDER ARM AND CONNECTED TO THE TWO RINGS FOUND ON EITHER SIDE OF THE ENGINE FRAME. THIS SHOULD BE DONE WHEN THE CYLINDER IS AT LEAST PARTIALLY DOWN IN ORDER THAT THE UNIT MAY LATER BE RAISED. IT IS GOOD PRACTICE TO ALSO CONNECT TWO "DEAD MAN" CHAINS IN ORDER TO ENSURE YOUR GIANT-LOADER STAYING IN THIS POSITION WHEN IN OPERATION.

ASSEMBLING EXHAUST SECTION:

THE BLOWER HOUSING SHOULD BE BOLTED TO THE ENGINE BASE AT 30° DEGREES FROM A TRUE VERTICAL POSITION. IF YOUR HOUSING IS NOT ASSEMBLED IN THIS MANNER, IT CAN READILY BE CHANGED BY REMOVING THE BOLTS HOLDING IT TO THE ENGINE BASE AND ROTATING IT ONE SET OF HOLES.

THE EXHAUST SECTIONS SHOULD NEXT BE INSTALLED. THIS IS SECURED BY 4 - 3/8 INCH BOLTS THROUGH THE CORNER CLIPS AND 2 - 1/2 INCH BOLTS ON THE SIDE CLIPS. THE 1/2 INCH BOLTS SHOULD BE SECURELY LOCKED AS A SAFETY PRECAUTION.

THE FLANGED SECTION THAT MOUNTS TO THE LEAF COLLECTOR BOX SHOULD NEXT BE INSTALLED IN LINE WITH THE EXHAUST SECTION. THIS IS SUPPLIED IN A LONG LENGTH AND MAY HAVE TO BE CUT TO SUIT YOUR CONDITIONS. TO DETERMINE THIS, MEASURE THE DISTANCE BETWEEN THE END OF THE EXHAUST DUCT, CONNECTED TO YOUR POWER UNIT, AND THE EXHAUST SECTION, CONNECTED TO YOUR TRUCK. THIS DISTANCE SHOULD BE BETWEEN 30 TO 36 INCHES.

AFTER CUTTING THIS TO THE PROPER LENGTH, WELD ON THE FLANGE SECTION WHICH IS SIMILAR TO THE ONE WELDED ON TO THE EXHAUST SECTION WHICH IS NOW MOUNTED ON YOUR POWER UNIT.

CUT THE LENGTH OF FLEXIBLE FABRIK HOSE 3 TO 4 INCHES SHORTER THAN THE DISTANCE BETWEEN THE EXHAUST FLANGES. THIS LENGTH SHOULD BE MEASURED WHILE THE HOSE IS STRETCHED TIGHT.

NOW, SLIDE THE TWO FLANGED SECTIONS INTO BOTH RECEPTACLES ON THE EXHAUST SECTIONS. NEXT, INSTAL THE FLEXIBLE HOSE OVER THESE AND FASTEN BY MEANS OF THE STAINLESS STEEL HOSE CLAMPS. BE CERTAIN THE HOSE IS STRETCHED TIGHT. IF IT IS NOT STRETCHED TIGHT, DEBRIS WILL COLLECT IN THIS SECTION.

BOOM ASSEMBLY:

THE BOOM SHOULD THEN BE INSTALLED IN THE BOOM HOLDER. THIS IS DONE BY SLIDING THE VERTICAL ARM INTO THE UPPER BRACKET AND THEN DROPPING DOWN IN TO THE LOWER BRACKET. THE OUTRIGGER ARM IS NEXT INSTALLED AND FASTENED WITH A 1/2 INCH BOLT AND LOCK NUTS. THE THREADED SUPPORT SPRING ARM IS FASTENED - WHICH COMPLETES THIS ASSEMBLY.

HOSE ASSEMBLY AND POSITIONING:

THE HOSE IS NEXT INSTALLED AND SECURED TO THE FLANGE BY MEANS OF A STAINLESS STEEL HOSE CLAMP. FOLLOWING THIS, THE BOOM HOSE SUPPORT BAND IS SLIPPED OVER THE HOSE. THIS SHOULD BE SECURED ABOUT 2 FEET FROM THE END OF THE HOSE. THE PICK-UP NOZZLE IS NEXT INSTALLED AND FASTENED WITH A SECOND HOSE CLAMP.

A CHAIN CONNECTS THE HOSE SUPPORT BAND TO THE END OF THE BOOM. IT IS VITALLY IMPORTANT THAT THIS CHAIN IS ADJUSTED CORRECTLY FOR EASE OF OPERATION. IN GENERAL, THE CHAIN SHOULD BE SO ADJUSTED THAT THE NOZZLE IS APPROXIMATELY

HOSE ASSEMBLY AND POSITIONING - CONTINUATION:
12 INCHES OFF THE GROUND.

THE ULTIMATE CHECK TO BE CERTAIN THIS ADJUSTMENT IS CORRECT TAKES PLACE AFTER THE MACHINE IS RUNNING AT OPERATING SPEED. TO MAKE THIS CHECK, SPEED UP THE ENGINE. YOU SHOULD THEN BE ABLE TO PUSH THE NOZZLE TO THE GROUND AND PULL IT BACK UP BY USING THREE FINGERS OF ONE HAND. IF YOU CANNOT OPERATE THE NOZZLE ACCORDINGLY, EITHER THE CHAIN SHOULD BE RE-ADJUSTED OR THE SPRING TENSION OF THE BOOM ASSEMBLY, CHANGED. A FEW MINUTES TIME IN ADJUSTING THIS CORRECTLY WILL ENSURE EASE IN OPERATION.

OPERATION:

YOUR 3000FM GIANT-TRUCK LOADER IS A VERY EASY MACHINE TO OPERATE. BE CERTAIN THE BOOM IS PROPERLY ADJUSTED, ACCORDING TO THE INSTRUCTIONS FOUND IN AN EARLIER SECTION OF THIS MANUAL.

IN OPERATION, YOU WILL NOTE THE BOOM WILL READILY SWING OVER A 10 FOOT PATH. THIS ALLOWS YOU TO READILY CLEAN A WIDE AREA, EFFICIENTLY. IF THE PILE IS HIGH, A SHORT BACK AND FORTH FLICKING MOTION WILL EFFECTIVELY EAT INTO THE PILE OF LEAVES.

IF THE LEAVES ARE WET, IT IS BEST TO MOVE INTO THE PILE WITH A "GULPING" MOTION. IN THIS WAY, YOU WILL PICK UP A QUANTITY AND THEN MOVE THE HOSE SLIGHTLY AWAY FROM THE PILE TO ALLOW THE LEAVES TO RAPIDLY FLUSH THROUGH.

UNLOADING AND UNCOUPLING GIANT-LOADER:

WHEN THE LOAD IS READY TO BE DUMPED, THE FOLLOWING SHOULD BE PERFORMED. RAISE UP ON THE CYLINDER HOIST. THIS PUTS SOME SLACK IN THE EXHAUST HOSE SECTION. NEXT, SLIDE ONE OF THE FLANGE SECTIONS OUT, AND THE TRUCK IS NOW READY TO DUMP.

IF MORE THAN ONE TRUCK IS TO BE USED, YOUR GIANT-LOADER CAN BE READILY DISCONNECTED BY PERFORMING THE FOLLOWING:

WHILE THE CYLINDER HOIST IS RAISED, DROP DOWN THE TWO FORWARD KICK STANDS. UNCOUPLE THE EXHAUST HOSE AND THEN LOWER THE CYLINDER. NEXT, LOWER THE TWO AFT SCREW JACKS AND UNCOUPLE. YOUR GIANT-LOADER IS NOW READY TO MOUNT ON THE NEXT TRUCK.

DEBRIS BOXES:

YOUR GIANT-LOADERS CAN READILY BE USED IN CONJUNCTION WITH A DUMP TRUCK OR GARBAGE PACKER. THE FOLLOWING ARE A FEW THOUGHTS WHICH WE HOPE MIGHT BE HELPFUL IN CONSTRUCTING THESE BOXES.

TO BEGIN WITH, IT IS IMPORTANT TO HAVE AN ADEQUATE SCREENED SECTION FOR ALLOWING THE TREMENDOUS VOLUME OF AIR THAT YOUR GIANT-LOADER GULPS UP EACH MINUTE, TO ESCAPE. AS A MATTER OF FACT, WE STRONGLY RECOMMEND THE ENTIRE TOP BE COVERED WITH SCREENING. ONE INCH EXPANDED MESH OR 1/4 SQUARE WIRE MAKES AN EXCELLENT SCREEN. THE THEORY BEHIND THIS IS QUITE SIMPLE. FOR EXAMPLE, IF 10 SQUARE FEET OF EXHAUST SECTION WOULD PRODUCE A 100 MILE PER HOUR EXHAUST VELOCITY, THIS WOULD BE CUT DOWN TO A 10 MILE PER HOUR EXHAUST VELOCITY IF THE OPENING WAS INCREASED TO 100 SQUARE FEET.

IF A DUMP TRUCK IS USED, THE COLLECTION BOX IS GENERALLY FABRICATED OUT OF PLYWOOD AND ANGLE IRON. QUITE OFTEN A 3 INCH ANGLE IRON FRAME IS FIRST FABRICATED. THE SIDES ARE LINED WITH 3/4 INCH THICK EXTERIOR TYPE PLYWOOD.

ASSEMBLY AND OPERATIONS INSTRUCTIONS FOR MODEL 650CFM GIANT-TRUCK LOADER

YOUR SHIPMENT OF A 650CFM GIANT-TRUCK LOADER SHOULD CONSIST OF THE FOLLOWING PARTS:

- 1 - POWER UNIT AND BLOWER HOUSING ASSEMBLY WITH FORWARD LEVELING SUPPORT STANDS
- 2 - AFT HANGER BRACKET FOR SNOW PLOW HITCH ADAPTOR AND CONTAINING LEVELING JACK BRACKETS. THIS, IN ALL PROBABILITY WILL BE FASTENED TO YOUR POWER UNIT ON DELIVERY
- 3 - TWO LEVELING JACKS TO BE INSTALLED ON ABOVE
- 4 - EXHAUST CHUTE TO FASTEN TO HOUSING
- 5 - TWO FLANGE SECTIONS TO FIT INTO EXHAUST CHUTE
- 6 - SHORT LENGTH OF 12 INCH FLEXIBLE HOSE TO CONNECT THE TWO FLANGED SECTIONS
- 7 - TWO 12 INCH HOSE CLAMPS FOR ABOVE
- 8 - EXHAUST SECTION TO BOLT TO TRUCK
- 9 - FLANGE SECTION TO CONTAIN NO. 5 TO BE WELDED TO EXHAUST SECTION NO. 8
- 10 - INTAKE FLANGE
- 11 - 7 FOOT LENGTH OF INTAKE HOSE WITH WEAR STRIP
- 12 - INTAKE NOZZLE
- 13 - BOOM ASSEMBLY
- 14 - HOSE SUPPORT BAND
- 15 - LENGTH OF CHAIN TO CONNECT HOSE SUPPORT BAND TO BOOM NECESSARY HARDWARE FOR ASSEMBLY
- 16 - ENGINE MANUAL

INSPECT PARTS FOR ANY DAMAGE THAT MIGHT HAVE OCCURRED IN SHIPPING. IF ANY IS FOUND, OR ANY SHORTAGES NOTED, NOTIFY THE TRANSPORT CARRIER WHO DELIVERED YOUR MACHINE AS HE IS RESPONSIBLE FOR THE DAMAGE AND IS THE ONLY ONE TO MAKE ANY ADJUSTMENTS. BEFORE LEAVING OUR PLANT, ALL COMPONENTS WERE COMPLETELY INSPECTED. ALL MANUFACTURING DIMENSIONS ARE HELD TO CLOSE TOLERANCES, AND THUS, YOU WILL HAVE LITTLE DIFFICULTY IN ASSEMBLING YOUR GIANT-TRUCK LOADER IF YOU FOLLOW THESE STEPS.

ENGINE INSTRUCTIONS:

AN ENGINE MANUAL IS SUPPLIED WITH EACH SHIPMENT. THIS SHOULD BE READ CAREFULLY. INSTRUCTIONS ON OIL CHANGES SHOULD BE CAREFULLY NOTED TO ENSURE MAXIMUM ENGINE LIFE.

WE RECOMMEND THAT THE ENGINE BE RUN AT A FAST IDLE FOR AT LEAST 6 HOURS. FOLLOWING THIS, THE ENGINE SHOULD BE RE-TUNED. A GOOD CHECK SHOULD INCLUDE THE CARBURETOR AND TIMING ADJUSTMENTS. THE GOVERNOR SHOULD BE SET AT APPROXIMATELY 50 R.P.M. UNDER TOP SPEED.

THE ENGINE IS WARRANTED BY THE ENGINE MANUFACTURER. PLEASE BE CERTAIN TO MAIL TO THEM, THE WARRANTEE CARD, IMMEDIATELY. IF ANY ENGINE PROBLEMS EXIST, PLEASE CONTACT THEIR NEAREST SERVICE CENTER AS ONLY THEY CAN AUTHORIZE ANY WARRANTEE CLAIMS.

ASSEMBLING POWER UNIT TO TRUCK:

LEVEL THE POWER UNIT WITH THE FOUR SUPPORT STANDS TO THE DESIRED HEIGHT FOR OPERATING CONDITIONS. NEXT, MOVE THE TRUCK - WITH THE PLOW HITCH MOUNTED TO THE POWER UNIT. FASTEN LUGS IN THE PLOW HITCH - WHICH ARE THEN WELDED TO THE AFT HANGER BRACKET ON THE POWER UNIT.

ASSEMBLING POWER UNIT TO TRUCK - CONTINUATION:

A CHAIN SHOULD THEN BE FASTENED TO YOUR LIFTING CYLINDER ARM AND CONNECTED TO THE TWO RINGS FOUND ON EITHER SIDE OF THE ENGINE FRAME. THIS SHOULD BE DONE WHEN THE CYLINDER IS AT LEAST PARTIALLY DOWN IN ORDER THAT THE UNIT MAY LATER BE RAISED. IT IS GOOD PRACTICE TO ALSO CONNECT TWO "DEAD MAN" CHAINS IN ORDER TO ENSURE YOUR GIANT-LOADER STAYING IN THIS POSITION WHEN IN OPERATION.

ASSEMBLING EXHAUST SECTION:

THE BLOWER HOUSING SHOULD BE BOLTED TO THE ENGINE BASE AT 30° DEGREES FROM A TRUE VERTICAL POSITION. IF YOUR HOUSING IS NOT ASSEMBLED IN THIS MANNER, IT CAN READILY BE CHANGED BY REMOVING THE BOLTS HOLDING IT TO THE ENGINE BASE AND ROTATING IT ONE SET OF HOLES.

THE EXHAUST SECTIONS SHOULD NEXT BE INSTALLED. THIS IS SECURED BY 4 - 3/8 INCH BOLTS THROUGH THE CORNER CLIPS AND 2 - 1/2 INCH BOLTS ON THE SIDE CLIPS. THE 1/2 INCH BOLTS SHOULD BE SECURELY LOCKED AS A SAFETY PRECAUTION.

THE FLANGED SECTION THAT MOUNTS TO THE LEAF COLLECTION BOX SHOULD NEXT BE INSTALLED IN LINE WITH THE EXHAUST SECTION. THIS IS SUPPLIED IN A LONG LENGTH AND MAY HAVE TO BE CUT TO SUIT YOUR CONDITIONS. TO DETERMINE THIS, MEASURE THE DISTANCE BETWEEN THE END OF THE EXHAUST DUCT, CONNECTED TO YOUR POWER UNIT, AND THE EXHAUST SECTION, CONNECTED TO YOUR TRUCK. THIS DISTANCE SHOULD BE BETWEEN 30 TO 36 INCHES.

AFTER CUTTING THIS TO THE PROPER LENGTH, WELD ON THE FLANGE SECTION WHICH IS SIMILAR TO THE ONE WELDED ON TO THE EXHAUST SECTION WHICH IS NOW MOUNTED ON YOUR POWER UNIT.

CUT THE LENGTH OF FLEXIBLE FABRIK HOSE 3 TO 4 INCHES SHORTER THAN THE DISTANCE BETWEEN THE EXHAUST FLANGES. THIS LENGTH SHOULD BE MEASURED WHILE THE HOSE IS STRETCHED TIGHT.

NOW, SLIDE THE TWO FLANGED SECTIONS INTO BOTH RECEPTACLES ON THE EXHAUST SECTIONS. NEXT, INSTAL THE FLEXIBLE HOSE OVER THESE AND FASTEN BY MEANS OF THE STAINLESS STEEL HOSE CLAMPS. BE CERTAIN THE HOSE IS STRETCHED TIGHT. IF IT IS NOT STRETCHED TIGHT, DEBRIS WILL COLLECT IN THIS SECTION.

BOOM ASSEMBLY:

THE BOOM SHOULD THEN BE INSTALLED IN THE BOOM HOLDER. THIS IS DONE BY SLIDING THE VERTICAL ARM INTO THE UPPER BRACKET AND THEN DROPPING DOWN IN TO THE LOWER BRACKET. THE OUTRIGGER ARM IS NEXT INSTALLED AND FASTENED WITH A 1/2 INCH BOLT AND LOCK NUTS. THE THREADED SUPPORT SPRING ARM IS FASTENED - WHICH COMPLETES THIS ASSEMBLY.

HOSE ASSEMBLY AND POSITIONING:

THE HOSE IS NEXT INSTALLED AND SECURED TO THE FLANGE BY MEANS OF A STAINLESS STEEL HOSE CLAMP. FOLLOWING THIS, THE BOOM HOSE SUPPORT BAND IS SLIPPED OVER THE HOSE. THIS SHOULD BE SECURED ABOUT 2 FEET FROM THE END OF THE HOSE. THE PICK-UP NOZZLE IS NEXT INSTALLED AND FASTENED WITH A SECOND HOSE CLAMP.

A CHAIN CONNECTS THE HOSE SUPPORT BAND TO THE END OF THE BOOM. IT IS VITALLY IMPORTANT THAT THIS CHAIN IS ADJUSTED CORRECTLY FOR EASE OF OPERATION. IN GENERAL, THE CHAIN SHOULD BE SO ADJUSTED THAT THE NOZZLE IS APPROXIMATELY

HOSE ASSEMBLY AND POSITIONING - CONTINUATION:
12 INCHES OFF THE GROUND.

THE ULTIMATE CHECK TO BE CERTAIN THIS ADJUSTMENT IS CORRECT TAKES PLACE AFTER THE MACHINE IS RUNNING AT OPERATING SPEED. TO MAKE THIS CHECK, SPEED UP THE ENGINE. YOU SHOULD THEN BE ABLE TO PUSH THE NOZZLE TO THE GROUND AND PULL IT BACK UP BY USING THREE FINGERS OF ONE HAND. IF YOU CANNOT OPERATE THE NOZZLE ACCORDINGLY, EITHER THE CHAIN SHOULD BE RE-ADJUSTED OR THE SPRING TENSION OF THE BOOM ASSEMBLY, CHANGED. A FEW MINUTES TIME IN ADJUSTING THIS CORRECTLY WILL ENSURE EASE IN OPERATION.

OPERATION:

YOUR 6500FM GIANT-TRUCK LOADER IS A VERY EASY MACHINE TO OPERATE. BE CERTAIN THE BOOM IS PROPERLY ADJUSTED ACCORDING TO THE INSTRUCTIONS FOUND IN AN EARLIER SECTION OF THIS MANUAL.

IN OPERATION, YOU WILL NOTE THE BOOM WILL READILY SWING OVER A 10 FOOT PATH. THIS ALLOWS YOU TO READILY CLEAN A WIDE AREA, EFFICIENTLY. IF THE PILE IS HIGH, A SHORT BACK AND FORTH FLICKING MOTION WILL EFFECTIVELY EAT INTO THE PILE OF LEAVES.

IF THE LEAVES ARE WET, IT IS BEST TO MOVE INTO THE PILE WITH A "GULPING" MOTION. IN THIS WAY, YOU WILL PICK UP A QUANTITY AND THEN MOVE THE HOSE SLIGHTLY AWAY FROM THE PILE TO ALLOW THE LEAVES TO RAPIDLY FLUSH THROUGH.

UNLOADING AND UNCOUPLING GIANT-LOADER:

WHEN THE LOAD IS READY TO BE DUMPED, THE FOLLOWING SHOULD BE PERFORMED. RAISE UP ON THE CYLINDER HOIST. THIS PUTS SOME SLACK IN THE EXHAUST HOSE SECTION. NEXT, SLIDE ONE OF THE FLANGE SECTIONS OUT, AND THE TRUCK IS NOW READY TO DUMP.

IF MORE THAN ONE TRUCK IS TO BE USED, YOUR GIANT-LOADER CAN BE READILY DISCONNECTED BY PERFORMING THE FOLLOWING:

WHILE THE CYLINDER HOIST IS RAISED, DROP DOWN THE TWO FORWARD KICK STANDS. UNCOUPLE THE EXHAUST HOSE AND THEN LOWER THE CYLINDER. NEXT, LOWER THE TWO AFT SCREW JACKS AND UNCOUPLE. YOUR GIANT-LOADER IS NOW READY TO MOUNT ON THE NEXT TRUCK.

DEBRIS BOXES:

YOUR GIANT-LOADER CAN READILY BE USED IN CONJUNCTION WITH A DUMP TRUCK OR GARBAGE PACKER. THE FOLLOWING ARE A FEW THOUGHTS WHICH WE HOPE MIGHT BE HELPFUL IN CONSTRUCTING THESE BOXES.

TO BEGIN WITH, IT IS IMPORTANT TO HAVE AN ADEQUATE SCREENED SECTION FOR ALLOWING THE TREMENDOUS VOLUME OF AIR THAT YOUR GIANT-LOADER GULPS UP EACH MINUTE, TO ESCAPE. AS A MATTER OF FACT, WE STRONGLY RECOMMEND THE ENTIRE TOP BE COVERED WITH SCREENING. ONE INCH EXPANDED MESH OR 1/4 SQUARE WIRE MAKES AN EXCELLENT SCREEN. THE THEORY BEHIND THIS IS QUITE SIMPLE. FOR EXAMPLE, IF 10 SQUARE FEET OF EXHAUST SECTION WOULD PRODUCE A 100 MILES PER HOUR EXHAUST VELOCITY, THIS WOULD BE CUT DOWN TO A 10 MILE PER HOUR EXHAUST VELOCITY IF THE OPENING WAS INCREASED TO 100 SQUARE FEET.

IF A DUMP TRUCK IS USED, THE COLLECTION BOX IS GENERALLY FABRICATED OUT OF PLYWOOD AND ANGLE IRON. QUITE OFTEN A 3 INCH ANGLE IRON FRAME IS FIRST FABRICATED. THE SIDES ARE LINED WITH 3/4 INCH THICK EXTERIOR TYPE PLYWOOD.

DEBRIS BOXES - CONTINUATION:

DO NOT USE ANY THINNER PLYWOOD AS THE INTERNAL PRESSURE IS APT TO BLOW THE SIDES OUT.

A FRAME IS MADE FOR THE TOP WHICH IS NEXT COVERED WITH METAL SCREENING. THE DUMP TRUCK DOOR SHOULD BE REMOVED. A DOOR SHOULD THEN BE FABRICATED, WHICH IS HINGED AT THE TOP. THIS ALSO CAN BE FABRICATED FROM ANGLE IRON AND PLYWOOD.

WARRANTY:

WITHIN 90 DAYS FROM THE PURCHASE DATE, THE GIANT-VAC MFG. COMPANY WILL REPLACE FREE OF CHARGE, FOR THE ORIGINAL PURCHASER, ANY PART OR PARTS RETURNED TO THE FACTORY AT SOUTH WILLINGTON, CONNECTICUT, AND FOUND BY US TO BE DEFECTIVE IN MATERIAL OR WORKMANSHIP.

DEBRIS BOXES - CONTINUATION

DO NOT USE ANY THINNER PLYWOOD AS THE INTERNAL PRESSURE IS APT TO BLOW THE SIDES OUT.

A FRAME IS MADE FOR THE TOP WHICH IS NEXT COVERED WITH METAL SCREENING. THE DUMP TRUCK DOOR SHOULD BE REMOVED. A DOOR SHOULD THEN BE FABRICATED, WHICH IS HINGED AT THE TOP. THIS ALSO CAN BE FABRICATED FROM ANGLE IRON AND PLYWOOD.

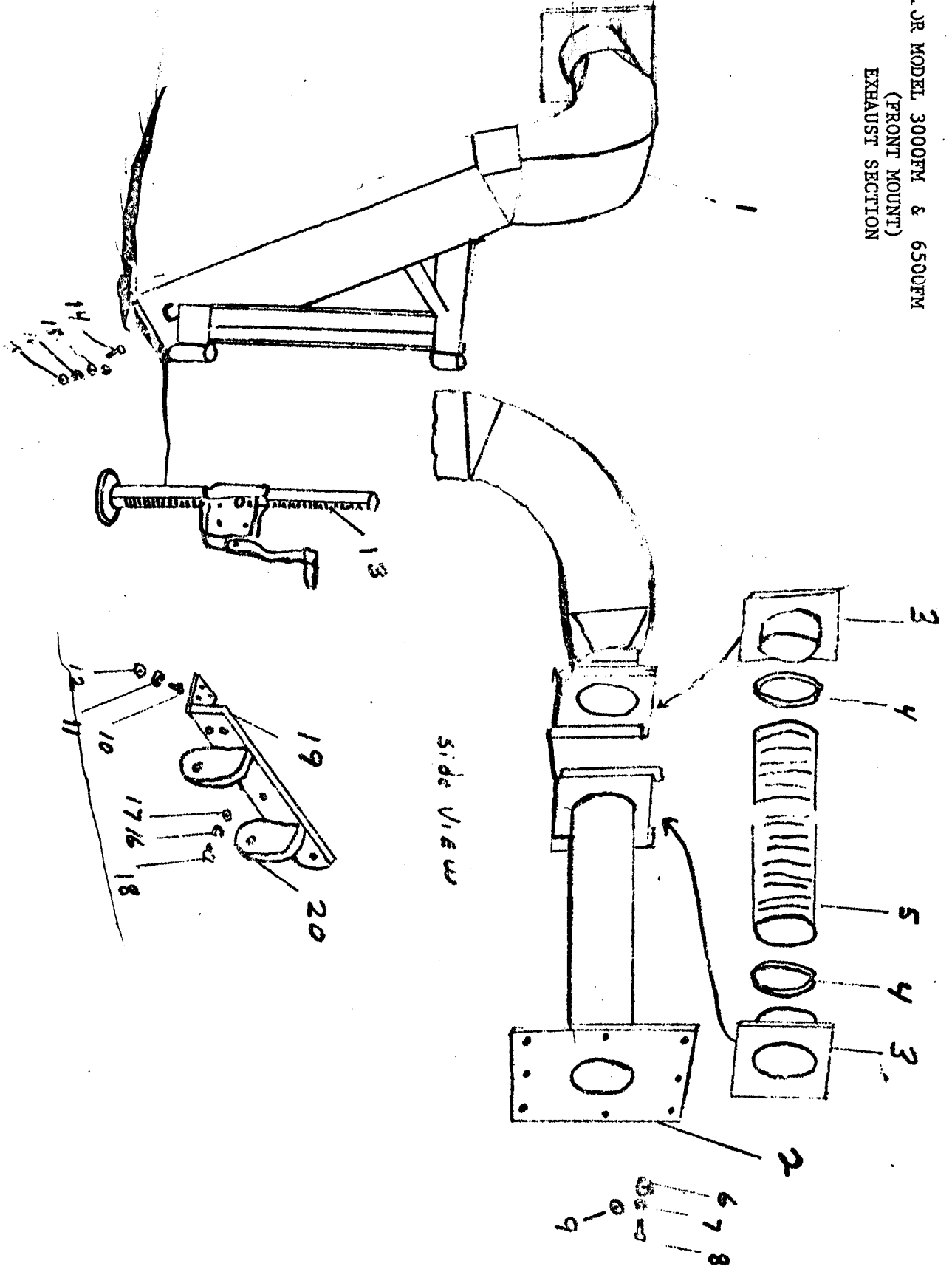
WARRANTY:

WITHIN 90 DAYS FROM THE PURCHASE DATE, THE GIANT-VAC MFG. COMPANY WILL REPLACE FREE OF CHARGE FOR THE ORIGINAL PURCHASER, ANY PART OR PARTS RETURNED TO THE FACTORY AT SOUTH WINDHAM, CONNECTICIT AND FOUND BY US TO BE DEFECTIVE IN MATERIAL AND / OR WORKMANSHIP.

REFERENCE: PARTS LISTS NOS. 5722, 5724, AND 5725.

PRINTED IN U.S.A.
APRIL 2, 1973.

JR MODEL 3000FM & 6500FM
(FRONT MOUNT)
EXHAUST SECTION

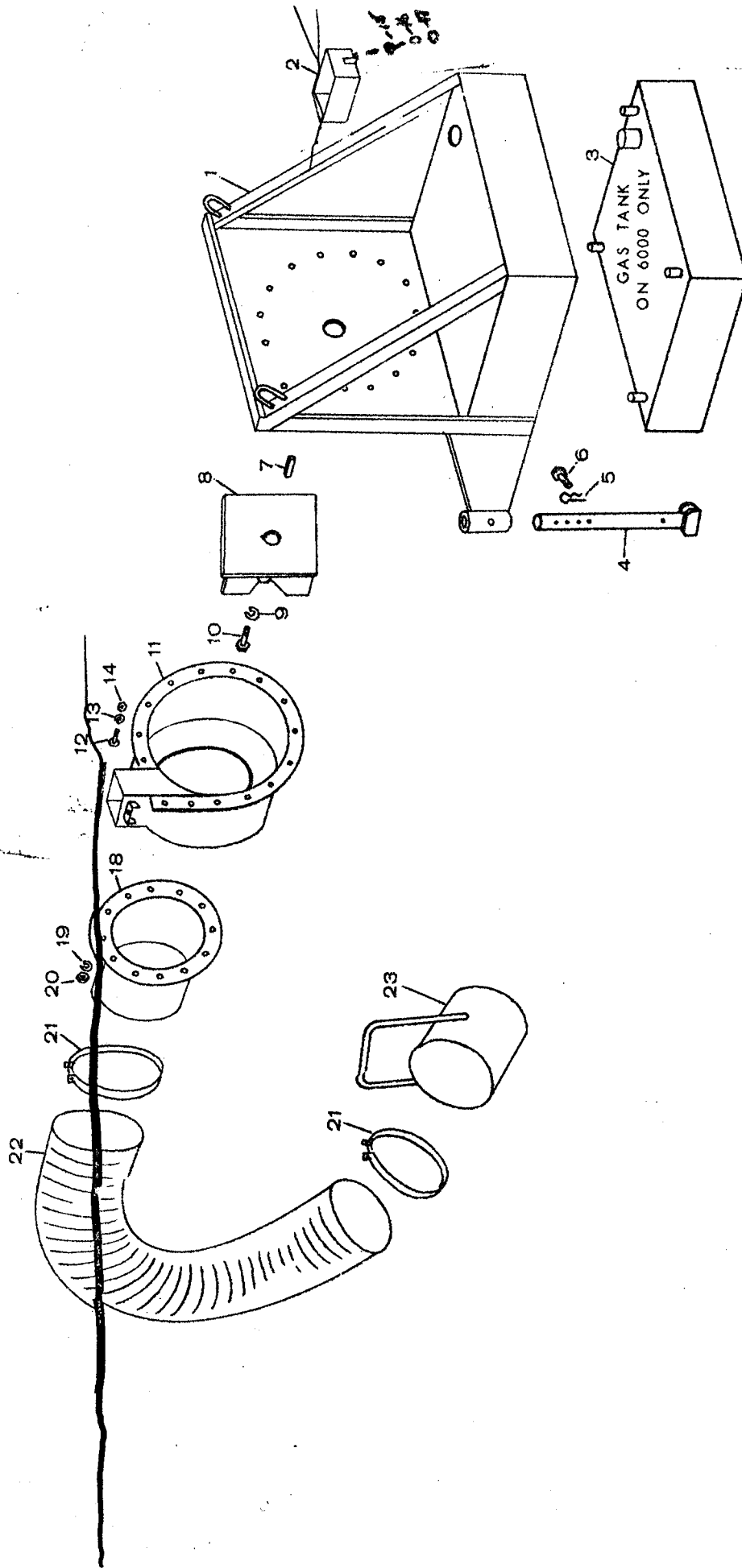


GIANT-TRUCK LOADER
EXHAUST SECTION - FRONT MOUNT
MODELS 3000 & 6500

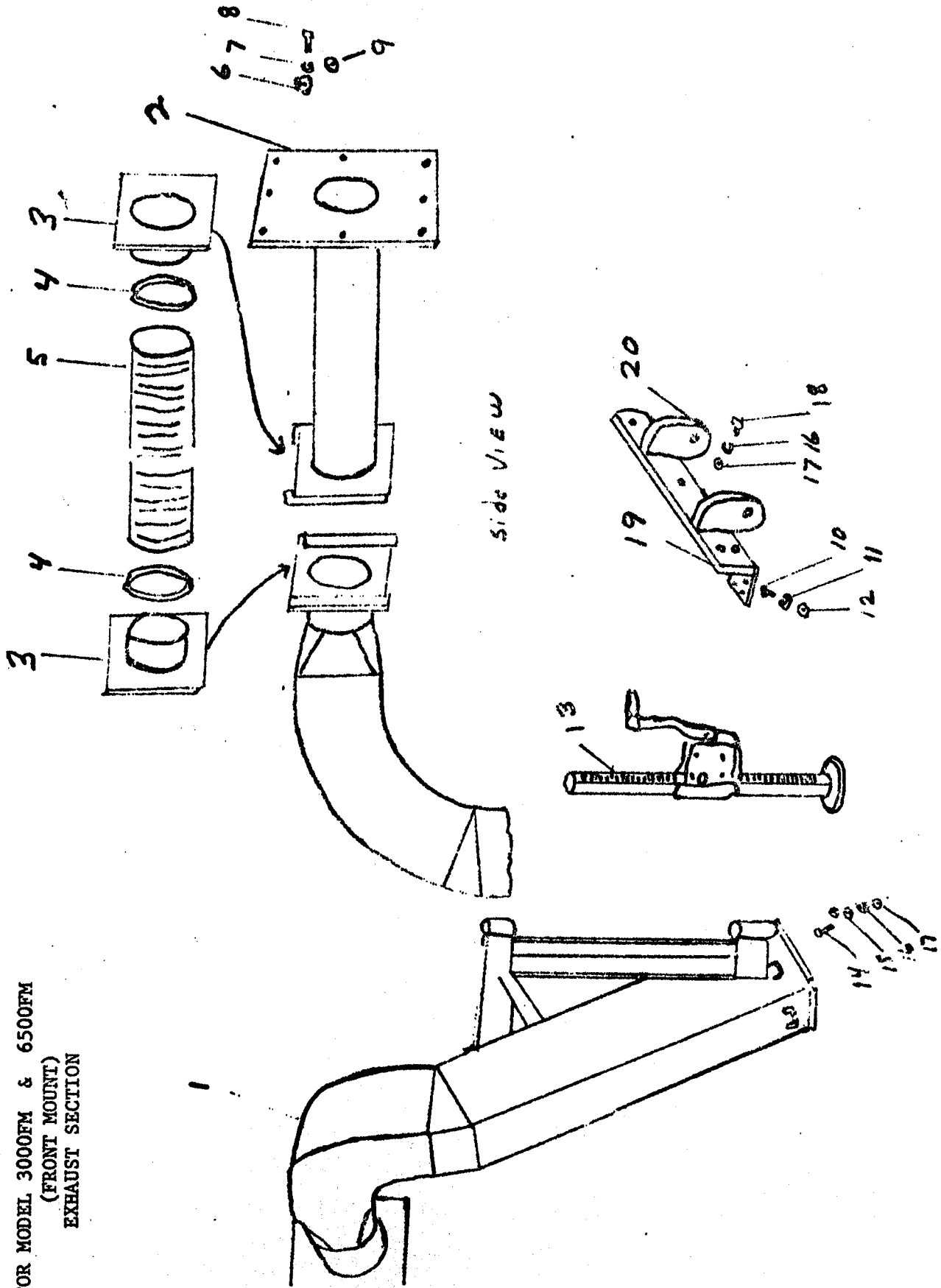
REF. NO.	PART NO.	DESCRIPTION	3000FM	6500FM
1	24544	Exhaust Duct Sq. to 45 degrees-10½ X 12" -12" Rd.	1	
1	24545	Exhaust Duct Sq. to 45 degrees-12" x 12"-12" Rd.		1
2	24546	Exhaust Duct Body Flange	1	
2	24547	Exhaust Duct Body Flange		1
3	24548	Square Plate to 12" Round	2	
3	24549	Square Plate to 12" Round		2
4	34020	12" Hose Clamps	2	2
5	34027	3' x 12" Heavy Duty Hose	1	1
6	31142	5/16" Hex Nut	8	8
7	31143	5/16" Lockwasher	8	8
8	31144	5/16" x 1¼" Hex Bolt	8	8
9	31145	5/16" Flat Washer	16	16
10	31114	3/8" x 1" Hex Bolt	8	8
11	31115	3/8" Lockwasher	8	8
12	31116	3/8" Hex Nut	8	8
13	33052	Adjustable Jack	2	2
14	31117	½" x 4½" Hex Bolt	2	2
15	31119	½" Flat Washer	4	4
16	31121	½" Lockwasher	7	7
17	31118	½" Hex Nut	7	7
18	31146	½" x 1 3/4" Hex Bolt	5	5
19	38005	Back Plate for Adjustable Jack	1	
19	38006	Back Plate for Adjustable Jack		1
20	38007	Bar Plates for Snow Plow Hook-up	2	2

April 2, 1973.

GIANT TRUCK LOADER POWER UNIT MODEL 3000 & MODEL 6000



FOR MODEL 3000FM & 6500FM
 (FRONT MOUNT)
 EXHAUST SECTION



side view

GIANT-TRUCK LOADER
EXHAUST SECTION - FRONT MOUNT
MODELS 3000 & 6500

REF. NO.	PART NO.	DESCRIPTION	3000FM	6500FM
1	24544	Exhaust Duct Sq. to 45 degrees-10½ X 12" -12" Rd.	1	
1	24545	Exhaust Duct Sq. to 45 degrees-12" x 12"-12" Rd.		1
2	24546	Exhaust Duct Body Flange	1	
2	24547	Exhaust Duct Body Flange		1
3	24548	Square Plate to 12" Round	2	
3	24549	Square Plate to 12" Round		2
4	34020	12" Hose Clamps	2	2
5	34027	3' x 12" Heavy Duty Hose	1	1
6	31142	5/16" Hex Nut	8	8
7	31143	5/16" Lockwasher	8	8
8	31144	5/16" x 1¼" Hex Bolt	8	8
9	31145	5/16" Flat Washer	16	16
10	31114	3/8" x 1" Hex Bolt	8	8
11	31115	3/8" Lockwasher	8	8
12	31116	3/8" Hex Nut	8	8
13	33052	Adjustable Jack	2	2
14	31117	½" x 4½" Hex Bolt	2	2
15	31119	½" Flat Washer	4	4
16	31121	½" Lockwasher	7	7
17	31118	½" Hex Nut	7	7
18	31146	½" x 1 3/4" Hex Bolt	5	5
19	38005	Back Plate for Adjustable Jack	1	
19	38006	Back Plate for Adjustable Jack		1
20	38007	Bar Plates for Snow Plow Hook-up	2	2

April 2, 1973.