

OPERATING INSTRUCTIONS
FOR
DOUBLE HEADED BLO
MODEL 2351

Your Giant-Blo comes complete in once crate with the necessary parts.

Inspect your unit for any damage that might have occurred in shipping. If any is found, save the packing container and **IMMEDIATELY** notify the transport carrier who delivered your machine as he is responsible for the damage and is the only one to make any adjustments. Before leaving our plant, all components were completely inspected. All manufacturing dimensions are held to close tolerances, and thus, you will have little difficulty in assembling your Giant-Blo if you follow these steps.

MOTOR INSTRUCTIONS: You have received a complete engine manual with your machine. Especially note instructions on OILING. Fill out the warranty card IMMEDIATELY and send it to the engine manufacturer as directed. Engines are warranted by the engine manufacturer and not by Giant-Vac. Consequently, if any difficulties exist, please contact them rather than us as much time will be saved as they would be the only ones to make any adjustments. If you will check the yellow pages in your telephone directory, you will find the local engine servicing dealer.

CAUTION
ROTATING FAN

**BEFORE MAKING ANY ADJUSTMENTS OR REPAIRS
STOP ENGINE AND REMOVE SPARK PLUG WIRE.
WHILE IN OPERATION KEEP ALL PARTS OF BODY
AWAY FROM INTAKE AND EXHAUST SECTIONS.**

ASSEMBLING: First, bolt the exhaust housing Ref. #2 to the blower housing and motor base. Next bolt the control lever, Ref. #4, to the exhaust housing. Then bolt draw bar hitch, Ref. #5, to the front of motor base.

OPERATION: Your Double Headed Giant-Blo will blow in either a left or right hand direction by flipping one lever which actuates a flap in the discharge head. With this feature, debris may always be windrowed in the same direction. This unit is normally towed behind a tractor or small truckster.

GIANT-VAC WARRANTY

GIANT-VAC MFG. COMPANY INCORPORATED, here-in-after called Giant-Vac, warrants each new Giant-Vac to the original retail purchaser of new Giant-Vac equipment to be free from manufacturing defects innormal service for a period of 90 days, unless it is used for rental purposes which limits the warranty to 30 days. This warranty does not apply to engines, tires or other parts that are manufactured and warranted by the manufacturer. Items such as bags, grass catchers, hoses and blades are not warranted - as these are considered expendable items. This warranty does not include equipment failures due to normal wear.

An obligation under this warranty is expressly limited to the replacement or repair at an authorized servicing Giant-Vac dealer, or at a point designated by us, of such part or parts as shall appear to us to have been defective. All defective parts have to be returned freight prepaid before credit is issued.

We shall not be liable for transportation charges in connection with the replacement or repair of defective parts.

This warranty does not apply to a Giant-Vac upon which repairs or alterations have been made by others except with our prior written approval.

We shall not be liable for consequential damages or contingent liabilities nor for the fitness of any Giant-Vac for any particualr purpose.

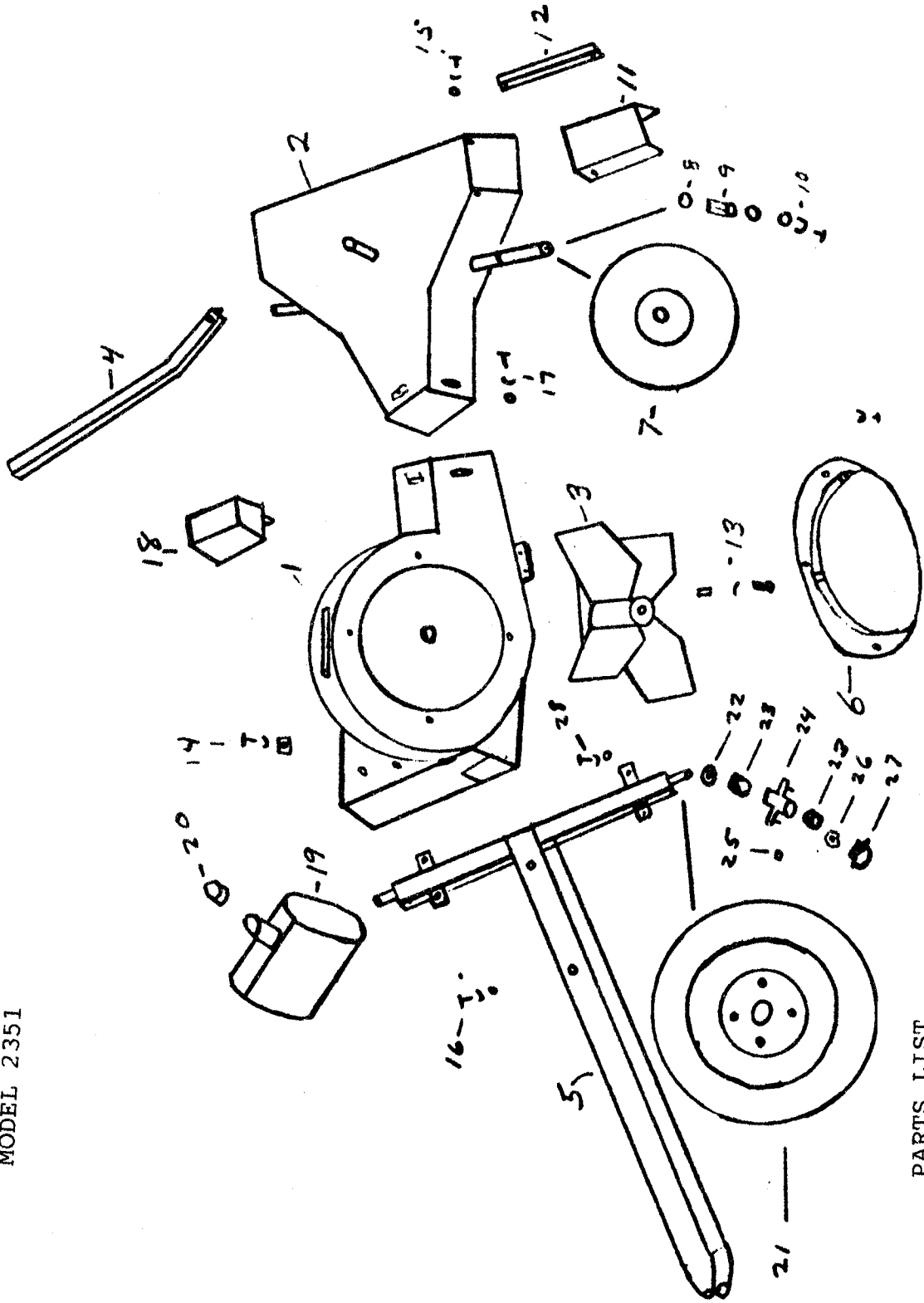
We make no other express, implied or statutory warranty, nor is anyone authorized to make any in our behalf.

PARTS LIST NO. 5790

MODEL 2351
DOUBLE HEADED BLO

<u>REF.</u> <u>NO.</u>	<u>PART</u> <u>NO.</u>	<u>DESCRIPTION</u>	<u>NO. OF</u> <u>PARTS</u>
1	10061	Flower housing & engine base	1
2	10063	Exhaust housing	1
3	21526	Impeller	1
4	23047	Control rod	1
5	38012	Draw bar hitch and axle	1
6	20172	Intake baffle	1
7	33033	Wheel w/bearing 16 x 650 x 8	2
8	33065	Bearing cup	4
9	33064	Roller baring 1"	2
10	31169	Bolt, washer, lockwasher 3/8 x 1"	2
11	24562	Left side deflector	1
11A	24563	Right side deflector	1
12	23048	Left deflector control rod	1
12A	23049	Right deflector control rod	1
13	31183	Impeller bolt and key	1
14	31181	Motor bolt and washer, nut	4
15	31184	Bolt, lock nut 3/8 x 1"	8
16	31171	Bolt, nut, lockwasher 1/2 x 1-1/4"	2
17	31185	Bolt, nut lockwasher 3/8 x 1-1/2"	3
18	40115	Battery box	1
19	40113	Gas tank	1
20	40114	Gas tank cap	1
21	33054	Tire and rim 18-850 x 8	2
22	33057	Seal	2
23	33056	Bearing high speed	4
24	33058	Hub less bearing	2
25	31152	Lug nut	8
26	31151	Lock nut and set screw	2
27	33055	Dust cap	2
28	31162	Bolt, nut, lockwasher 1/2"	4
	39019	23HP Kohler engine	1

DOUBLE HEADED BLO
MODEL 2351



PARTS LIST
NO. 5790