

OPTIONAL ACCESSORIES

**801 HOSE KIT - CODE NO. 70187**

4" (102mm) x 10' (3.05m)

**802 HOSE KIT - CODE NO. 70188**

5" (127mm x 10' (3.05m)

**803 HOSE KIT - CODE NO. 70189**

6" (152.4mm x 10' (3.05m)

For vacuuming in hard to reach areas

**809 HOSE KIT - CODE NO. 70193**

**EXHAUST HOSE KIT**

For blowing in hard to reach areas

**GIANT-VAC MFG. INCORPORATED**

**CE95**

**OPERATOR OWNER'S MANUAL**

**50-B-P -- 50-B-P-IC**

**SPECIFICATIONS**

ENGINE: H.P.	5.0 (3.73 kW)
ENGINE: TYPE	Briggs & Stratton (B&S) or IC (Industrial Commercial)
ENGINE: FUEL CAP.	1.5 qt. (1.4 L)
ENGINE: OIL CAP.	.634 qt. (0.6 L)
WEIGHT: UNIT	95# (43.1 kg)
WEIGHT: SHIPPING	100# (45.4 kg)
ENGINE WEIGHT:	40# (18.1 kg)

UNIT SIZE: OVERALL LENGTH: 47" (1.19m) OVERALL WIDTH: 21.5" (0.55m) OVERALL HEIGHT: 40.5" (1.02m)

## IN THE INTEREST OF SAFETY



**BEFORE STARTING ENGINE, READ AND UNDERSTAND THE "ENTIRE OPERATOR'S MANUAL & ENGINE MANUAL."**



**THIS SYMBOL MEANS WARNING OR CAUTION. DEATH, PERSONAL INJURY AND/OR PROPERTY DAMAGE MAY OCCUR UNLESS INSTRUCTIONS ARE FOLLOWED CAREFULLY.**

### WARNING: DO NOT



1. **DO NOT** run engine in an enclosed area. Exhaust gases contain carbon monoxide, an odorless and deadly poison.

2. **DO NOT** place hands or feet near moving or rotating parts.

3. **DO NOT** store, spill or use gasoline near an open flame, or devices such as a stove, furnace, or water heater which has a pilot light or devices which can create a spark

4. **DO NOT** refuel indoors where area is not well ventilated. Outdoor refueling is recommended.

5. **DO NOT** fill fuel tank while engine is running. Allow engine to cool for 2 minutes before refueling. Store fuel in approved safety containers.

6. **DO NOT** remove fuel tank cap while engine is running.

7. **DO NOT** operate engine when smell of gasoline is present or other explosive conditions exist.

8. **DO NOT** operate engine if gasoline is spilled. Move machine away from the spill and avoid creating any ignition until the gasoline has evaporated.

9. **DO NOT** transport unit with fuel in tank.

10. **DO NOT** smoke when filling fuel tank.

11. **DO NOT** choke carburetor to stop engine. Whenever possible, gradually reduce engine speed before stopping.

12. **DO NOT** run engine at excessive speeds. This may result in injury &/or damage to unit.

13. **DO NOT** tamper with governor springs, governor links or other parts which may change the governed engine speed.

14. **DO NOT** tamper with the engine speed selected by the engine manufacturer.

15. **DO NOT** check for spark with spark plug or spark plug wire removed. Use an approved tester.

16. **DO NOT** crank engine with spark plug removed. If engine is flooded, place throttle in "FAST" position and crank until engine starts.

17. **DO NOT** strike flywheel with a hard object or metal tool as this may cause flywheel to shatter in operation. Use proper tools to service engine.

18. **DO NOT** operate engine without a muffler. Inspect periodically and replace, if necessary. If engine is equipped with muffler deflector, inspect periodically and replace, if necessary, with correct deflector.

19. **DO NOT** operate engine with an accumulation of grass, leaves, dirt or other combustible material in the muffler area.

20. **DO NOT** use this engine on any forest covered, brush covered, or grass covered unimproved land unless a spark arrester is installed on the muffler. The arrester must be maintained in working order by the operator. In the State of California the above is required by law (Section 4442 of the California Public Resources Code). Other states may have similar laws. Federal laws apply on federal lands.

21. **DO NOT** touch hot muffler, cylinder, or fins because contact may cause burns.

22. **DO NOT** run engine without air cleaner or air cleaner cover.

23. **DO NOT** operate during excessive vibration.

24. **DO NOT** leave machine unattended while in operation.

25. **DO NOT** park machine on a steep grade or slope.

### WARNING: DO

1. **ALWAYS DO** remove the wire from the spark plug when servicing the engine or equipment **TO PREVENT ACCIDENTAL STARTING.**

2. **DO** keep cylinder fins and governor parts free of grass and other debris which can affect engine speed.

3. **DO** pull starter cord slowly until resistance is felt. Then pull cord rapidly to avoid kickback and prevent hand or arm injury.

4. **DO** examine muffler periodically to be sure it is functioning effectively. A worn or leaking muffler should be repaired or replaced as necessary.

5. **DO** use fresh gasoline. Stale fuel can gum carburetor and cause leakage.

6. **DO** check fuel lines and fittings frequently for cracks or leaks. Replace if necessary.

7. **Follow** engine manufacturer operating and maintenance instructions.

8. **Inspect** machine and work area before starting unit.

## SOUND

### SOUND TESTS

Sound tests conducted were in accordance with 79/113/EEC and were performed on 00/00/96 under the conditions listed:

GENERAL CONDITION: \_\_\_\_\_  
TEMPERATURE: \_\_\_\_\_  
WIND SPEED: \_\_\_\_\_  
WIND DIRECTION: \_\_\_\_\_  
HUMIDITY: \_\_\_\_\_  
BAROMETRIC PRESSURE: \_\_\_\_\_

OPERATOR

## VIBRATION

### VIBRATION LEVELS 0.0 g

Vibration levels at the operators handles were measured in the vertical, lateral, and longitudinal directions using calibrated vibration test equipment. Tests were performed on 00/00/96 under the conditions listed:

GENERAL CONDITION: \_\_\_\_\_  
TEMPERATURE: \_\_\_\_\_  
WIND SPEED: \_\_\_\_\_  
WIND DIRECTION: \_\_\_\_\_  
HUMIDITY: \_\_\_\_\_  
BAROMETRIC PRESSURE: \_\_\_\_\_

## GENERAL SAFETY

*For your safety and the safety of others, these directions should be followed:*



Do not operate this machine without first reading owner's manual and engine manufacturer's manual.



Use of Ear Protection is recommended while operating this machine.

Use of Eye and Breathing protection is recommended when using this machine, especially in dry and dusty conditions.

•DO NOT operate during excessive vibration.

•DO NOT operate machine with hose flange, or hose removed  
•DO NOT use this machine for vacuuming **exclusively** sand, dust, fine dirt, rock, glass, string like material, grain, rags, cans, metal, bark or water.

•DO NOT pick up any hot or burning debris, or any toxic or explosive material

•DO NOT operate this machine on slopes greater than 20%.

•DO NOT place hands or feet inside nozzle intake opening near debris outlet or near any moving parts

•DO NOT allow children to operate this equipment.

## PACKING CHECKLIST

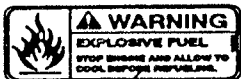
These items should be included in your carton. If any of these parts are missing, contact your dealer.

# LITERATURE ASSY P/N 890290

	Literature Checklist	
Owner's Manual	Check <input type="checkbox"/>	Owner's Manual
Literature Loose Parts	Check <input type="checkbox"/>	Literature Loose Parts
Accessories	Check <input type="checkbox"/>	Accessories
Warranty Card	Check <input type="checkbox"/>	Warranty Card
EU Declaration of Conformity & EU Distributor List	Check <input type="checkbox"/>	EU Declaration of Conformity & EU Distributor

## INSTRUCTION LABELS

These labels should be included on your Vacuum. If any of these labels are damaged, replace them before putting this equipment into operation.



Label Do Not Fill While Engine Is Hot



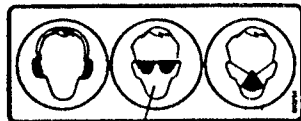
Label Read Owner's Manual



Label Danger Flying



Label Danger Keep Hands and Feet Away



Label Ear Eye Breathing

## ENGINE LABELS

Briggs & Stratton



## ASSEMBLY

Read all safety and operating instructions before assembling or starting this unit.

PUT OIL IN ENGINE BEFORE STARTING

As you unpack your Giant-Blo power unit, you will find holes the following parts:

- 1-Power unit with motor, impeller, and wheels mounted
- 1-Set of handles in three parts
- 1-Handle brace
- 1-Package of hardware

Inspect parts for any damage that might have occurred during shipping. If any are found, save the packing box and IMMEDIATELY notify the transport carrier who delivered your machine as they are responsible for the damage and are the only ones to make any adjustments. Before leaving our plant, all dimensions are held to close tolerances. Thus you will have little difficulty in assembling your Giant-Vac if you follow these steps.

### ATTACHMENTS

Your Giant-Blo is extremely versatile, therefore, many attachments available. These are easily interchangeable and fasten to your machine as follows:

1. All attachments which are fastened to the suction end of the machine (the large round hole in the front) are secured by 3/8" wing bolts and lock washers.
2. All attachments for the exhaust end of the machine (the discharge end of the blower) are fastened in place of the discharge deflector plate, utilizing the same hardware.

The handles and handle brace should be completely assembled and fastened to the blower as a unit. When assembling the handles, it is important that you DO NOT TIGHTEN ANY OF THE BOLTS until the assembly operations are complete. With the bolts loose, there will be enough movement to permit fast and easy assembly. Proceed as follows:

1. Insert the two lower handles into the upper handle until the bolt are in line.
2. Fasten the handle brace to the handles with the two 5/16 x 1-3/4" hex head bolts, lock washers, and nuts. DO NOT TIGHTEN THESE BOLTS YET. The handle assembly is now ready to attach to the blower.
3. Fasten the lower handles to the base with four 5/16 x 1-3/4" hex bolts, lock washers, and nuts. DO NOT TIGHTEN THESE BOLTS YET.
4. Install the handle brace to the stud on the housing with a 3/8" lock washer and nut.
5. Now that the handles are assembled to the machine, tighten ALL the bolts.
6. Take the throttle cable and run it along the left side of the handle about 1/3 of its length. Secure it with a clip about two inches below the brace.
7. The throttle lever is secured to the handle by means of two 10-24 x 1-1/2" bolts, lock washers and nuts.
8. Put the second clip just below the curve of the upper handle. Make sure you have left a generous loop between the engine and the bottom clip. THIS IS IMPORTANT to keep the throttle from binding.
9. After starting your engine, adjust the length of the cable by loosening the screw at the throttle lever for proper engine operation.

### OPTIONAL ATTACHMENTS

HOSE ATTACHMENTS: Many hose attachments are available. These are all mounted in the following manner. First fasten the hose to the intake flange. This is done by slipping the hose over the connector on the flange and fastening it securely with a hose clamp. Then, put the nozzle into the hose and secure with a hose clamp. Then mount the flange to the front of the housing in the same manner as the foregoing. The hose kits are ideal for cleaning leaves from hedges, chimneys and stair wells as well as, other applications.

MOTOR INSTRUCTIONS: You have received a complete engine manual with your machine. Be sure to especially note the instructions on OILING. ALL MACHINES ARE SHIPPED WITHOUT OIL OR GASOLINE UNLESS OTHERWISE NOTED. If you have any difficulties with the engine, check the Yellow Pages of your phone book for the engine dealer nearest you, rather than us, as the engines are under their own manufacturer's warranty.

## OPERATION

**INTENDED USE:** This machine is designed for blowing leaves, grass clippings and other types of organic litter. Do not operate if excessive vibration occurs. If excessive vibration occurs, shut engine off immediately and check for damaged or worn impeller, loose impeller bolt, loose impeller key, loose engine or lodged foreign objects. (See trouble shooting section).

Like all mechanical tools reasonable care must be used when operating machine.

**Inspect machine work area and machine before operating. Make sure that all operators of this equipment are trained in general machine use and safety.**

**PUT OIL IN ENGINE BEFORE STARTING**

### ***IF YOUR UNIT FAILS TO START:***

See Troubleshooting on page 11.

## STORAGE

Gasoline powered equipment or fuel containers should not be stored in a basement or any closed area where heating or heat appliances or even open pilot lights are present, unless the fuel is completely drained from the power equipment and the fuel containers.

### **If engine is to be unused for 30 days or more, prepare as follows:**

Be sure engine is cool. Do not smoke. Remove all gasoline from carburetor and fuel tank to prevent gum deposits from forming on these parts and causing possible malfunction of engine. Drain fuel outdoors, in an approved container, away from the open flame. materials may result in a fire.

## STARTING

**ENGINE:** See engine manufacturer's instructions for type and amount of oil and gasoline used.

Engine must be level when checking and filling oil and gasoline.

**ENGINE SPEED:** Controlled by throttle lever on the handle. Under normal conditions, operate at minimum throttle to accomplish your current cleaning task.

**FUEL VALVE:** Move fuel valve to "ON" position (provided on engine).

**PRIMER:** Push primer.

**THROTTLE:** Move remote throttle control to "ON" position. When the engine is cold, you may have to initially choke the engine. (The choke lever is next to the carburetor.) Pull the recoil starter rope slowly until you feel compression, then pull fast and steady. Do not let the starter rope snap back by itself. This may damage the rope or recoil starter assembly. After the engine starts, move the throttle lever to approximately half way down.

### **HANDLING & TRANSPORTING:**

Using two people to lift machine is recommended. Lift holding the handle and front of nose cone. Secure in place during transport.

Never adjust the Leaf Blo or change attachments until the engine has been turned off and the spark plug wire has been disconnected.

If carburetor adjustment is necessary, stand to one side and keep hands and feet in the clear while making adjustments.

Keep engine free from accumulations of grass, leaves and excessive grease. An accumulation of these combustible

Run engine until fuel tank is empty and engine runs out of gasoline.

**NOTE:** Fuel stabilizer (such as Sta-Bil) is an acceptable alternative in minimizing the formation of fuel gum deposits during storage. Add stabilizer to gasoline in fuel tank or storage container. Always follow mix ratio found on stabilizer container. Run engine at least 10 min. after adding stabilizer to allow it to reach the carburetor.

# MAINTENANCE

Use only a qualified mechanic for any adjustments, disassembly or any kind of repair.

**WARNING: TO AVOID PERSONAL INJURY, ALWAYS TURN MACHINE OFF. MAKE SURE ALL MOVING PARTS COME TO A COMPLETE STOP.**

**DISCONNECT SPARK PLUG WIRE BEFORE SERVICING UNIT.**

ENGINE: See engine manufacturer operator's instructions.

DEBRIS BAG: See page 5.

**RECONNECT SPARK PLUG WIRE, GUARDS, AND / OR HOSE BEFORE STARTING ENGINE.**

## IMPELLER REMOVAL

1. Wait for engine to cool and disconnect spark plug.
2. Drain fuel and oil from engine.
3. Disconnect throttle control from upper handle, and remove upper handle.
4. Invert and support machine without engine touching to prevent damage to recoil starter.

## IMPELLER REMOVAL continued

5. Remove baffle or intake flange.
6. Remove impeller bolt (item 10), lock washer (item 9) and flat washer (item 8).
7. Lift impeller free from engine.
8. If impeller does not remove easily, obtain a 1" (25.4mm) longer bolt of the same diameter and thread type as the impeller bolt. Thread the longer bolt by hand into crank shaft until bolt bottoms. Using a suitable gear or wheel puller against the bolt head and special puller grooves on front of the impeller, remove impeller from shaft.
10. Reinstall new impeller, impeller bolt, lock washer, and flat washer in reverse order.

**Maintenance Schedule** Follow these hourly maintenance intervals

Maintenance Operation	Every Use	Every 5 hrs or (Daily)
-----------------------	-----------	------------------------

Engine (See Engine Manual)		
Check for excessive vibration		
Clean debris bag	•	
Check bag strap tightness	•	
Inspect for loose parts		•
Inspect for worn or damaged parts		•

## TROUBLESHOOTING

Before Requesting Service Review These Suggestions

Problem	Possible cause	Solution
---------	----------------	----------

GIANT-VAC MFG. INCORPORATED  
 11 MACHINE SHOP RD.  
 P.O. BOX 195  
 SOUTH WINDHAM, CT 06266-0195  
 PHONE: 860-423-7741 FAX: 860-423-2654

## GIANT-VAC WARRANTY

GIANT-VAC MFG. INCORPORATED, here-in-after called Giant-Vac, warrants each new Giant-Vac to the original retail purchaser of the new Giant-Vac equipment to be free from manufacturing defects in normal service for a period of 90 days, unless it is used for rental purposes, which limits the warranty to 30 days. This warranty does not apply to engines, tires or other parts that are purchased and warranted by their manufacturer. Items such as bags, grass catchers, hoses and blades are not warranted, as these are considered expendable items. This warranty does not include equipment failures due to normal wear.

Any obligation under this warranty is expressly limited to the replacement or repair, at an authorized servicing Giant-Vac dealer, or at a point designated by us, of such parts as appear to us to have been defective. All defective parts have to be returned freight prepaid before credit will be issued.

We shall not be liable for transportation charges in connection with the replacement or repair of defective parts.

This warranty does not apply to a Giant-Vac upon which repairs or alterations have been made by others except with our prior written approval.

We shall not be liable for consequential damages or contingent liabilities for the fitness of any Giant-Vac for any particular purpose.

We make no other express, implied or statutory warranty, nor is anyone authorized to make any in our behalf.

GIANT-VAC MFG. INCORPORATED  
P.O. BOX 195  
SOUTH WINDHAM, CT. 06266  
PHONE: 860-423-7741 FAX: 860-423-2654



Please fill in the WARRANTY CARD and send the upper part to Giant-Vac. The WARRANTY terms are stated on the lower part which remains with the user. Whenever a Giant-Vac Machine is faulty due to a defect in material and / or workmanship, the owner should make a warranty claim as follows:

The Machine should be taken to the dealer from whom it was purchased or to an authorized Giant-Vac dealer.

The owner should present the remaining half of the Warranty Registration Card, or, if this is not available, the invoice or receipt.

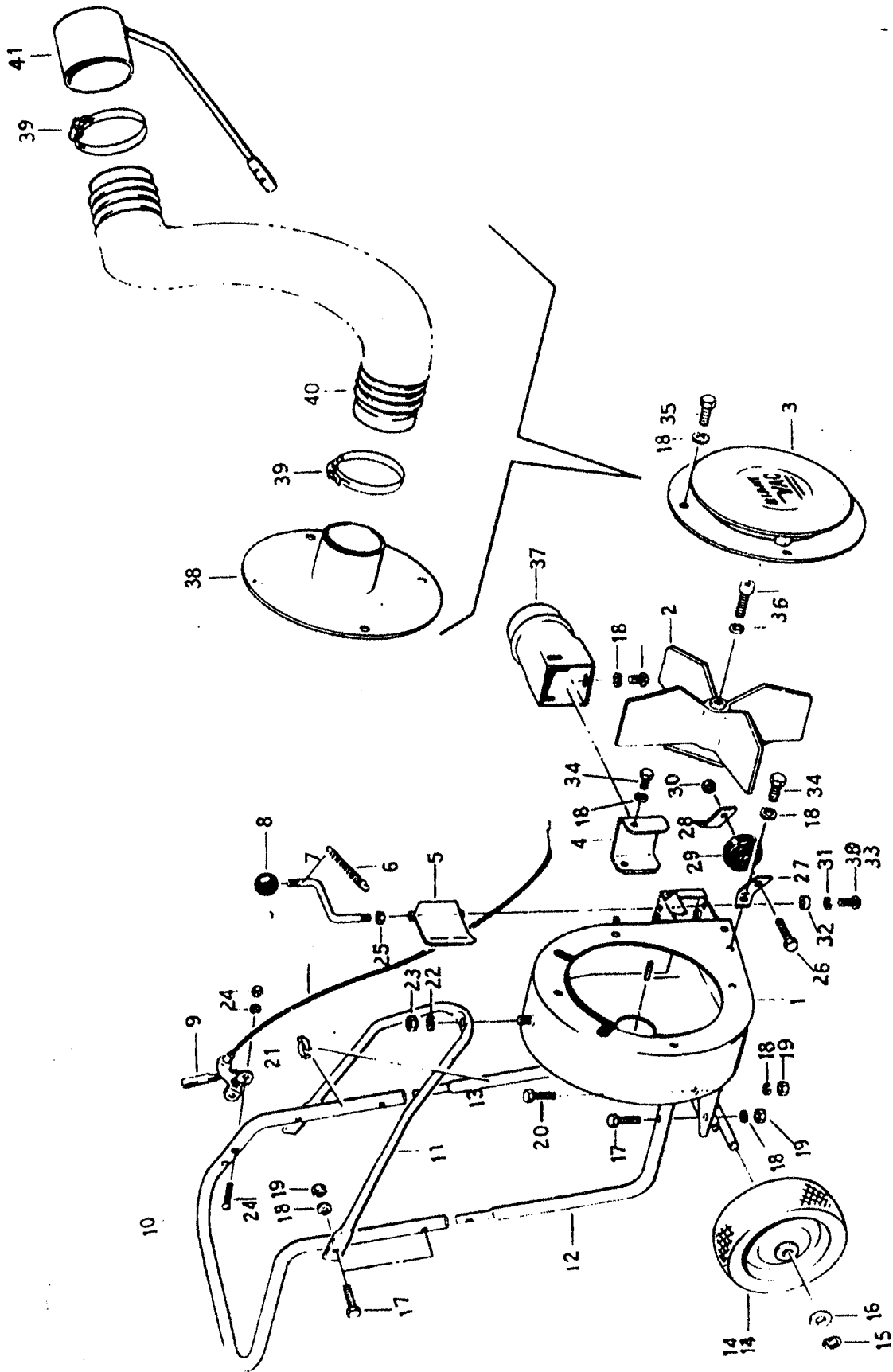
The Warranty Claim will be filled in by the authorized Giant-Vac Dealer, who will send it with the faulty part to Giant-Vac.

The Quality / Service department at Giant-Vac will study the claim and will notify their conclusions.

The decision by the Quality / Service department at Giant-Vac to approve or reject a Warranty claim is final and binding.

*Note:* To process a Warranty Claim, it is necessary to quote the Model & Serial number which are printed on the Giant-Vac serial plate,

**GIANT-VAC MFG. INCORPORATED**  
11 MACHINE SHOP RD.  
P.O. BOX 195  
SOUTH WINDHAM, CT 06266 / USA  
PHONE: 860-423-7741 FAX: 860-423-2654



- 50-B - 50-B-P - 50-B-P-IC
- 80-B - 80-B-P - 80-B-P-IC
- 90-MGP - 80-K-P
- 11-B-P - 11-B-P-IC

## PARTS LIST NO. 5700

<u>REF.</u> <u>NO.</u>	<u>PART</u> <u>NO.</u>	<u>DESCRIPTION</u>	<u>50-B-P</u>	<u>50-B-P-IC</u>
1	10089	Blower housing & engine base	1	1
2	21501	Impeller - 1" shaft	1	1
3	20101	Front baffle plate	1	1
4	24500	Side air deflector	1	1
5	24501	Forward air deflector	1	1
6	24502	Spring for control lever	1	1
8	31103	Control lever knob - 3/8"	1	1
9	35001	Throttle control	1	1
10	23000	Upper handle	1	1
10-A	31590	Foam handle cover	1	1
11	23003	Handle brace	1	1
12	23002	Lower handle	1	1
13	23002	Lower handle	1	1
14	33001	410.350 x 4 pneumatic tire assembly	2	2
14-A	33107	Bearing for pneumatic tire assembly	2	2
15	31000	Wheel snap ring	2	2
16	31001	5/8" flat washer	2	2
17	31002	5/16 x 1 3/4" hex bolt	6	6
18	31003	5/16" lock washer	21	21
19	31004	5/16" nut	10	10
20	31002	5/16" x 1 3/4" hex bolts	4	4
21	31007	Throttle clips	2	2
22	31008	3/8" lock washer	1	1
23	31009	3/8" nut	1	1
24	31010	10-24 x 1 1/2" bolt, lock washer and nut	2	2
26	31357	3/8 x 2 1/2" bolt**	1	1
27	33101	Right side rub plate**	1	1
28	33102	Left side rub plate**	1	1
29	33017	6"x 1.50 caster wheel**	1	1
29	**33003	6" caster wheel assembly	1	1
30	31355	3/8" lock nut	1	1
31	31013	1/4" lock washer	1	1
32	31014	Bushing	1	1
33	31015	1/4 x 1/2" hex bolt	1	1
34	31016	5/16 x 5/8" bolt	8	8
36	31019	3/8-24 x 2" impeller bolt & key	1	1
37	24503	#45 exhaust connector	1	1
38	20106	Intake flange 4"	1	1
38	20107	Intake flange 5"	1	1
38	20108	Intake flange 6"	1	1
39	34011	Hose clamp 4"	2	2
39	34012	Hose clamp 5"	2	2
39	34013	Hose clamp 6"	2	2
40	34002	Intake hose 4" x 10'	1	1
40	34003	Intake hose 5" x 10'	1	1
40	34004	Intake hose 6" x 10'	1	1
40	34006	Intake hose 8" x 10'	1	1
41	20145	Intake nozzle 4"	1	1
41	20146	Intake nozzle 5"	1	1
41	20147	Intake nozzle 6"	1	1

<u>REF. NO.</u>	<u>PART NO.</u>	<u>DESCRIPTION</u>	<u>50-B-P</u>	<u>50-B-P-1C</u>
		<u>ITEMS NOT SHOWN</u>		
	39001	5 H.P. B&S engine	1	
	39034	5 H.P. B&S I/C engine		1

ALL SPECIFICATIONS SUBJECT TO CHANGE WITHOUT NOTICE.