

## INSTRUCTIONS FOR ASSEMBLING AND OPERATING YOUR GIANT-VAC

# 'CHIP-N-BLOW'

### MODELS 5-B-A-C -- 8-B-A-C -- 8-B-A-C-I/P

Congratulations! You have just purchased one of the finest pieces of outdoor power equipment on the market today. If properly cared for, your Giant-Vac Chip-N-Blow will provide years of dependable service. Please read and follow this instruction manual carefully in order to get the most out of your new equipment.

As you unpack your Chip-N-Blow, you will find the following parts:

- 1 - Power unit with motor, impeller and rear wheels mounted
- 1 - Handle assembly in four parts
- 1 - Bag containing front caster assembly
- 1 - Bag containing pruning shears bracket
- 1 - Package of hardware
- 1 - Debris bag
- 1 - Owner's manual

Inspect parts for any damage that may have occurred during shipping. If any is found, save the packing box and immediately contact the transport carrier who delivered your machine, as they are responsible for the damage and are the only ones to make any adjustments.

Before leaving our plant, all parts are inspected to ensure proper fit. Therefore, you will have little difficulty in assembling your Chip-N-Blow if you follow these instructions.

### **CALIFORNIA PROPOSITION 65 WARNING**

Gasoline and Diesel engine exhaust and some of its constituents are known to the State of California to cause cancer, birth defects, and other reproductive harm.

As an owner of off-road gasoline or diesel engine equipment and/or as an employer, you also may have an obligation under the California Occupational Safety and Health Act or under Proposition 65 to warn persons exposed to gas and diesel engine exhaust and /or other Proposition 65 chemicals in and around your workplace. See California Health and Safety Code section 25249.5, Title 22 of the California Code of Regulations at section 1200, *et seq.*, and Title 8 of the California Code of Regulations section 5194.

## ASSEMBLY INSTRUCTIONS

(Please refer to Parts list for part identification and placement)

1. Insert Lower handles (Parts List Ref. #35) into Upper handle (#33) until bolt holes are in line. Align holes in sides of handle brace (#34) to holes in handles and fasten right side of handle assembly (when viewing from operator's perspective) with 5/16 x 1-3/4" hex bolt (#37), lock washer (#7) and nut (#11). Feed second 5/16 x 1-3/4 bolt out through inside of Pruning shears bracket (#36) and attach to left side of assembly as outlined above. **Note:** Do not tighten these bolts yet.
2. Attach handle assembly to power unit by securing handle brace to handle brace support bracket, located above blower housing, with 5/16 x 1" hex bolt (#10), lockwasher and nut. Fasten lower handles to engine base with four 5/16 x 1-3/4" bolts, lockwashers, and nuts. Tighten all bolts.
3. Attach throttle control (#38) to handle assembly with two #10 x 1-1/4" machine screws, lockwashers, and nuts (#39). Secure throttle cable to handle with two throttle cable clips (#38a), placing one approximately 2-3" below bend in upper handle, the other 4-5" above bend in lower handle. **Note:** Be sure to check throttle for smooth operation. If throttle control lever binds, or is difficult to operate, adjust cable and clips accordingly.
4. Attach caster assembly to front of blower unit as follows:  
**5HP units:** Attach caster assembly to unit with two 5/16 x 5/8" hex bolts (#13) and lockwashers (#7).  
**Note:** Be sure to set camber of wheel by adjusting either of the two brackets until wheel sits perpendicular to ground. This will ensure straight machine travel, as well as prevent uneven and premature caster tire wear.  
**8HP units:** Place right caster bracket (#23) against inside corner of left caster bracket (#22), making sure mounting holes in both brackets are aligned. Place one 5/16 x 3/4" hex bolt (#29) with lockwasher (#7) and flatwasher (#28) inside top mounting hole, then attach to corresponding hole in blower housing. Repeat for other two mounting holes, leaving all bolts finger tight. Insert caster bushing (#25) into caster wheel (#24), then install wheel between brackets with 1/2 x 3-1/4" hex bolt (#26). Set wheel camber at this time, adjusting caster brackets until wheel sits perpendicular to ground, and machine travels in a straight line. Tighten the two accessible mounting bolts, then remove wheel and tighten third bolt. Replace wheel\* and axle bolt, and fasten with 1/2" locknut (#27), tightening just enough to allow wheel to spin freely, but with a minimum of play within brackets.  
\* It is advisable to grease wheel before operation to reduce roller bearing wear.

Assembly of your Giant-Vac Chip-N-Blow is now complete. Please read carefully the following instructions for safe and effective use of your Chip-N-Blow.

## SAFETY AND OPERATING INSTRUCTIONS

### TRAINING:

1. Regard your Giant-Vac Chip-N-Blow as a piece of power equipment and teach this regard to all who will operate this unit.
2. Read carefully all instruction and operation manuals supplied with your unit.
3. **Never** allow children or young teenagers to operate the Chip-N-Blow.
4. Be sure you know how to stop the engine at a **MOMENT'S NOTICE**.
5. Instruct children to keep away from the area of operation **at all times**.

### PREPARATION:

1. Before starting operation, clear the entire work area of all debris that could catch on or be thrown by the Chip-N-Blow.
2. Unless there is very good artificial light, use **only** during daylight.
3. Fill gasoline driven machines outdoors. Avoid spilling gasoline and **DO NOT** fill the engine while it is running or while you are smoking.

### ! SAFETY FIRST !

- **NEVER INSERT ANY BODY PART IN ANY OPENING WHILE THE MACHINE IS RUNNING.**
- Always wear appropriate safety equipment when operating this unit. Do not operate without proper eye, ear, breathing and hand protection.
- Do not operate with any guards or component parts removed from unit.
- Before making any adjustments or repairs, **stop engine** and remove spark plug wire.
- While in operation, keep **all** parts of body away from intake and exhaust sections.
- When operating machine, keep people and pets a safe distance away.

## STARTING THE ENGINE:

**Important note:** You have received a complete engine manual with your machine. Read this manual carefully before operating the unit. Especially note the instructions on **OILING**. ALL MACHINES ARE SHIPPED WITHOUT OIL OR GASOLINE UNLESS OTHERWISE NOTED. If you have any difficulties with the engine, check the Yellow Pages of your phone book for the engine dealer nearest you, rather than us, as the engines are under their own manufacturer's warranty.

1. Before starting, be certain to check the engine's **OIL AND GASOLINE**. (See engine manufacturer's Service Manual.) **NEVER** check the engine while it is running or while you are smoking. Check **ONLY** when engine is cold.
2. Before starting the engine, be certain to **completely** assemble the unit. With your right hand, set the throttle control to the "on" position. (When the engine is cold, you might have to initially choke the engine.) Note: on **8-B-A-C-I/P** units, make sure the red switch on the engine casing is switched to the 'on' position. Next, with your left hand, pull the recoil starter rope slowly until you feel compression, then pull fast and steady. Do **not** let the recoil starter rope snap back by itself. This may damage the rope or recoil starter assembly. After the engine starts, move the throttle lever down to approximately halfway.
3. To stop engine, slide throttle lever all the way to 'off' position. **Note:** If this fails to stop engine, engage choke to stop engine, then adjust throttle cable. To do this, loosen cable holding screw on throttle lever, then slide throttle lever toward 'on' position on handle approximately 1/4". Retighten cable screw. Repeat as necessary.

## BLOWER OPERATION:

**CAUTION:** Do not pass by or stand on the air discharge side of any leaf blower with the engine running.

1. To blow debris out toward the front of the machine, open the forward air deflector door, mounted on the front of the discharge end of the blower, by pushing the control lever to the front of the machine. This feature is ideal for such things as blowing debris from a wall or fence. Adjust engine speed to increase or decrease air discharge rate. **NEVER INSERT ANY BODY PART OR OTHER FOREIGN OBJECT IN THE OPENING WHILE THE MACHINE IS RUNNING.**
2. To blow debris out toward the side of the machine, close the front air deflector door by pulling the control lever back toward the rear of the machine, and adjust the side air deflector, mounted on the discharge end of the blower, by means of the 5/16 x 5/8" hex bolts on either end of the deflector. This will permit you to direct the air at the angle you desire for a specific application. Adjust engine speed to increase or decrease air discharge rate. By changing the deflector angle and the engine speed, you can move debris into a neat row easily and rapidly. **NEVER INSERT ANY BODY PART OR OTHER FOREIGN OBJECT IN THIS OPENING WHILE THE MACHINE IS RUNNING.**

3. For operator ease and maneuverability, push down on the upper handle while walking so that the machine balances on the rear wheels.

### CHIPPER OPERATION:

**CAUTION: Regard the chipper feature of this unit as a dangerous instrument. Failure to wear proper safety equipment, or practice safe operation, can result in serious injury.**

1. Attach debris bag to discharge end of unit, pulling bag past side air deflector and bag mounting bracket, and secure tightly with cord. **NOTE: DO NOT OPERATE THE CHIPPER UNLESS THE DEBRIS BAG IS IN PLACE.** Because of the high discharge velocity, debris can become dangerous flying projectiles, causing serious injury.
2. Be sure the front air deflector is in the closed position, directing debris out through the side of the unit and into the debris bag.
3. It is best to gather up all the debris you desire to chip into a pile before operating the unit, to avoid leaving the unit unattended.
4. Start engine and set throttle at approximately 3/4 full. Remove chipper chute push bar, and begin slowly feeding debris into the chipper chute. **CAUTION: DO NOT PLACE HANDS OR FINGERS INTO THE CHIPPER CHUTE.** Use the push bar to feed lengths of debris shorter than the chute into the chipper blade.
5. This unit is designed to accept clippings and debris from trees and shrubs. **DO NOT ATTEMPT TO FEED ANY OTHER TYPE OF MATERIAL INTO THE UNIT, ESPECIALLY METAL.** DOING SO CAN CAUSE EXTENSIVE DAMAGE TO THE UNIT, AS WELL AS SERIOUS PERSONAL INJURY.
6. This machine is designed to handle debris up to 2" in diameter. **DO NOT ATTEMPT TO FEED LARGER MATERIAL INTO THE MACHINE.** It can become jammed in the chipper chute.
7. Before shutting the unit down, be sure to clear the chipper chute of any debris by pushing the chipper chute push bar fully into the chute. Also, allow the chipper to run a minute or two after the last debris has been inserted, to allow the chipper to clear itself out.

### MAINTENANCE AND STORAGE

#### CHIPPER BLADE SHARPENING/REPLACEMENT:

As with all cutting surfaces, the chipper blade on your Chip-N-Blow can eventually become dull. This blade can be removed for sharpening. Also, incorporated into the design of the Chip-N-Blow is a

replacement chipper blade that doubles as a shear plate for the chipper. These two blades can be interchanged as needed. Either of these procedures can be performed as follows:

1. Remove the spark plug wire to prevent inadvertant starting of unit while maintenance is being performed.
2. Remove the impeller housing from the unit (by means of the 5/16 x 3/4" bolts, lockwashers, and nuts securing housing to the rear housing plate), exposing the impeller.
3. Remove the impeller from the engine shaft by first removing the bolt and washers securing the impeller to the shaft, then sliding the impeller off the shaft. This may require the use of a prybar placed between the rear of the impeller and the rear housing plate and applying a generous amount of pressure. (Soaking the shaft with a liberal amount of penetrating oil beforehand can greatly reduce the amount of force needed to free the impeller.) If the impeller still cannot be removed, an impeller puller may be required (Giant-Vac model 5811-P; part # 31599).
4. To sharpen the blade, remove the nuts, washers, and bolts securing the chipper blade to the impeller. Grind the cutting surface lightly and evenly at a **40 degree angle** until sharp. Reinstall the blade onto the impeller, making sure the entire cutting surface extends just beyond the edge of the chip relief slot in the impeller. (Failure to do this may result in debris being caught in the impeller.)
5. To interchange blades, remove the blades from both the impeller and the rear housing plate, **making careful note as to how they are attached.** (Especially note that the cutting surface of the shear plate/replacement blade faces down toward the ground, with the flat edge facing up toward the chipper chute.) Also, be sure to note the number and location of the blade shims that may have been used, as these serve to adjust the cutting gap tolerance crucial to effective chipper operation. Swap the blades, installing each exactly the way the other was removed. **NOTE: INCORRECT INSTALLATION OF EITHER OF THE BLADES CAN RESULT IN SERIOUS DAMAGE TO THE UNIT, AS WELL AS SERIOUS PERSONAL INJURY.**
6. Reinstall the impeller onto the engine shaft, securing with bolt and washers.
7. Check the cutting gap tolerance by positioning the cutting blade on the impeller directly over the shear plate/replacement blade and measuring the gap between the two with a feeler guage. **Correct gap width is .040-.050.** If adjustment is needed, it can be achieved by either removing or adding shims between the shear plate/replacement blade and the rear housing plate (additional shims can be obtained through your Giant-Vac dealer - see parts list for part numbers) and/or by loosening the engine mounting bolts and sliding the engine forward or backward until required gap is achieved. Retighten mounting bolts, as well as making sure all other bolts that have been removed have been reinstalled and tightened securely. Further check blade clearance by removing the spark plug wire, pulling the recoil rope, and listening, as the impeller rotates, for any sound that may indicate contact between the blade and the shear plate. **(IMPORTANT NOTE: Be sure to wear safety eyewear when performing this step - tempered steel blades can shatter if they contact each**

**other at any speed.)** If no contact is detected, replace the impeller housing with all corresponding hardware.

#### MISCELLANEOUS MAINTENANCE:

1. Follow **implicitly** the engine manufacturer's recommendations for maintenance.
2. Never adjust the Chip-N-Blow or change any attachments until the engine is **off** and the spark plug wire is disconnected.
3. If carburetor adjustment is necessary, stand to one side and **keep feet and hands** in the clear while making adjustments.
4. Keep engine free of accumulations of grass, leaves or excessive grease. An accumulation of these combustible materials may result in a fire.

#### STORAGE:

1. Store gasoline in a **safe and approved** container in a cool dry place.
2. Keep the Chip-N-Blow and fuel container in locked storage to prevent children from playing and/or tampering with them.
3. Do not store gasoline powered equipment or fuel containers in a basement or any closed area where heating or heat appliances or open pilot lights are present, unless the fuel is completely drained from the power equipment and the fuel containers.

#### OPTIONAL ATTACHMENTS

Optional attachments, such as intake and discharge hose kits, are available through your local Giant-Vac dealer.

#### REPLACEMENT PARTS

Replacement parts are available through your local Giant-Vac dealer.

## GIANT-VAC WARRANTY

GIANT-VAC MFG. INCORPORATED, here-in-after called Giant-Vac, warrants each new Giant-Vac to the original, retail purchaser of the new Giant-Vac equipment, to be free from manufacturing defects in normal service for a period of one (1) year, unless it is used for rental purposes, which limits the warranty to 30 days. This warranty does not apply to engines, tires or other parts that are purchased and warranted by their manufacturer. Items such as bags, grass catchers, hoses and blades are not warranted, as these are considered expendable items. This warranty does not include equipment failures due to normal wear.

Any obligation under this warranty is expressly limited to the replacement or repair, at an authorized servicing Giant-Vac dealer, or at a point designated by us, of such parts as appear to us to have been defective. All defective parts have to be returned freight prepaid before credit will be issued.

We shall not be liable for transportation charges in connection with the replacement or repair of defective parts.

This warranty does not apply to a Giant-Vac upon which repairs or alterations have been made by others except with our prior written approval.

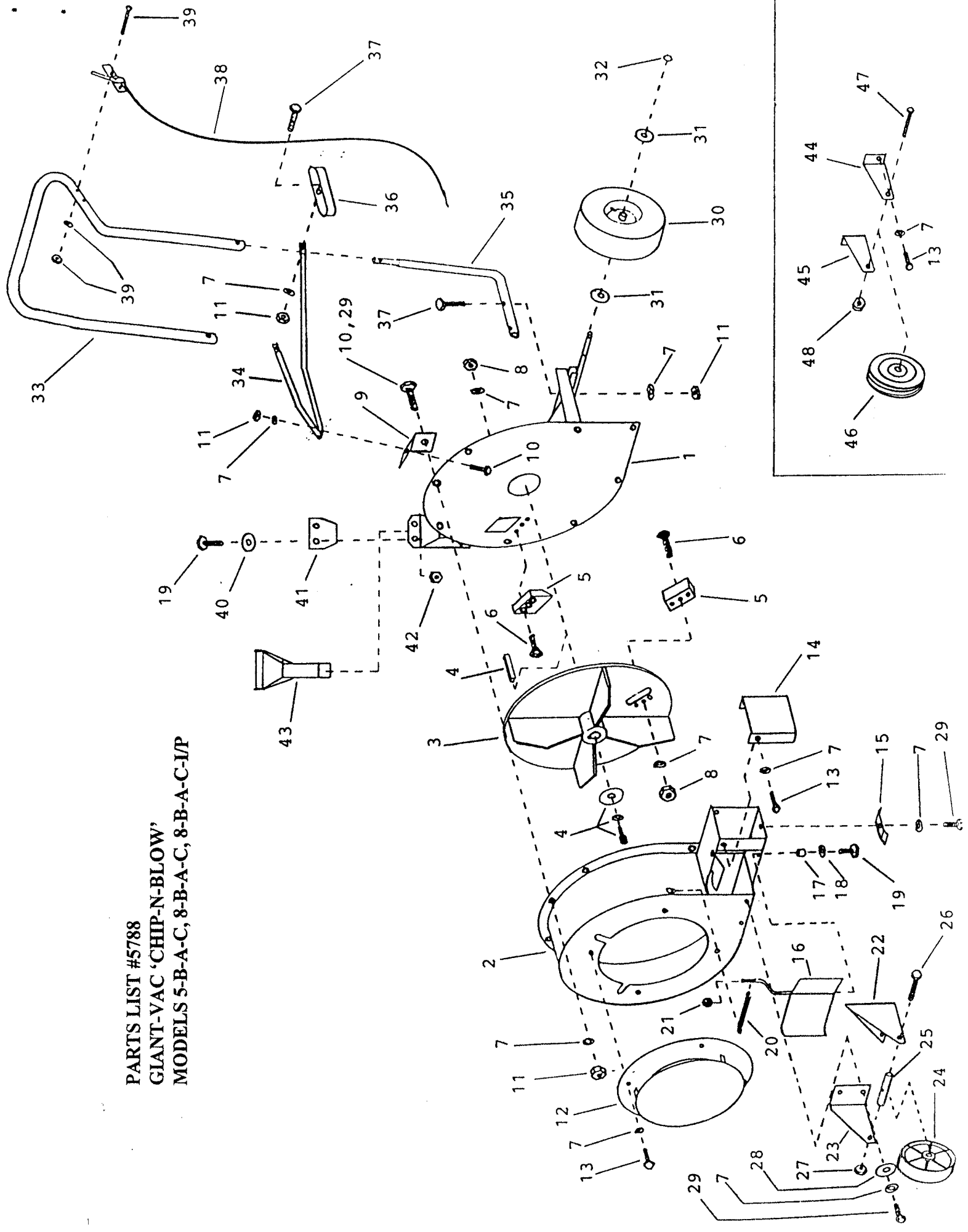
We shall not be liable for consequential damages or contingent liabilities for the fitness of any Giant-Vac for any particular purpose.

We make no other express, implied or statutory warranty, nor is anyone authorized to make any in our behalf.

GIANT-VAC MFG. INCORPORATED  
P.O. BOX 195  
SOUTH WINDHAM, CT. 06266  
PHONE: 860-423-7741  
FAX: 860-423-2654



**PARTS LIST #5788  
GIANT-VAC 'CHIP-N-BLOW'  
MODELS 5-B-A-C, 8-B-A-C, 8-B-A-C-1/P**



PARTS LIST NO. 5788

<u>REF</u> <u>NO.</u>	<u>PART</u> <u>NO.</u>	<u>DESCRIPTION</u>	<u>5-B-A-C</u>	<u>8-B-A-C</u>	<u>8-B-A-C</u> <u>I/P</u>
1	10152	Engine base & chipper chute ass'y	1		
1	10154	Engine base & chipper chute ass'y		1	1
2	10153	Blower housing	1		
2	10155	Blower housing		1	1
3	21561	Impeller	1		
3	21562	Impeller		1	1
4	31019	Impeller bolt & key group	1		
4	31020	Impeller bolt & key group		1	1
5	21565	Chipper blade	2	2	2
6	31648	5/16 x 1" flat head hex socket screw	6	6	6
7	31003	5/16" lock washer	29	30	30
8	31436	5/16 lock nut	6	6	6
9	23201	Handle brace support bracket	1		
9	23202	Handle brace support bracket		1	1
10	31032	5/16 x 1" hex bolt	2	2	2
11	31004	5/16" hex nut	14	14	14
12	20101	Intake baffle	1	1	1
13	31016	5/16 x 5/8" hex bolt	8	6	6
14	24500	Side air deflector	1	1	1
15	24611	Discharge bag support bracket	1	1	1
16	24501	Forward air deflector	1	1	1
17	31014	Bushing	1	1	1
18	31013	1/4" lockwasher	1	1	1
19	31635	1/4 x 5/8" hex bolt	5	5	5
20	24502	Spring	1	1	1
21	31103	Control lever knob - 3/8"	1	1	1
22	33157	Caster bracket - left side		1	1
23	33159	Caster bracket - right side		1	1
24	33156	6" x 2" Caster wheel		1	1
25	33158	Caster wheel bushing		1	1
26	31650	1/2 x 3-1/4 hex bolt		1	1
27	31406	1/2 lock nut		1	1
28	31027	5/16 flatwasher		3	3
29	31400	5/16 x 3/4" hex bolt	8	11	11
30	33001	410-350 x 4 pneumatic tire assembly	2	2	2
30a	33107	Bearing for pneumatic tire assembly	4	4	4
31	31001	5/8" flat washer (special)	4	4	4
32	31000	5/8 snap ring	2	2	2
33	23000	Upper handle	1	1	1
33a	31590	Foam handle cover	1	1	1

<u>REF</u> <u>NO.</u>	<u>PART</u> <u>NO.</u>	<u>DESCRIPTION</u>	<u>5-B-A-C</u>	<u>8-B-A-C</u>	<u>8-B-A-C</u> <u>I/P</u>
34	23003	Handle brace	1		
34	23003-A	Handle brace		1	1
35	23002	Lower handle	2	2	2
36	27269	Pruning shears bracket	1	1	1
37	31002	5/16 x 1 3/4" hex bolt	6	6	6
38	35001	Throttle control	1	1	1
38a	31007	Throttle cable clip	2	2	2
39	31010	10-24 x 1 1/4" bolt, lock washer and nut	2	2	2
40	31317	1/4 flatwasher	4	4	4
41	20207	Chipper chute safety flap	2	2	2
42	31098	1/4 lock nut	4	4	4
43	20208	Chipper chute push bar	1	1	1
44	33102	Left side rub plate	1		
45	33101	Right side rub plate	1		
46	33017	6"x 1.50 caster wheel	1		
47	31649	3/8 x 2-1/4" hex bolt	1		
48	31560	3/8" lock nut	1		

ITEMS NOT SHOWN

39001	5HP B&S engine	1			
39064	8HP B&S engine			1	
39066	8HP B&S I/P engine				1
31006	5/16 x 1-1/2 hex bolt (motor mount hardware)	4			
31002	5/16 x 1-3/4 hex bolt (motor mount hardware)			4	4
31003	5/16 lockwasher	4		4	4
31004	5/16 hex nut	4		4	4
33003	Complete caster assembly	1			
33160	Caster wheel seal			2	2
33161	Caster wheer roller bearing			1	1
33155	Complete caster assembly			1	1
816	Discharge bag	1		1	1
27277	Chipper blade shim - 1/16"				SUBJECT TO VARIATION
27278	Chipper blade shim - 3/32"				SUBJECT TO VARIATION
27279	Chipper blade shim - 1/4"				SUBJECT TO VARIATION

ALL SPECIFICATIONS SUBJECT TO CHANGE WITHOUT NOTICE.