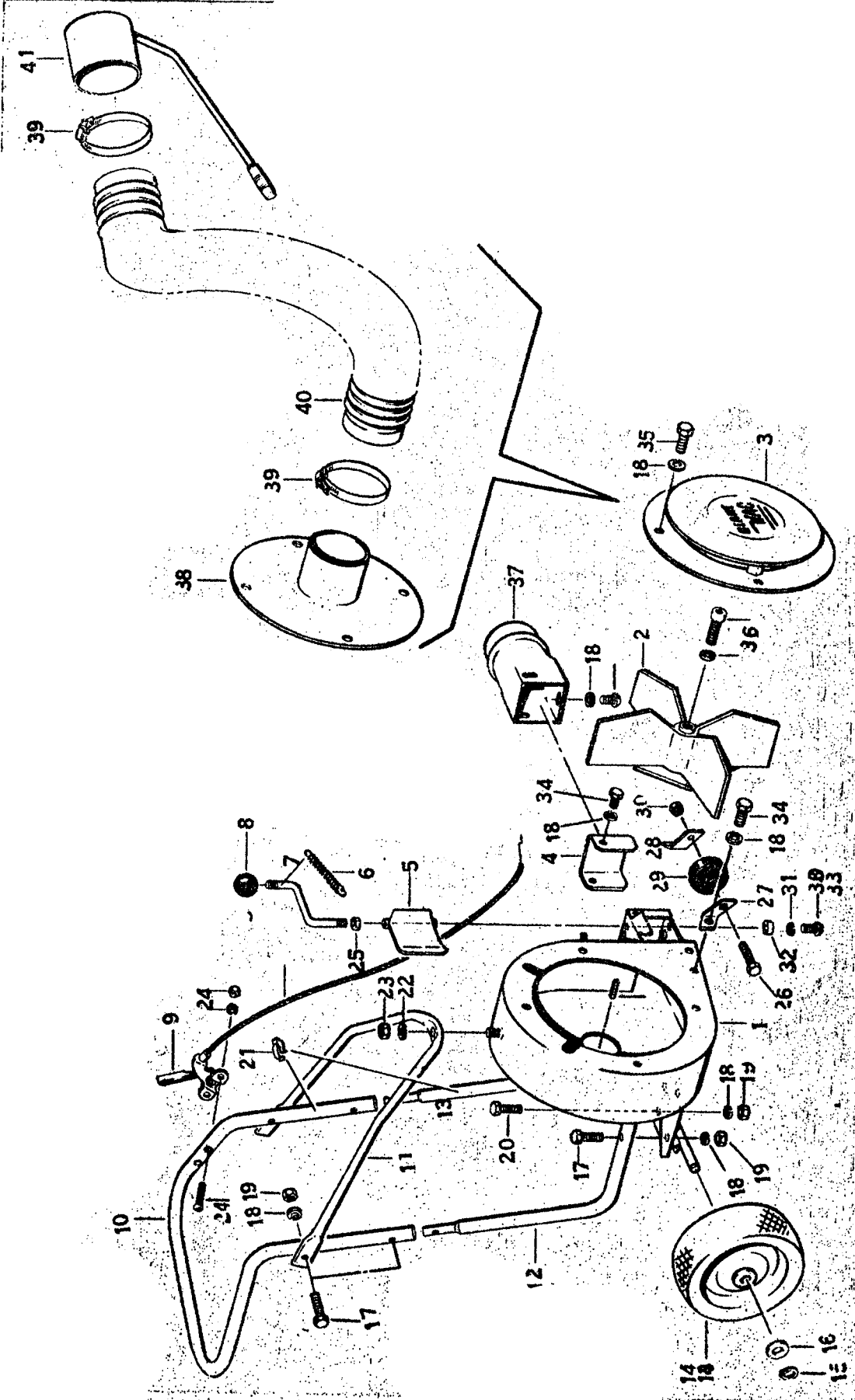


REF. NO.	PART NO.	DESCRIPTION	#4 B&S	#4 KOH	#6 B&S	#7-8 KOH	#7-8 WISC
1	10016	Engine and Blower Base	1	1			
1A	10017	Engine and BCover Base			1		
1B	10018	Engine and Blower Base				1	1
2	21501	Impeller 1" Shaft	1	1			
2A	21502	Impeller			1		
2B	21503	Impeller				1	
2C	21504	Impeller					1
2D	21505	Impeller 3/4" Shaft	1	1			
3	20101	Front Baffle Plate	1	1	1	1	1
4	24500	Side Air Deflector Plate	1	1	1	1	1
5	24501	Forward Air Deflector	1	1	1	1	1
6	24502	Spring for Control Lever	1	1	1	1	1
7	23026	Control Lever	1	1	1	1	1
8	31103	Control Lever Knob	1	1	1	1	1
9	35002	Throttle Control		1		1	1
9A	35001	Throttle Control	1		1		
10	23000	Upper Handle			1		
10A	23001	Upper Handle	1	1		1	1
11	23003	Handle Brace			1		
11A	23004	Handle Brace	1	1		1	1
12	23002	Right Side Lower Handle	1	1	1	1	1
13	23002	Left Side Lower Handle	1	1	1	1	1
14	33000	Wheel 10 x 2.50 semi-pneumatic	2	2	2		
14A	33001	Wheel 4.10 x 350 - 4 Pneu.				2	2
15	31000	Blower Wheel Snap Ring	2	2	2	2	2
16	31001	Flat Washers 5/8"	2	2	2	2	2
17	31002	5/16" x 1 3/4" Handle Bolts			6		
17A	31002	5/16" x 1 3/4" Handle Bolts	8	8		8	8
18	31003	5/16" Lockwashers	23	23		23	23
18A	31003	5/16" Lockwashers			21		
19	31004	5/16" Nuts	12	12		12	12
19A	31004	5/16" Nuts			10		
20	31006	5/16" x 1/2" Bolts	4				
20A	31005	5/16" x 1 1/4" Bolts		4		4	
20B	31002	5/16" x 1 3/4" Bolts			4		
21	31007	Throttle Clips	2	2	2	2	2
22	31008	3/8" Lockwasher	2	2	2	2	2
23	31009	3/8" Nut	2	2	2	2	2
24	31010	10-24 x 1 1/2" Bolt, Nut, and Lockwashers	2	2	2	2	2
25	31004	5/16" Nut for Control Lever	1	1	1	1	1
26	31011	1/2" x 2 1/4" Bolt*	1	1	1	1	1
27	33005	Right Side Rub Plate*	1	1	1	1	1
28	33006	Left Side Rub Plate*	1	1	1	1	1
29	33004	Castor Wheel*	1	1	1	1	1
30	31012	1/2" Jam Nut*	1	1	1	1	1
*Above parts indicate complete castor assembly - Use Part No. 33002							
29A	33003	Rub Plate with 6" Wheel	1	1	1	1	1
31	31013	1/4" Lockwasher	1	1	1	1	1
32	31014	Bushing	1	1	1	1	1
33	31015	1/2" x 1/4" Screw Cap	1	1	1	1	1
34	31016	5/16" x 5/8" Bolt	4	4	4	4	4
35	31017	5/16" x 1/2" Bolt	4	4	4	4	4

PARTS LIST NO. 5700 - Page 2

REF. NO.	PART NO.	DESCRIPTION	#4 B&S	#4 KOH	#6 B&S	#7-8 KOH	#7-8 WISC
36	31018	Impeller Bolt and Lockwasher - 5/16" x 24 - 1 1/2"	1				
36A	31019	Impeller Bolt and Lockwasher - 3/8" x 24 - 1 1/2"		1			
36B	31020	Impeller Bolt and Lockwasher 7/16" x 20 x 1 1/2"					
37	24503	#45 Exhaust Connector	1	1	1	1	1
38	20106	4" Intake Flange	1	1	1	1	1
38	20107	5" Intake Flange	1	1	1	1	1
38	20108	6" Intake Flange	1	1	1	1	1
39	34011	4" Hose Clamps	2	2	2	2	2
39	34012	5" Hose Clamps	2	2	2	2	2
39	34013	6" Hose Clamps	2	2	2	2	2
40	34002	Intake Hose 4" x 10'	1	1	1	1	1
40	34003	Intake Hose 5" x 10'	1	1	1	1	1
40	34004	Intake Hose 6" x 10'	1	1	1	1	1
41	20145	4" Intake Nozzle	1	1	1	1	1
41	20146	5" Intake Nozzle	1	1	1	1	1
41	20147	6" Intake Nozzle	1	1	1	1	1
	39005	4 HP Kohler Engine					
	39001	5 HP B&S Engine					
	39002	8 HP B&S Engine					
	39006	7 HP Kohler Engine					
	39014	7 HP Wisconsin Engine Recoil					
	39007	8 HP Kohler Engine					
	39016	8 HP Wisconsin Engine Recoil					



MODELS 4A - 6A - 7A - 8A  
GIANT-BLOS